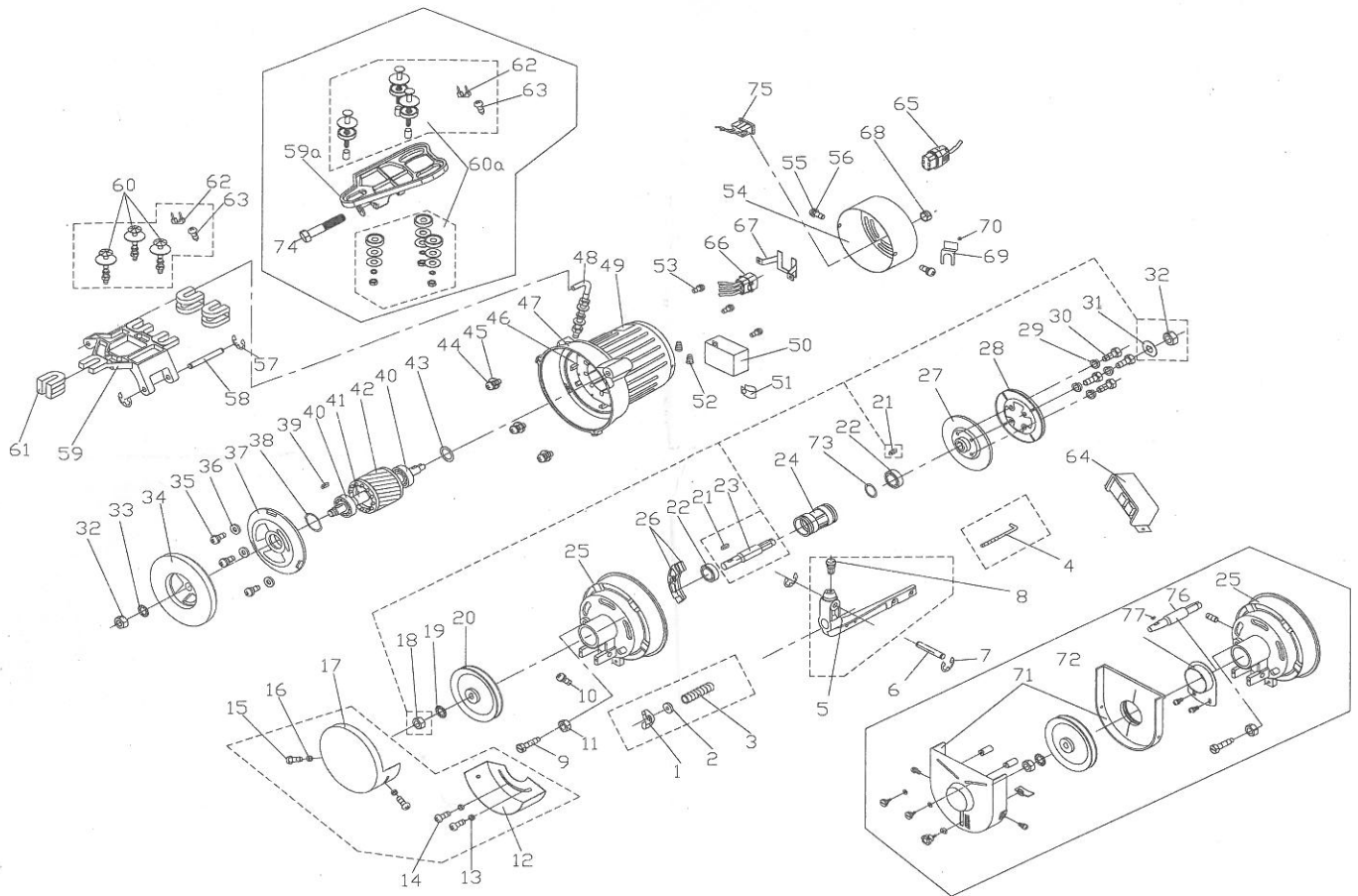


# Clutch Motor Part List



No.	Description	Qty	No.	Description	Qty	No.	Description	Qty
1	Wing nut M6	1	28	Clutch lining	1	56	Washer	1
2	Lock washer	1	29	Spring washer	4	57	E-shaped lock rings (#1)	2
3	Lever spring	1	30	Screw	4	58	Pin (#1)	1
4	Spring adjusting rod	1	31	Copper washer	1	59	Side base (#1)	1
5	Lever	1	32	Nut	2	59a	Side base (#5)	1
6	Lever pin	1	33	External washer	1	60	Mounting bolts (#1)	3
7	E-shaped lock ring	2	34	Fly wheel	1	60a	Mounting bolts (#5)	3
8	Ball joint	1	35	Screw with washer	3	61	Rubber cushion (#1)	3
9	Hexagon screw	1	36	Washer	3	62	U-Thumb pin	5
10	screw	1	37	Intermediate bracket	1	63	Screw	2
11	Nut	1	38	Preload spring	1	64	Switch box with Cable	1
12	Full belt guard (inner)	1	39	Key 5x5x16	1	65	Reverse plug (#3)	1
13	Plane Washer	2	40	Bearing #6203	2	66	Reverse socket (#3)	1
14	Screw with washer	2	41	Rotor shaft	1	67	Reverse fixture (#3)	1
15	Screw with washer	1	42	Rotor	1	68	Rubber Seal	1
16	Washer	1	43	Cushion plate	1	69	Cable fixture (#3)	1
17	Full belt guard(outer)	1	44	Screw with washer(45)	3	70	Rubber Seal (#3)	1
18	Nut	1	45	Stator	1	71	Full belt guard (#2)	1
19	Spring washer	1	47	Motor housing	1	72	Full belt guard(inner) bush (#2)	1
20	Pulley	1	48	Adjustment blots	1	73	Cushion plate	1
21	Key 5x5x16	2	49	Name plate	1	74	Screw (#5)	1
22	Bearing #6202	2	50	Capacitor	1	75	Voltage Convertor (#4)	1
23	Clutch shaft	1	51	Capacitor saddle	1	76	Taper shaft	1
24	Bearing pipe	1	52	Wire connector	2	77	Key 4x5xR6.5	1
25	Front cover	1	53	Screw with Spring washer	4			
26	Brake shoe	1	54	End cover	1			
27	Clutch wheel	1	55	Screw	1			

#1 for standard type.

#2 for CE Marking.

#3 for Reverse .

#4 for 110/220V or 220/380V.

#5.for Italy & Holland.