

User Manual and Spare Parts Book



GZ-5527 series

ANITA B s.r.o.

Průmyslová 2453/7

680 01 Boskovice

Czech Republic

tel: +420 515 553 628

+420 515 553 629

fax: +420 516 452 751

e-mail: info@anita.cz

VERSION	CREATED ON	APPROVED BY
MP02700EN_181031	31. 10. 2018	Jakub Lžičař
MP02700EN_200408	08. 04. 2020	Ing. Kamil Krátký
MP02700EN_220923	23. 09. 2022	Jiří Opluštil

All rights reserved.

Property of Anita B s.r.o. and protected by copyright. The use of this content without written consent of Anita B s.r.o. is prohibited.

Copyright © Anita B s.r.o. (2020)

Content

A	BASIC INFORMATION	4
B	SAFETY INSTRUCTION	5
	B1. GENERAL INSTRUCTION	5
	B2. INSTALLATION PREPARATION	5
	B3. OPERATIONAL SAFETY INSTRUCTION	6
	B4. WORKING SAFETY INSTRUCTIONS	6
	B5. DISPOSAL INSTRUCTIONS.....	7
C	MACHINE SETUP	8
	C1. INSTALL BELT	8
	C2. INSTALL BELT COVER.....	8
	C3. THE NEEDLE BAR STOP POSITION ADJUSTMENT	8
D	MACHINE CONTROL	9
	D1. NEEDLE THREADING.....	9
	D2. WIND THE BOBBIN	10
	D3. BOBBIN FIXING AND HOOK THREADING	11
	D4. THREAD TENSION ADJUSTMENT	12
	D5. NEEDLE REPLACEMENT.....	14
	D6. FOOT LIFTING	15
	D7. FOOT PRESSURE SETTING	16
	D8. STITCH LENGTH SETTING	16
	D9. BACKTACKING (REVERSE FEED, CLOSING UP).....	17
	D10. SETTING OF ZIG-ZAG STITCH WIDTH (THROW) AND POSITION	18
	D11. AUTOMATIC MACHINE CONTROL.....	19
	D12. KEY CONTROL PANEL	20
E	MACHINE MAINTENANCE	21
	E1. CLEANING AND CHECKING	21
	E2. LUBRICATION.....	22
F	SPARE PARTS BOOK	23

A BASIC INFORMATION

Flatbed machine series with drop feed for ZIG ZAG stitching. Sturdy design of the machine is suitable for using in production of shoe uppers, further in manufacture of fancy goods and upholstery. Advantage of this machine is that needle penetrates the material in perpendicular position, which decreases the risk of needle breakage. Machine is adapted for stitching with both cotton and synthetic threads. The maximum sewing speed is up to 3500 SPM.

Model	GZ-5527-143 LM	GZ-5527-147 LM	GZ-5527-443 MH	GZ-5527-447 MH
Number of needles	1			
Needle gauge	-			
Use	Light and medium materials		Medium and heavy materials	
Stitch type	Double thread zig-zag lockstitch			
Max. stitch length	5 mm			
Stitch width	6 mm		10 mm	
Hand lever foot lift	5 mm		5 (7*) mm	
Knee lever foot lift	7 mm		7 (12*) mm	
Needle system	134		134 nebo 135x17	
Needle size	Nm. 80 -110		Nm. 100-130	
Hook type and size	Rotary, size S (21 mm bobbin diameter) horizontally situated		Rotary, size S (27 mm bobbin diameter) horizontally situated	
Lubrication	Semi-automatic			
Lubrication oil	10# M22			
Motor	AC Servo 1 x 230 V			
Machine head weight	43 kg			
Table weight	25 kg			
Working place	260 x 115 mm			
Machine table dimensions	470 x 180 mm			
Power	600 W	750 W	600 W	750W
Ground plan dimensions (including frame)	1070 x 550 mm			
Bedplate height	740 – 840 mm			
Machine height including thread stand	1500 – 1600 mm			
Noise level by 50% machine utilization and under standard conditions	73 dB / A			
Maximal sewing speed	3500 stitches/minute		3200 stitches/minute	

*with needle 135x17

B SAFETY INSTRUCTION

Read the instructions carefully before installation and use. Keep this manual for future reference.

B1. GENERAL INSTRUCTION

1. Do not operate the sewing machine until proper preparation has been made by a technician or qualified person and safety precautions have been taken.
2. Always follow the safety instructions when handling the machine.
3. This sewing machine may only be operated by properly trained personnel.
4. Maintenance, repair, inspection and adjustment of the machine may only be carried out by a qualified person.
5. Work on electrical equipment may only be performed by a qualified worker or person with the appropriate authorization. Work on electric parts and equipment on your own is not permitted.
6. The machine may only be used for its intended purpose.
7. The warranty does not cover any problems in the operation of the machine that are caused by unauthorized modifications to the machine, as well as problems caused by non-observance of the instructions given in this manual and generally known habits for the operation and maintenance of industrial sewing machines.
8. Warnings are indicated by the following symbols:



B2. INSTALLATION PREPARATION

1. Immediately report visible damage to the carrier. Check the contents of the order shipment and report any defects immediately to the manufacturer. Later claims will not be accepted.
2. Use the machine after checking that it meets all the safety standards of your country.
3. The machine head is covered with a corrosion-proof coating. Wipe off the lubrication and dust layer with a cloth or petrol before placing it on the work surface.
4. The machine has been thoroughly inspected and tested before shipment. However, it may have been damaged by transport or impact. Check the operation of the machine with the hand wheel, to detect extraordinary noises, heavy running, etc. before starting the test sewing.
5. Never start the machine if the oil level is under or over the marked lines.
6. Check that the power and phase are in accordance with the label instructions.
7. Proper grounding of the machine is necessary.
8. Use the correct grounding plug.
9. Do not use an extension cord.
10. Make sure that the power supply and voltage match the requirements on the label of the machine.
11. Do not use the machine in explosive or corrosive environment.
12. In the first two weeks, do not exceed 3/4 of the maximum machine speed.

B3. OPERATIONAL SAFETY INSTRUCTION

1. Do not use the machine without a belt cover, finger guards or other protective equipment.
2. All protective equipment of the machine must be in place before operation. Do not use the machine without covers and protective equipment.
3. Repairs damaged covers or replace them immediately.
4. If the safety label is damaged, order a new one from the machine supplier and place it in its original position.
5. Switch off the machine and unplug it in these situations (the motor still rotates after turning off; wait until it stops completely):
 - when threading the needle (needles), hooks, etc.
 - when changing the needle, presser foot, needle plate, hooks, hook bobbins, feeders, needle guards, finger guards, work guides, etc.
 - when the machine is not in use and left unattended
 - when opening or removing the protective covers
 - for any maintenance, repair, inspection and adjustment of the machine
 - when cleaning the machine
6. Wear safety goggles and gloves when lubricating the machine. Do not drink oil under any circumstances, as it may cause vomiting and diarrhea. Keep oil out of the reach of children.
7. Take special care when lifting/tilting the machine head. When tilting the machine head, make sure the machine is turned off. Always hold the machine head with both hands.
8. When handling cords and plugs, check if the machine is switched off to avoid electrical shock and injury.
9. Check the electrical cords for damage to avoid injury by touching the exposed wire.
10. Do not place any objects on the power cord.
11. Do not open or touch the inside of the junction box.
12. It is strictly forbidden to connect any connector while the machine is powered. Risk of damage to electrical components and drives.
13. Do not modify the machine in any way that could endanger safety.
14. Clean the machine regularly during operation.
15. Do not wipe the machine with thinner or acetone.
16. Use only original or approved spare parts from manufacturer.
17. Ensure adequate illumination of the work area and the surroundings of the machine.

B4. WORKING SAFETY INSTRUCTIONS

1. Make sure you know the position of Stop button before starting to work.
2. Do not touch any moving parts or put objects into the machine while sewing.
3. Be careful not to catch or place objects near the machine's moving mechanisms, particularly fingers, sleeves, clothing and hair.
4. Never touch the needle when the machine is turned on and sewing.
5. Never reach under the thread lever cover while the machine is on.
6. Do not place your fingers in the needle guard holder when feeding material manually.
7. Do not work on the machine under the influence of alcohol or drugs.
8. We recommend wearing safety goggles.
9. Do not remove covers or any other safety device while the machine is running.
10. Always turn off the main switch when leaving the machine.

B5. DISPOSAL INSTRUCTIONS

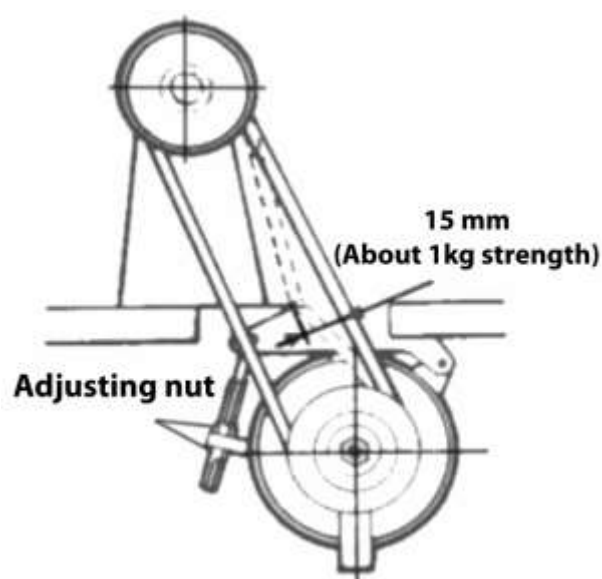
For disposal of the machine contact your local dealer or manufacturer in accordance with legislation.

C MACHINE SETUP

C1. INSTALL BELT

Use V-belt which special for sewing machine.

To adjust the tension of belt. Change the height of motor through turn the tension adjusting nut. It is ok if the belt sinks inside with 15mm when pressing the center position of belt surface. Lacking tension will cause unstable running speed of machine, or needle stand at wrong stop position when machine in middle / slow running condition. Excessive tension will cause the motor bearing be damaged.



C2. INSTALL BELT COVER

Machine head and motor must install belt cover for safety.

C3. THE NEEDLE BAR STOP POSITION ADJUSTMENT

If the localizer adopts external hanging type, please refer to the motor instruction book for the adjustment method

„Up“ Position

When the pedal is kicked down by heel, the machine should stop at “Up” position, i.e. the highest position of take-up lever.

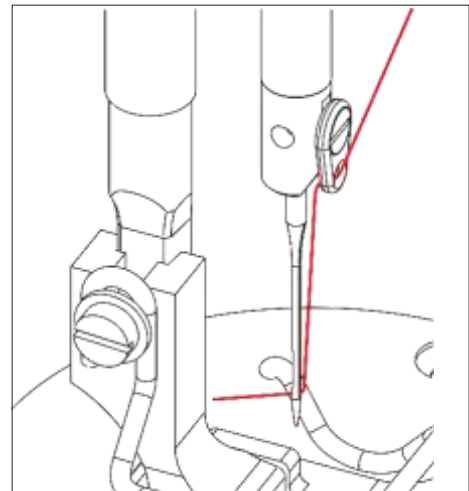
„Down“ Position

When the pedal is stand at middle position, the machine should stop at “Down” position, i.e. the needle bar raises 3mm from its lowest position.

D MACHINE CONTROL

D1. NEEDLE THREADING

Do the threading according to pictures.



D2. WIND THE BOBBIN

Fix the bobbin ① on the winder.

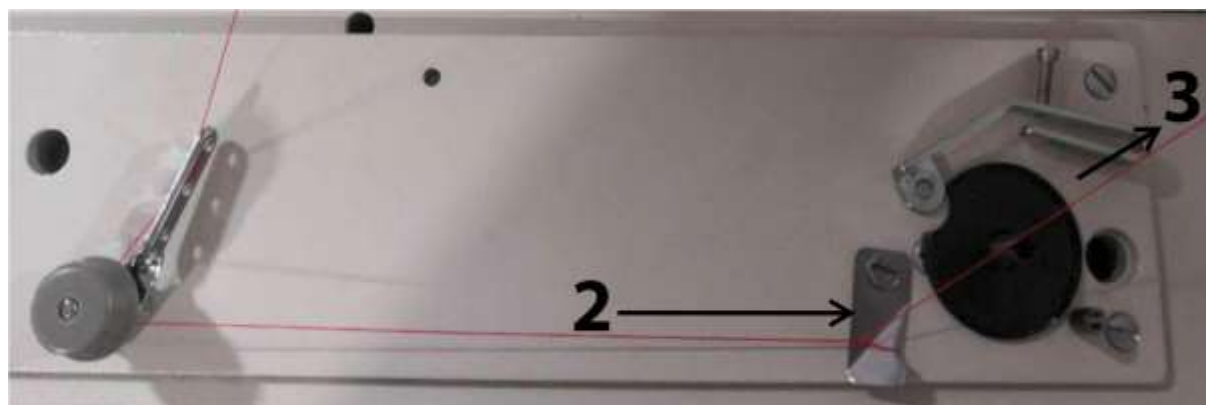
Do the threading according to the first below picture, wind 5 times round the bobbin.

Pull the lever ④ in the arrow direction ⑤.

Start the machine up.

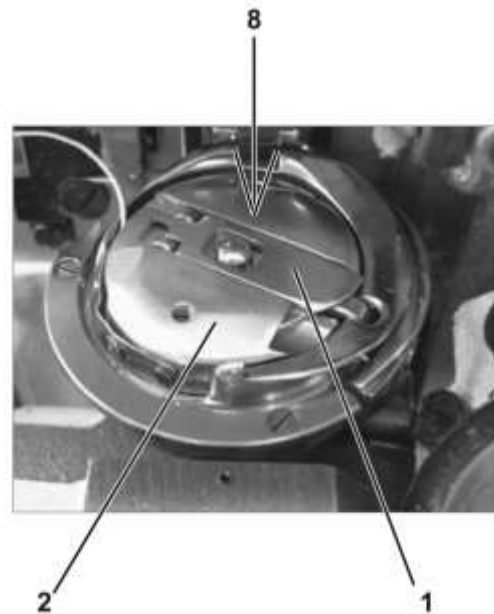
After the bobbin winding, wind the thread round the cutter ② according to second below picture and tear it off by pulling in the arrow direction ③.

Fix another bobbin immediately and prepare its winding during the sewing.

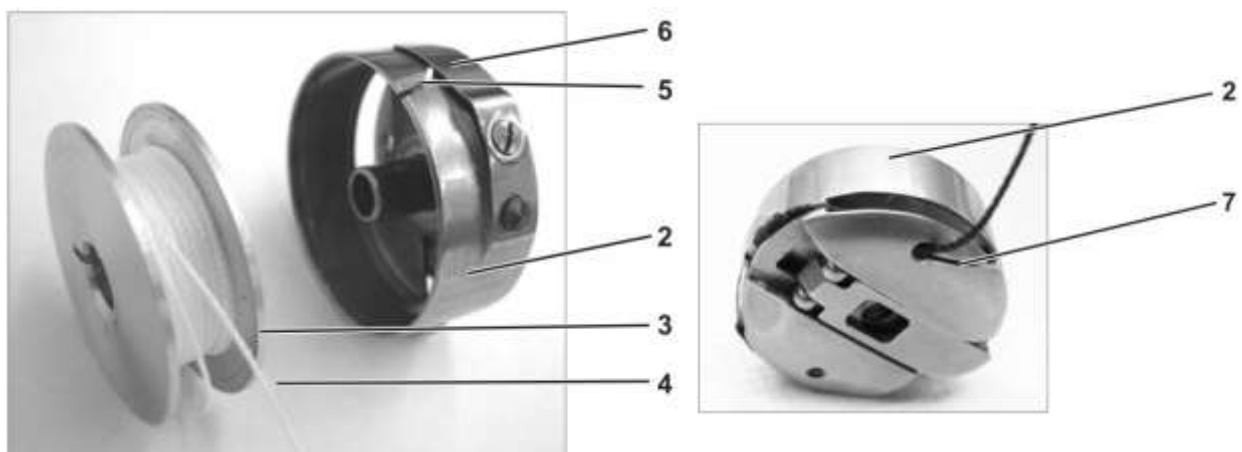


D3. BOBBIN FIXING AND HOOK THREADING

Tilt the flap ①, grip it and pull the bobbin case ② out of the hook.



Put the bobbin ③ in the bobbin case with the thread end ④ oriented according to the picture ②. Draw the thread end ④ through the slit ⑤, pull under the spring ⑥ and pull into the slit ⑦. Insert the case ② back in the hook and press it down in the arrow direction ⑧ till the lock inside the case clicks and secures it against falling out. Make one stitch without the sewn material, and drawing the thread upper end, pull the hook thread end outwards above the throat plate.



D4. THREAD TENSION ADJUSTMENT

A. Needle thread tension adjustment

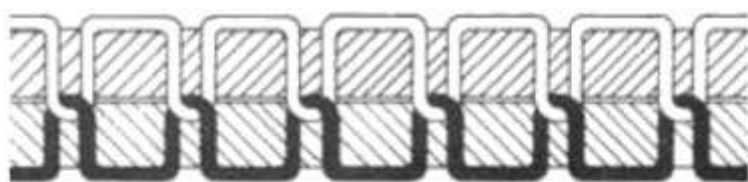


Secondary tensioner adjustment ①:

Adjust the secondary tensioner ① so that it has as small tension as possible, but high enough so as the thread cannot be pulled out from the tensioner ① at the material removing after previous trimming (when the tensioner ② is opened - switched off). (The tensioner ① is never switched off).

Main tensioner adjustment ②:

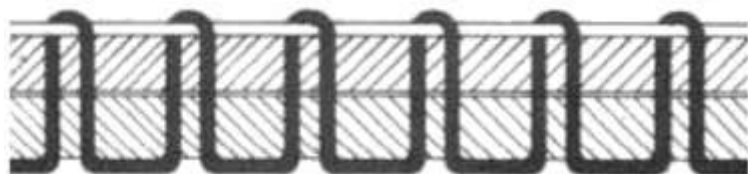
Regulate the thread tension with the tensioner ② until you achieve a good interlacing of the threads (see below).



Correct interlacing of threads in the center of the material



Increase of the needle thread tension (or reduce the hook needle tension)



Reduce the needle thread tension (or increase the hook thread tension)

B. Hook thread tension adjustment

The hook thread tension depends on the adjustment of springs ① and ②.

Tension spring ① adjustment

Remove the bobbin case ③ from the machine and insert a full-wound bobbin ④. Do a complete threading according to picture ⑤. Regulate the spring ① pressure with a screw ⑤ so that the thread tension is in balance with the case and bobbin weight - when hung down on the thread end ⑥, the case is dropping slowly with its own weight.

Adjustment of the spring ② breaking the bobbin during thread trimming

Bobbin braking should be as small as possible because it causes difference of tensions of full and empty bobbin and subsequently of thread interlacing in the stitch (defective look of the seam). Regulate the bobbin braking with a screw ⑦ and watch the bobbin unwinding after the thread trimming: remove the case ③ from the machine, grip it so that the bobbin cannot turn and pull out the thread end ⑧. At a correct adjustment, approx. 10 mm of thread will be pulled out of the case.



A



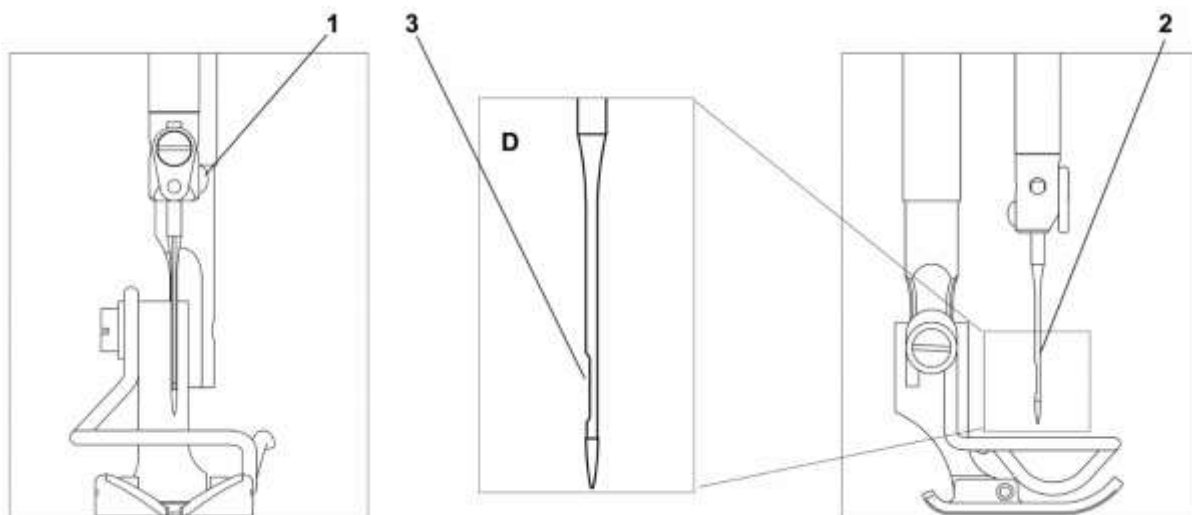
B



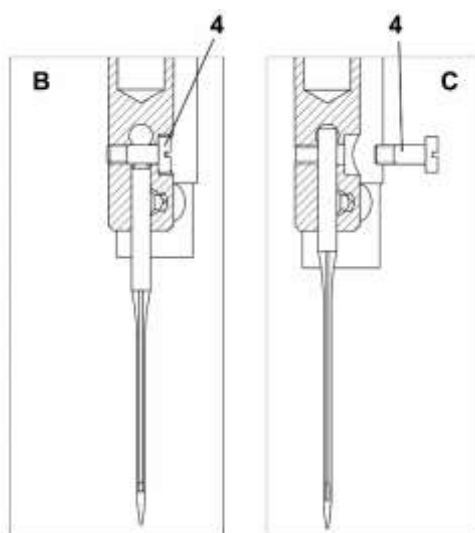
C

D5. NEEDLE REPLACEMENT

Loosen the screw ① and remove the needle ②. Fix a new needle and turn it so that the hook scarf ③ is oriented according to detail ④. Tighten the screw ①.



- When needle type 134 is used, keep the screw ④ according to figure ⑥.
- When needle type 134-35 is used, remove the screw ④ according to figure ⑦.



D6. FOOT LIFTING

Foot lifting with a hand lever

Lift the foot by pressing the lever ① to a stop (foot remains lifted). Lower the foot by returning the lever ① to initial position or by pressing the knee lever ② /if the machine is equipped by that/ and by its subsequent releasing or by the automatic foot lifting by means of the pedal and subsequent pedal releasing.

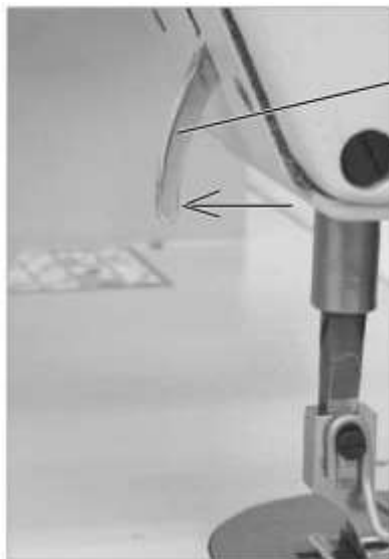
After the foot lifting by hand lever, the machine may be started up (e.g. when winding the hook thread).

Foot lifting with knee lever (if the machine is equipped by that)

The foot is lifted by pressing the lever ②, the foot is lowered by releasing the lever.

Automatic foot lifting – by solenoid – using the pedal [applies to GZ-5527-x47]

Tread the pedal ③ in position -1 (see section D11). The foot is lifted. Automatic foot lifting after trimming can be pre-selected. The foot is lowered by the pedal ③ treading in position +1.



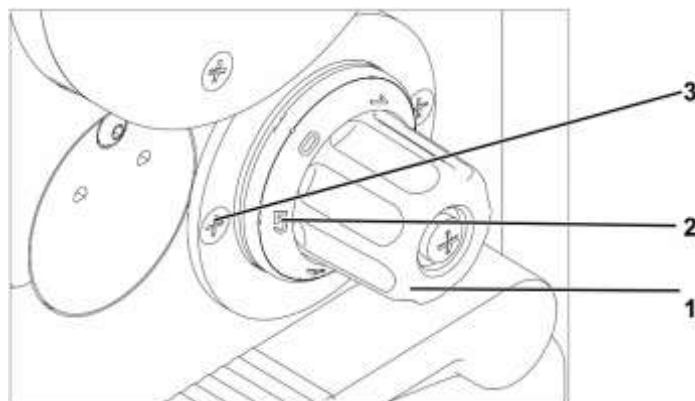
D7. FOOT PRESSURE SETTING



Regulate the foot pressure by means of a screwdriver ① which is supplied with the machine accessories. The pressure increases by turning in the arrow direction and vice versa. The foot pressure should be as small as possible, but strong enough so that the feeding is reliable even at a high sewing speed.

D8. STITCH LENGTH SETTING

Turn the knob ① so that the number ② indicating the required stitch length in mm is opposite the screw ③.



D9. BACKTACKING (REVERSE FEED, CLOSING UP)

Backtacking with hand lever [applies to manually controlled subclasses: GZ-5527-x43]

Press the lever ① downwards. The machine will feed in the reverse direction until you release the lever.



Backtacking with a micro switch [applies to automatically controlled subclasses: GZ-5527-x47]

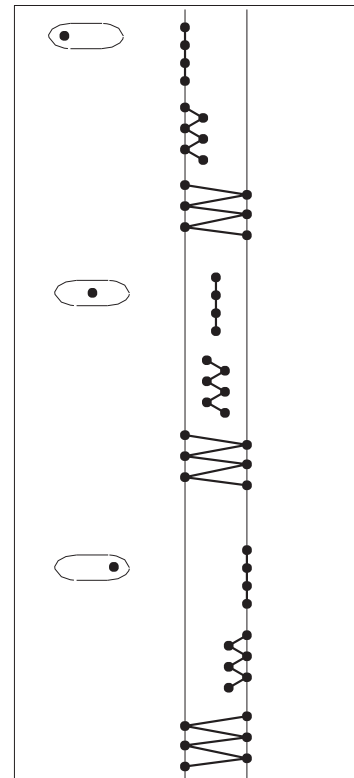
Push the micro switch ②. The machines will backtacking until you release the grip.

Automatic backtacking

On machines equipped with the positioning motor and automatic control the automatic backtacking can be pre-selected with a pre-selected number of reverse stitches both at the beginning and at the end of the seam. At the beginning of the seam (after previous thread trimming) after the pedal treading forwards the machine will sew the pre-selected bar and continue the sewing. At the end of the seam it will sew the pre-selected bar at the pedal treading in position -2.



D10. SETTING OF ZIG-ZAG STITCH WIDTH (THROW) AND POSITION



Setting of zig-zag stitch width

Press the lever ① in the arrow direction ① until it strikes the lever ② - the lever arrest is released ②. Grip both levers at the same time and set the zig-zag stitch width by turning the lever ② against the selected number indicating the stitch width. Arrest the lever ② position by turning the lever ① against the arrow direction ①.

Setting of zig-zag stitch position

Press the lever ① in the arrow direction ① until it strikes the lever ②. The lever arrest is released ③. Make sure that the lever setting does not change at the arrest switching off ②.

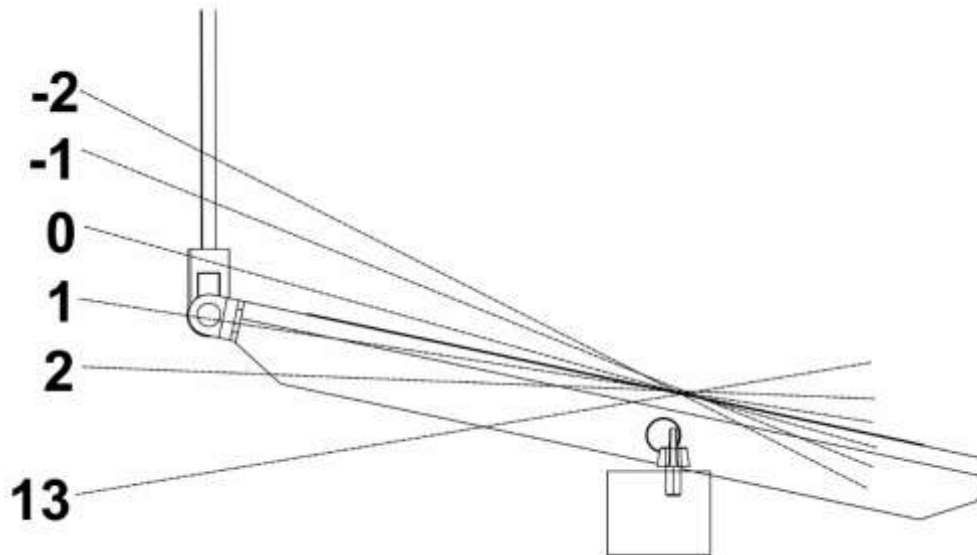
Press the lever ③ and turn it at the same time up to the stop (inside the machine) against the respective symbol indicating the zig-zag stitch position. Only the middle position of the lever is arrested with a lock. After the lever ③ setting, carry out arresting with the lever ①.

In picture ③ there are examples of setting the zig-zag stitch width and position from which it is visible that the zig-zag stitch width does not change at the position change.

D11. AUTOMATIC MACHINE CONTROL

Control pedal

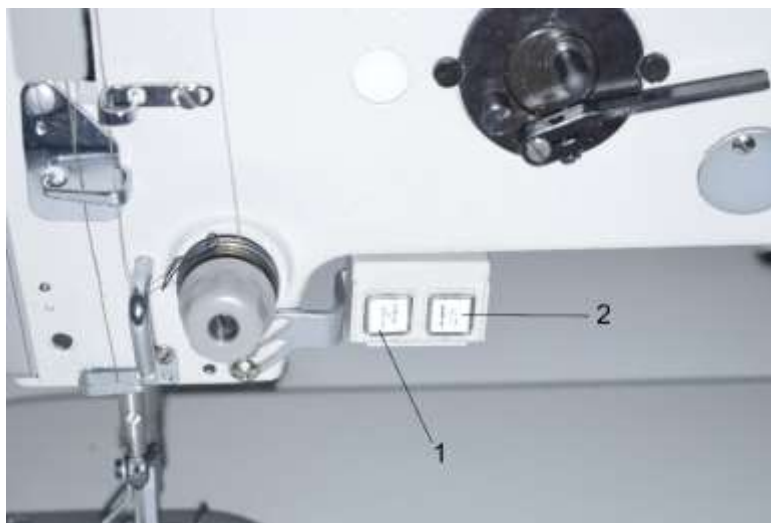
The pedal position is scanned with a proximity switch which distinguishes 16 levels.



The meaning is in the table:

Pedal position	Pedal motion	Meaning
-2	Heel fully backwards	Command for thread trimming (seam finish)
-1	Heel slightly backwards	Command for foot lifting
0	Neutral position	See note
1	Slightly forwards	Command for foot lowering
2	Further forwards	Sewing at minimum speed (1 gear)
3	Further forwards	Sewing – second speed gear
:	:	:
13	Fully forward	Sewing at maximum speed (12 gear)

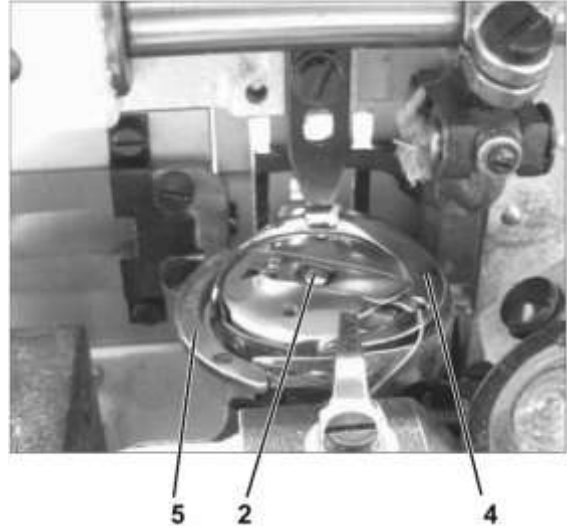
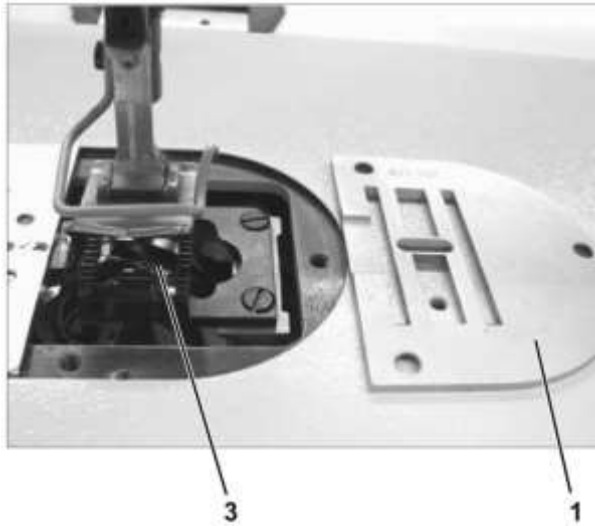
Note: The needle position can be pre-selected for the neutral position (needle down/up) as well as for the foot position (down/up) at the seam-stop (by putting the pedal in the neutral position), and for the foot position (down/up) after the seam finishing (by treading the pedal with heel fully backwards and putting the pedal in the neutral position)

D12. KEY CONTROL PANEL

Key	Function
1	Hand backtacking. When the key is pressed at sewing, the sewn material is fed backwards.
2	Needle positioning in upper or bottom position By the parameter the key function can be defined 1 = needle up/down 2 = needle up 3 = one stitch (factory setting is 1)

E MACHINE MAINTENANCE

E1. CLEANING AND CHECKING

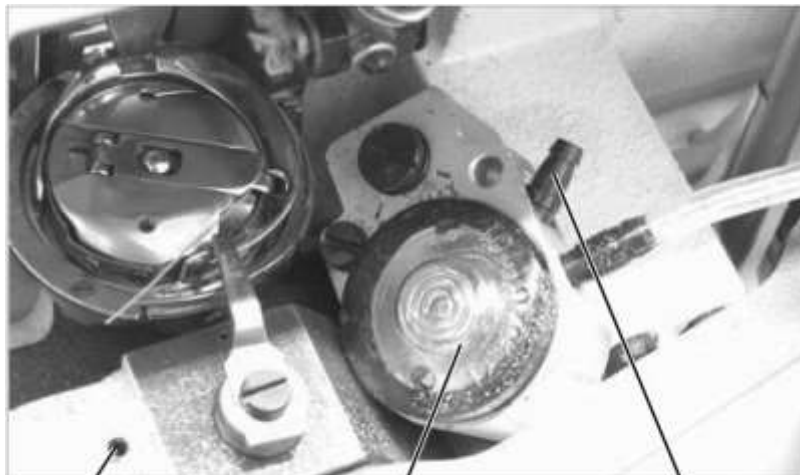


Maintenance	Maintenance interval
<p>Throat plate ① disassembly. Cleaning of throat plate, hook ②, feed dog ③ and their surroundings. It is possible to clean with compressed air.</p> <p>Re-lubrication of hook path with oil and washing of dirt out of the path. Spraying the unnecessary oil out of the hook at the machine high speed operation.</p> <p>Check of oil reserve in oil tanks</p>	1 week
<p>Cleaning of mechanisms in the base plate. Cleaning (vacuuming, wiping out) 1 month oil tray. Cleaning of ventilator grid on the motor.</p>	1 month
<p>Check of bobbin case ④ fitting clearance in the hook housing ⑤.</p> <p>Check of drive V-belt tension (checking method is described in the second part of this Instruction for Use). Lubrication of swinging shafts with grease.</p>	1 year

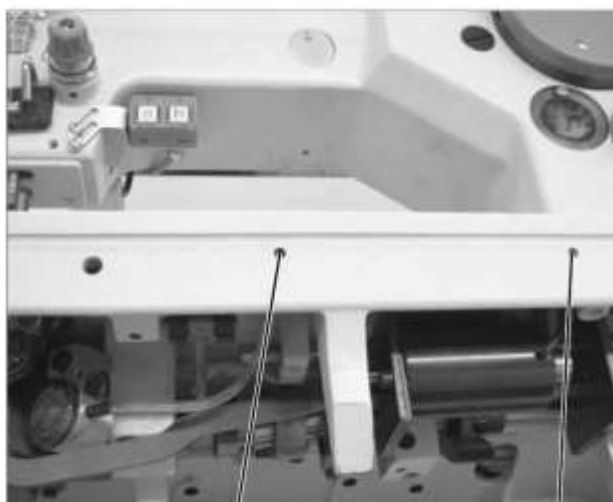
E2. LUBRICATION



1 2



6 3 5



4 7



8 9

Oil lubrication

If the oil volume in the tank (1) drops to the level indicated with MIN mark, add oil through the hole (2) up to MAX mark.

Add oil into tank (3) through the hole (4) at least once a week until the oil starts flowing from the terminal (5).

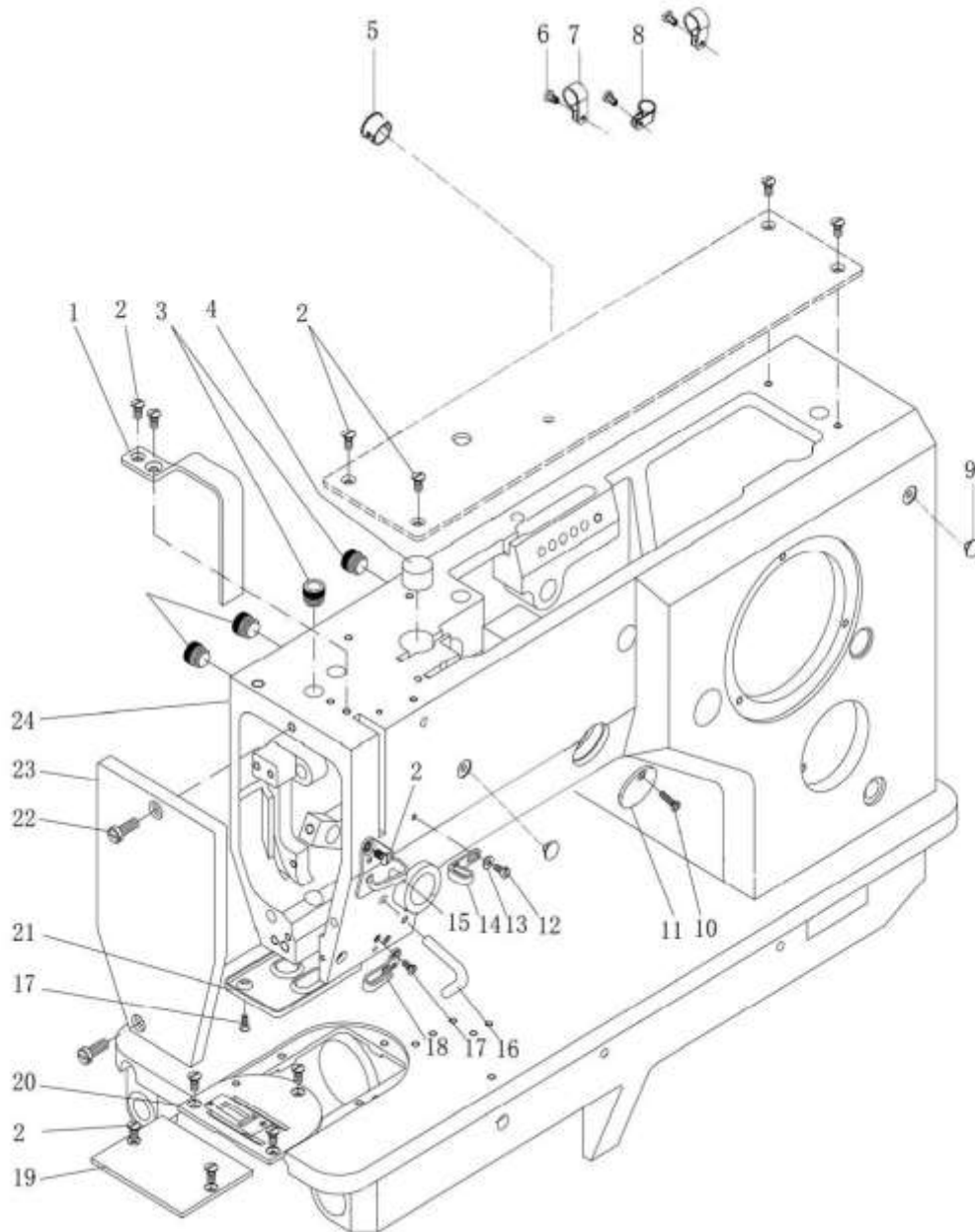
Add several drops of oil in holes (6) and (7) once a month.

Grease lubrication

Add grease in grease cups (8) and (9) by means of a lubrication press once a year.

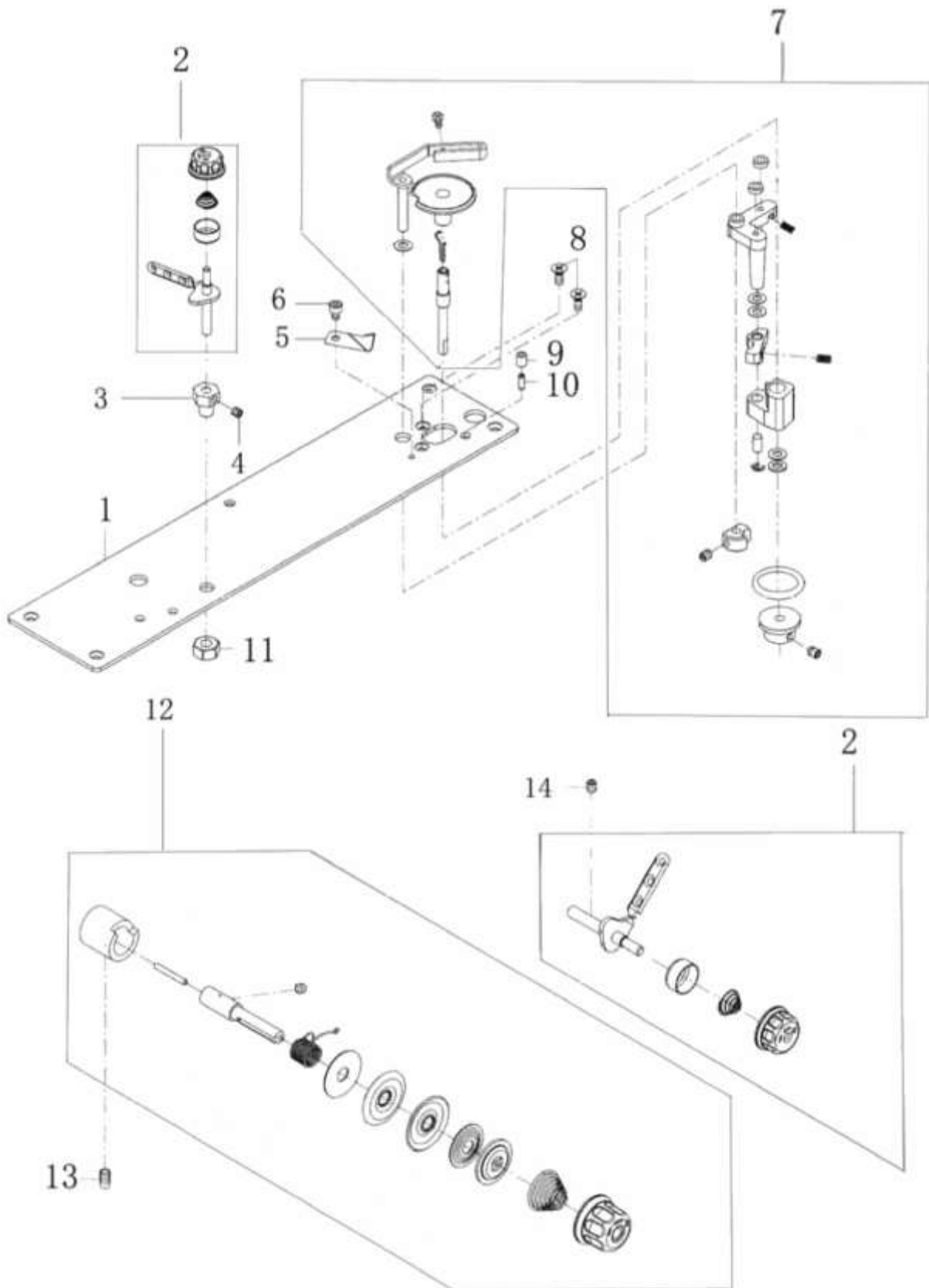
F SPARE PARTS BOOK

A. ARM BED AND COVERS



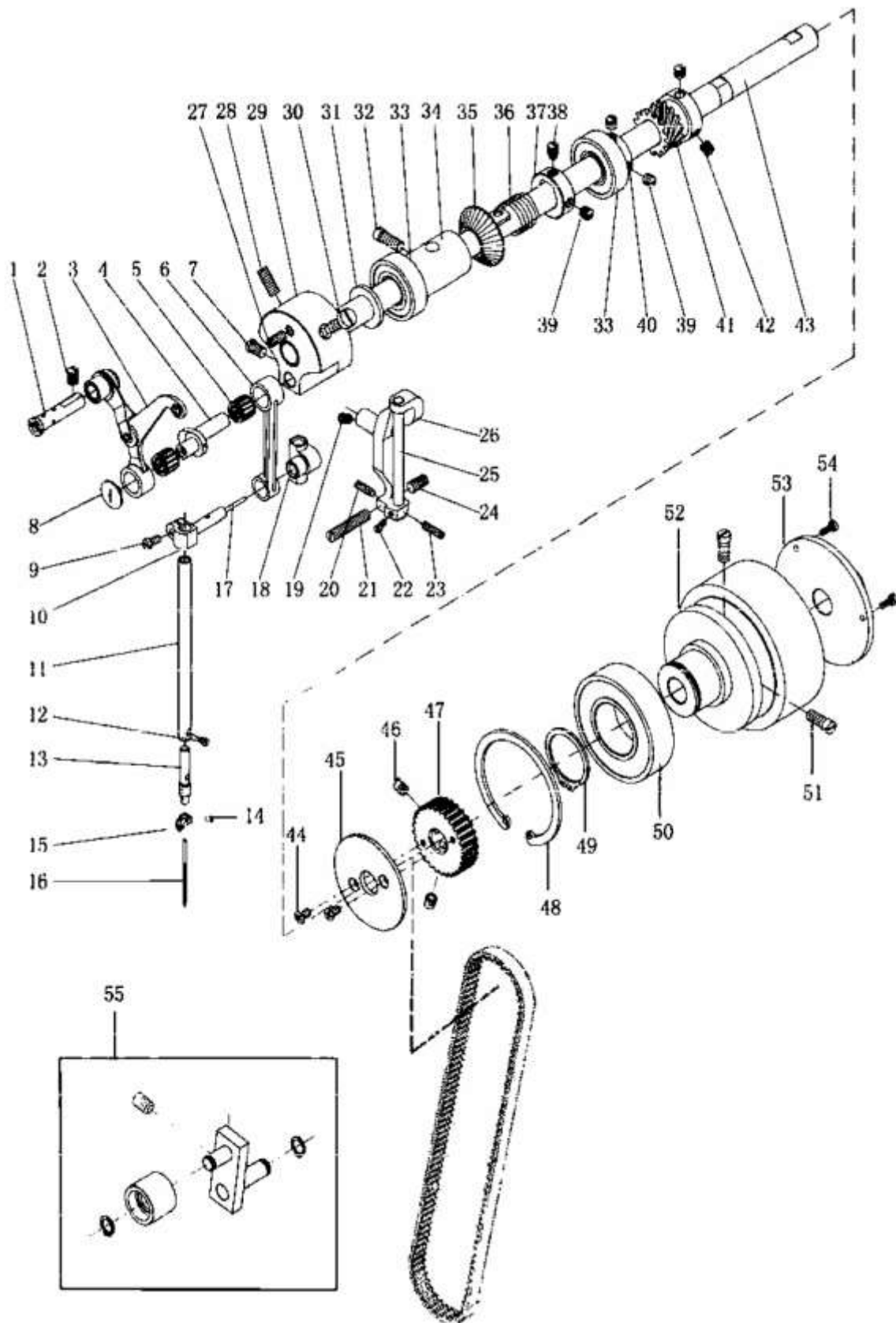
A. ARM BED AND AND COVERS						
Ref. No	Parts No.	Name of parts	Description	Qty		Note
				14x	44x	
A01	7.02.11.059	Thread take up lever guard cover		1	1	
A02	7.02.15.388	Thread take up lever guard cover screw	M4x8	5	5	
A02-1	7.02.15.1087		M4x8	11	11	
A03	7.02.16.058	Plastic plug		5	4	
A04	7.02.16.032	Felt		1	1	
A05	7.02.16.500	Line card		1	1	
A06	7.02.15.1080	Upper clip of supply cord screw	M4x8	3	3	
A07	7.02.16.167	Upper clip of supply cord		1	2	
A08	7.02.16.166	Upper clip of supply cord		1	1	
A09	7.02.16.501	Plastic plug		2	2	
A10	7.02.15.393	Round cover screw	M3x12	1	1	
A11	7.02.11.063	Round cover		1	1	
A12	7.02.15.392	Thread guide plate screw	M3x6	1	1	
A13	7.02.18.070	Screw washer	GB/T97.1 3	1	1	
A14	7.02.14.028	Thread guide plate		1	1	
A15	7.02.14.027	Thread guide plate		1	1	
A16	7.02.14.025	Thread guide lever (lower)		1	1	
A17	7.02.15.390	Lower thread guide plate screw	M3x8	1	1	
A18	7.02.14.026	Lower thread guide plate		1	1	
A19	7.02.02.085	Slide plate [GZ-552x-x43]		1	1	
	7.02.02.073	Slide plate		1	1	
A20	7.02.02.086	Needle plate			1	
	7.02.02.079	Needle plate		1		
A21	7.02.11.062	Felt splint		1	1	
A22	7.02.15.389	Panel screw	M5x14	2	2	
A23	7.02.11.061	Panel		1	1	
A24	7.01.02.013	Machine frame		1	1	

B. BOBBIN WINDER AND THREAD TENSION PARTS



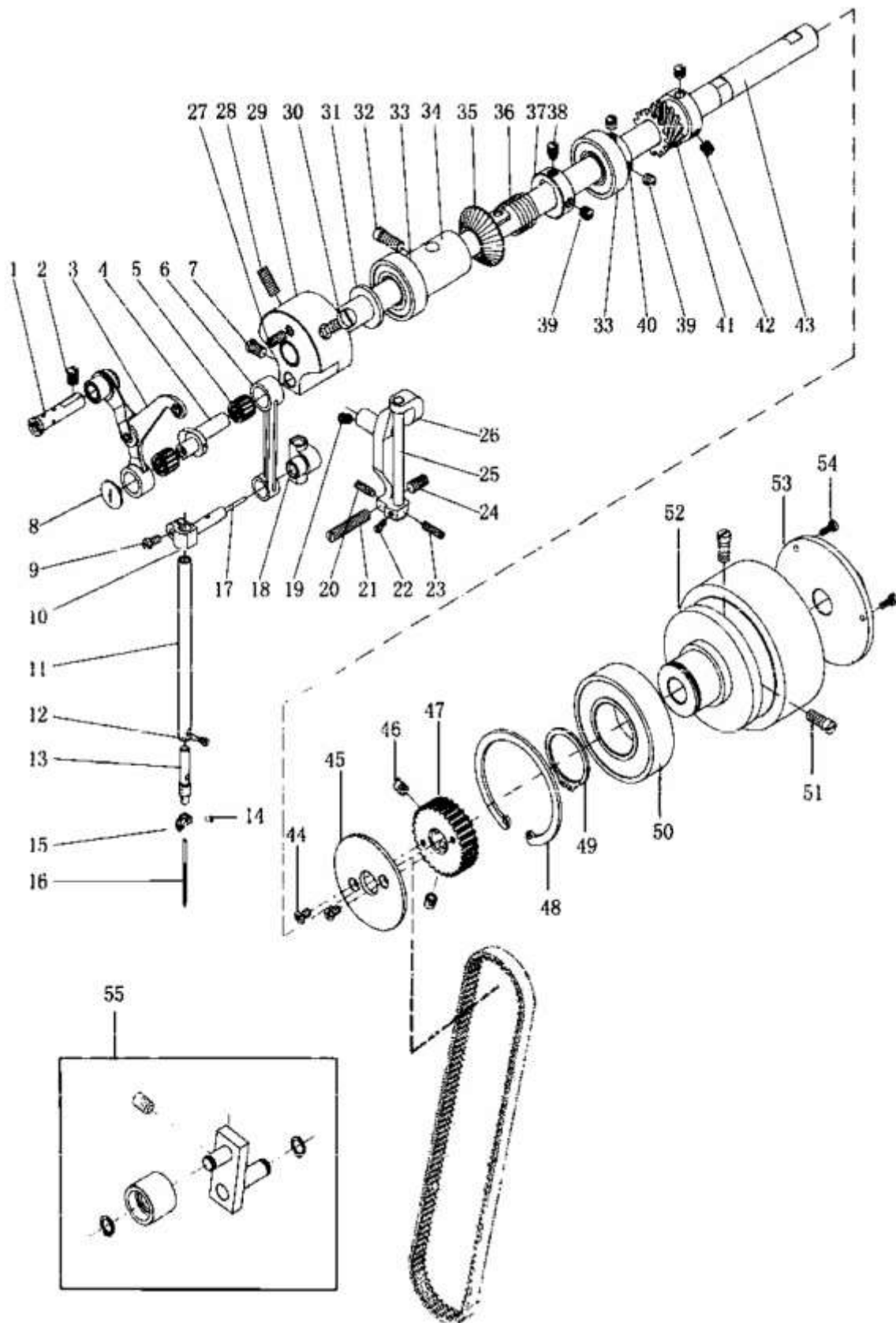
B. BOBBIN WINDER AND THREAD TENSION PARTS						
Ref. No	Parts No.	Name of parts	Description	Qty		Note
				14x	44x	
B01	7.02.11.590	Top cover		1	1	
B02	7.02.01.210	Top cover thread tension assy.		1	1	
B03	7.02.08.369	Thread tension plate bushing		1	1	
B04	7.02.15.056	Screw		1	1	
B05	7.02.20.070	Thread winder thread cutter		1	1	
B06	7.02.15.1031	Thread cutter screw	M4x6	1	1	
B07	7.02.01.213	Thread winder assy.		1	1	
B08	7.02.15.1087	Thread winder mounting screw	M4x12	2	2	
B09	7.02.08.362	Pin bushing		1	1	
B10	7.02.10.302	Pin		1	1	
B11	7.02.15.1030	Nut	M8	1	1	
B12	7.02.01.038	Thread tension assy.		1	1	
B13	7.02.15.006	Screw	M4x8	1	1	
B14	7.02.15.1065	Screw	M4x5	1	1	

C. UPPER SHAFT AND NEEDLE BAR THREAD TAKE-UP PARTS (1/2)



C. UPPER SHAFT AND NEEDLE BAR THREAD TAKE-UP PARTS (1/2)						
Ref. No	Parts No.	Name of parts	Description	Qty		Note
				14x	44x	
C01	7.02.10.091	Thread take up lever support stud		1	1	
C02	7.02.15.411	Thread take up lever support stud screw	M6(0.75)x8	1	1	
C03	7.02.05.066	Thread take up lever assy.			1	
	7.02.05.530	Thread take up lever assy.		1		
C04	7.02.06.036	Libra crank			1	
	7.02.06.087	Libra crank		1		
C05	7.02.04.025	Bearing		2	2	
C06	7.02.05.067	Needle bar link		1	1	
C07	7.02.15.395	Libra crank screw	M6(0.75)x7.5	1	1	
C08	7.02.15.413	Thread take up crank screw	9/64(40)x5.5	1	1	
C09	7.02.15.408	Needle bar joint screw	M4x8	1	1	
C10	7.02.02.088	Needle bar joint		1	1	
C11	7.02.03.071	Needle bar		1	1	
C12	7.02.15.409	Needle clamp shaft screw	M2.5x5	1	1	
C13	7.02.10.090	Needle clamp shaft		1	1	
C14	7.02.15.412	Screw	M3x5.8	1	1	
C15	7.02.14.033	Needle clamp washer		1	1	
C16	7.02.21.140	Needle	19#	1	1	
C17		Needle bar connection wick	∅2x25mm	1	1	
C18	7.02.05.065	Needle bar connection holder		1	1	
C19	7.02.15.056	Needle bar connection bracket tighten screw	M5x5	1	1	
C20	7.02.15.400	Needle bar connection bracket screw (back)	M4x12	1	1	
C21	7.02.15.401	Needle bar connection bracket screw (left)	M6(0.75)x30	1	1	
C22	7.02.15.037	Needle bar connection bracket shaft screw	M3x6	1	1	
C23	7.02.15.404	Needle bar connection bracket screw (front)	M4x16	1	1	
C24	7.02.15.403	Needle bar connection bracket screw (right)	M6(0.75)x11	1	1	
C25	7.02.10.089	Needle bar connection bracket shaft		1	1	
C26	7.02.05.064	Needle bar connection bracket		1	1	
C27	7.02.15.396	Tighten screw	M5x10	1	1	
C28	7.02.15.397	Needle bar crank tighten screw	M6(0.75)x15	1	1	
C29	7.02.06.035	Needle bar crank		1	1	
C30	7.02.15.398	Needle bar crank orientation screw	M6(0.75)x17.5	1	1	
C31	7.02.16.090	Felt		1	1	
C32	7.02.15.399	Arm shaft bushing screw	M6x14	1	1	
C33	7.02.04.024	Arm shaft bearing		2	2	

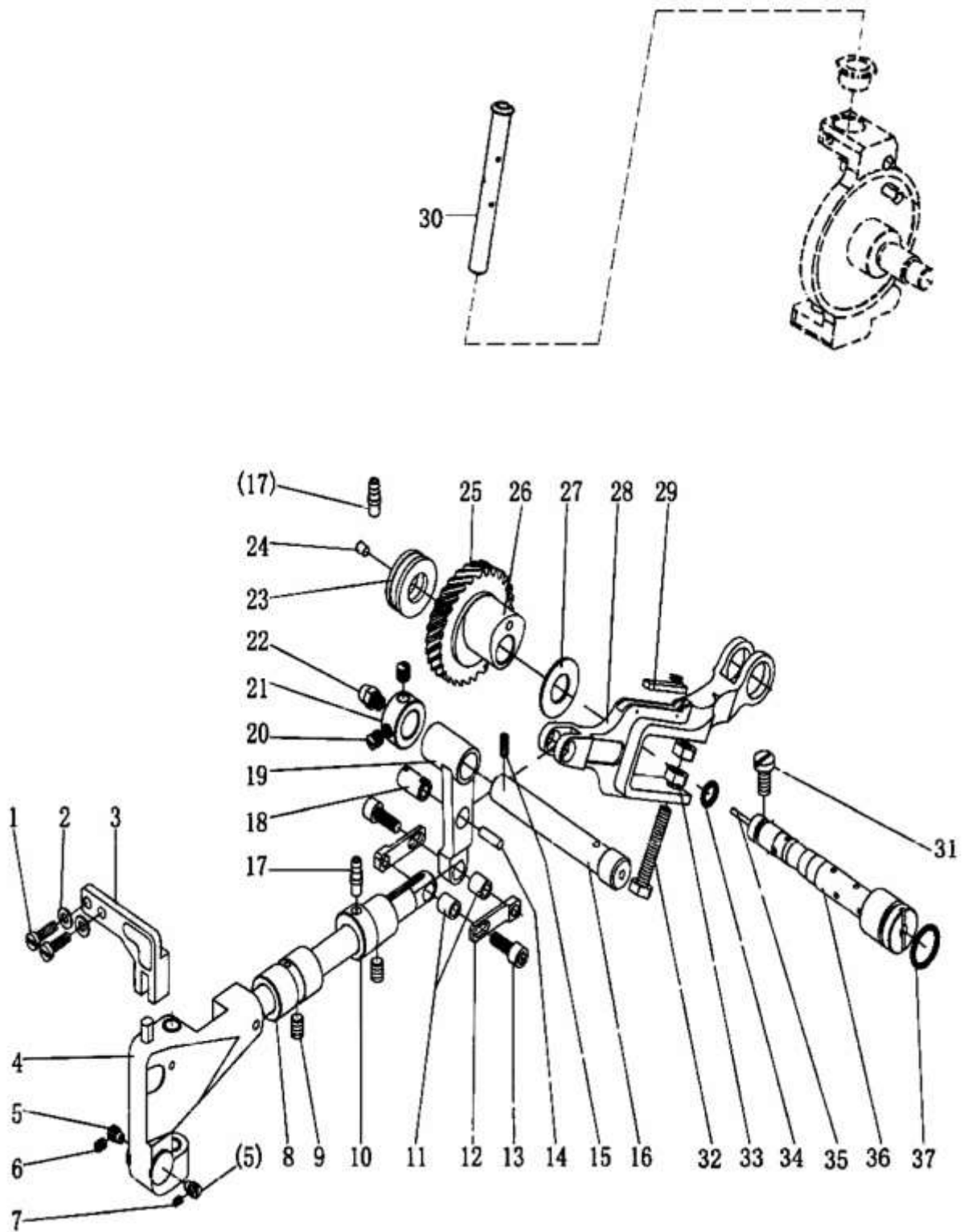
C. UPPER SHAFT AND NEEDLE BAR THREAD TAKE-UP PARTS (2/2)



C. UPPER SHAFT AND NEEDLE BAR THREAD TAKE-UP PARTS (2/2)

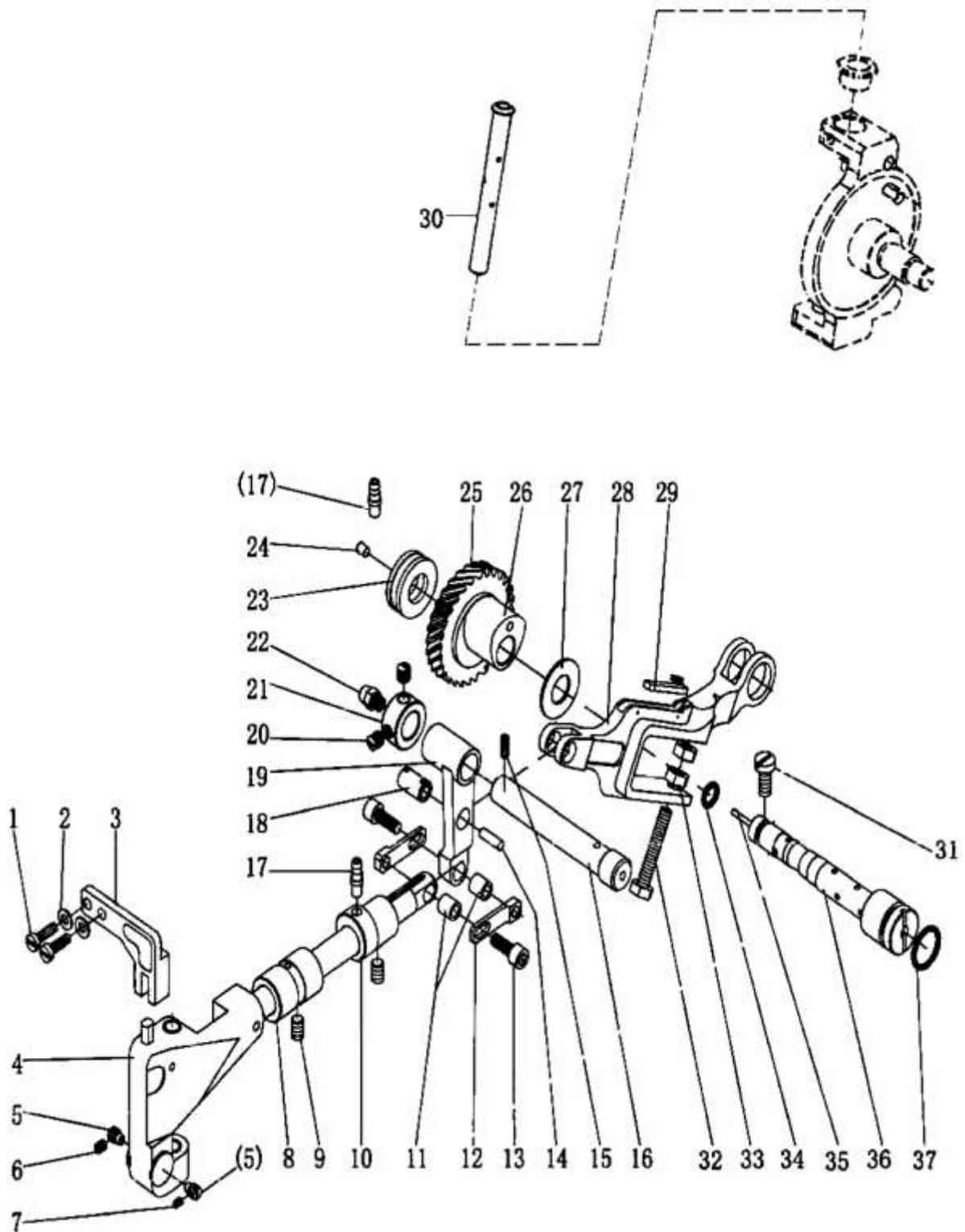
Ref. No	Parts No.	Name of parts	Description	Qty		Note
				14x	44x	
C34	7.02.08.095	Arm shaft bushing		1	1	
C35	7.02.07.059	Winder drive pulley		1	1	
C36	7.02.17.094	Replacement spring		1	1	
C37	7.02.09.032	Winder drive pulley collar		1	1	
C38	7.02.15.407	Drive pulley orientation screw	M6(0.75)x7	1	1	
C39	7.02.15.428	Collar screw	M6(0.75)x5	3	3	
C40	7.02.08.102	Arm shaft bearing collar		1	1	
C41	7.02.07.051	Vibrating needle drive gear		1	1	
C42	7.02.15.126	Small gear screw	1/4(40)x7	3	3	
C43	7.02.03.490	Arm shaft		1	1	
C44	7.02.15.797	Stopper plate screw		2	2	
C45	7.02.11.224	Stopper plate		1	1	
C46	7.02.15.057	Screw	M6x1x8	2	2	
C47	7.02.07.195	Synchronous pulley (upper)		1	1	
C48	7.02.18.076	Elastic stop ring	GB/T893.1-1986- 62	1	1	
C49	7.02.18.078	Elastic stop ring	GB/T894.1-1986- 30	1	1	
C50	7.02.04.027	Arm shaft bearing (right)		1	1	
C51	7.02.15.399	Pulley mounting screw	M6x14	2	2	
C52	7.02.07.054	Pulley		1	1	
C53	7.02.11.064	Pulley cover		1	1	
C54	7.02.15.432	Pulley cover screw	M3x8	3	3	
C55	7.02.01.211	Tension wheel assy.		1	1	

D. NEEDLE BAR VIBRATING PARTS I (1/2)



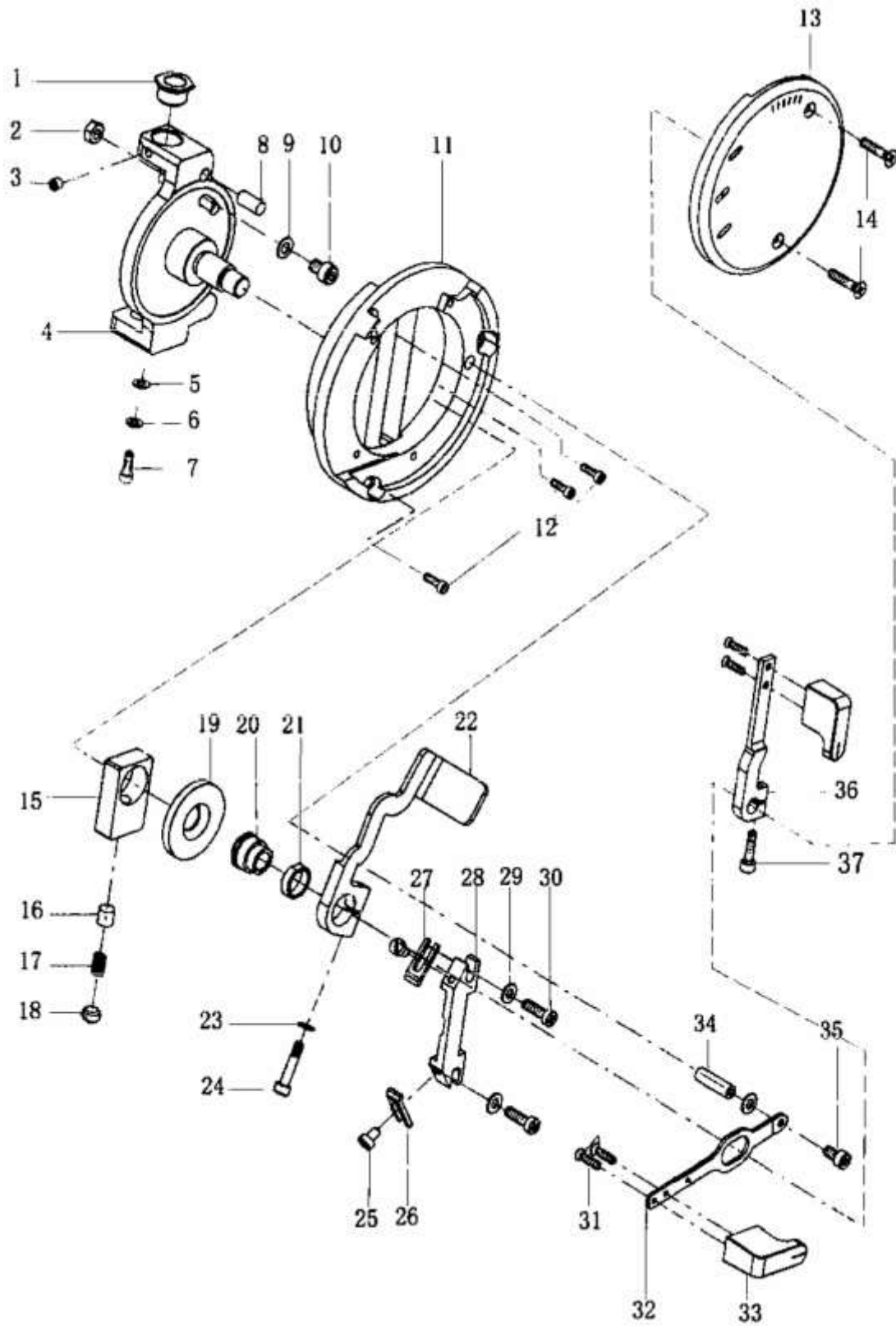
D. NEEDLE BAR VIBRATING PARTS I (1/2)						
Ref. No	Parts No.	Name of parts	Description	Qty		Note
				14x	44x	
D01	7.02.15.405	Fixed bracket screw	M4x14	5	5	
D02	7.02.18.071	Washer	GB/T97.1	2	2	
D03	7.02.13.043	Needle bar vibrating fixed bracket		1	1	
D04	7.02.01.039	Needle bar vibrating bracket		1	1	
D05	7.02.15.407	Needle bar vibrating bracket screw	M6(0.75)x7	2	2	
D06	7.02.15.391	Tighten screw	M4x5	1	1	
D07	7.02.15.406	Tighten screw	M3x4	1	1	
D08	7.02.08.096	Needle bar vibrating shaft bushing (left)		1	1	
D09	7.02.15.410	Needle bar vibrating shaft bushing screw	M6x8	2	2	
D10	7.02.08.097	Needle bar vibrating shaft bushing (right)		1	1	
D11	7.02.08.101	Connection bushing		2	2	
D12	7.02.17.091	Connection plate		2	2	
D13	7.02.15.443	Connection screw	M5(0.5)x14	2	2	
D14		Felt		1	1	
D15	7.02.15.049	Needle feeding crank shaft tighten screw	M5x8	1	1	
D16	7.02.03.075	Needle feeding crank shaft		1	1	
D17	7.02.16.059	Oil spile		2	2	
D18	7.02.10.093	Connection shaft		1	1	
D19	7.02.05.076	Link lever		1	1	
D20	7.02.15.428	Collar screw	M6(0.75)x5	2	2	
D21	7.02.09.030	Needle feeding crank shaft collar		1	1	
D22	7.02.16.067	Coppery oil spile		1	1	
D23	7.02.04.026	Bearing		1	1	
D24	7.02.16.064	Aluminium oil plug		1	1	
D25	7.02.07.050	Vibrating needle driven gear		1	1	
D26	7.02.06.092	Vibrating needle cam		1		
	7.02.06.037	Vibrating needle cam			1	
D27	7.02.18.075	Coppery washer		1	1	
D28	7.02.05.077	Vibrating needle link lever		1	1	
D29	7.02.16.056	Felt		1	1	
D30	7.02.03.491	Vibrating range shaft		1	1	
D31	7.02.15.426	Vibrating needle eccentric shaft screw	M6x12	1	1	
D32	7.02.15.446	Vibrating needle link rod screw	M6(0.75)x34	1	1	
D33	7.02.15.449	Vibrating needle link rod screw locking nut	M6(0.75)	2	2	
D34	7.02.16.065	Vibrating needle eccentric shaft o-ring (small)		1	1	

D. NEEDLE BAR VIBRATING PARTS I (2/2)



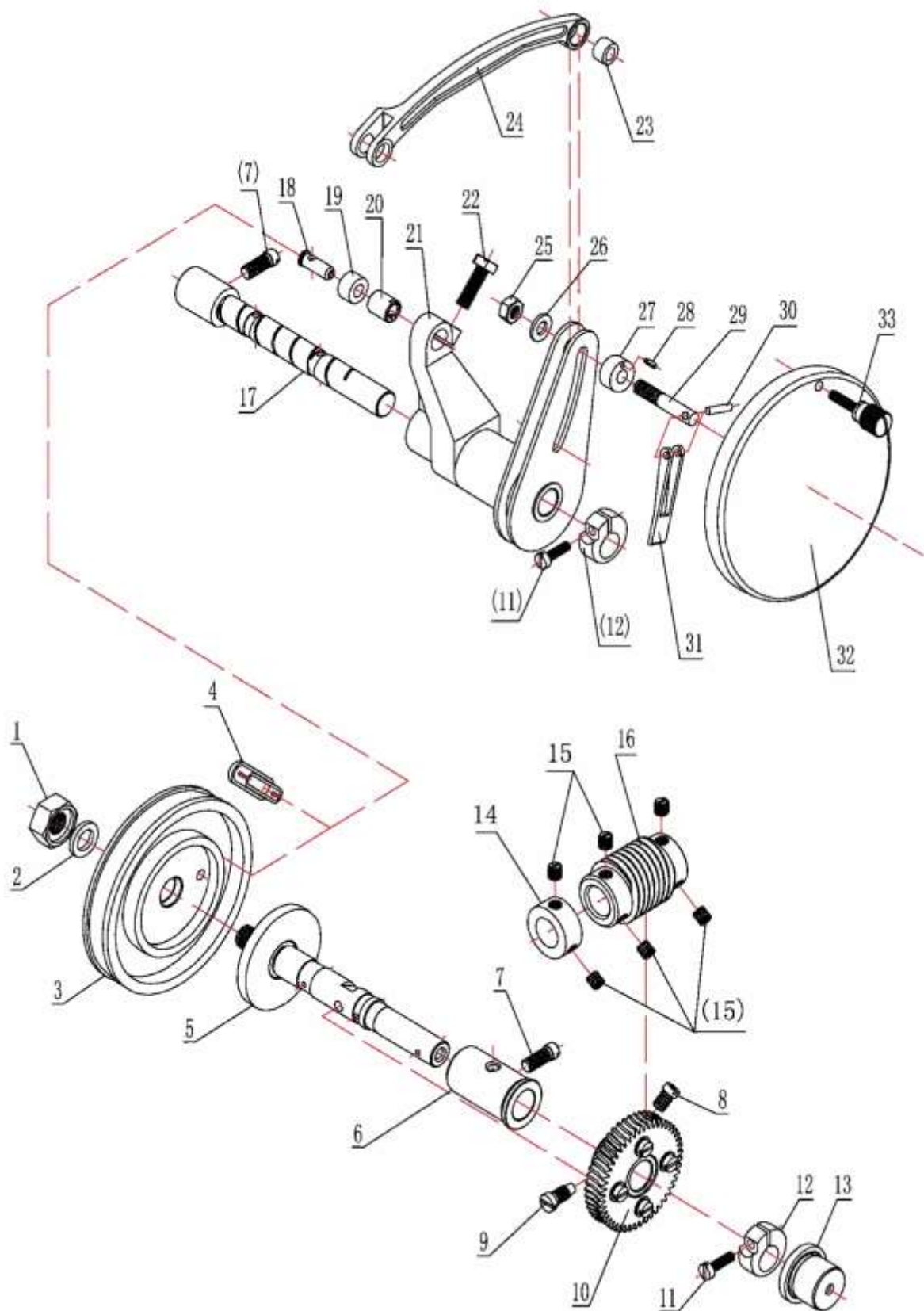
D. NEEDLE BAR VIBRATING PARTS I (2/2)						
Ref. No	Parts No.	Name of parts	Description	Qty		Note
				14x	44x	
D35		Oil wick	∅2x80 mm	1	1	
D36	7.02.10.094	Vibrating needle eccentric shaft		1	1	
D37	7.02.16.066	O-ring (big)		1	1	
D38	7.02.08.099			1	1	
D39	7.02.08.100			1	1	
D40	7.02.15.427			1	1	

E1. NEEDLE BAR VIBRATING PARTS II [GZ-5527 series]



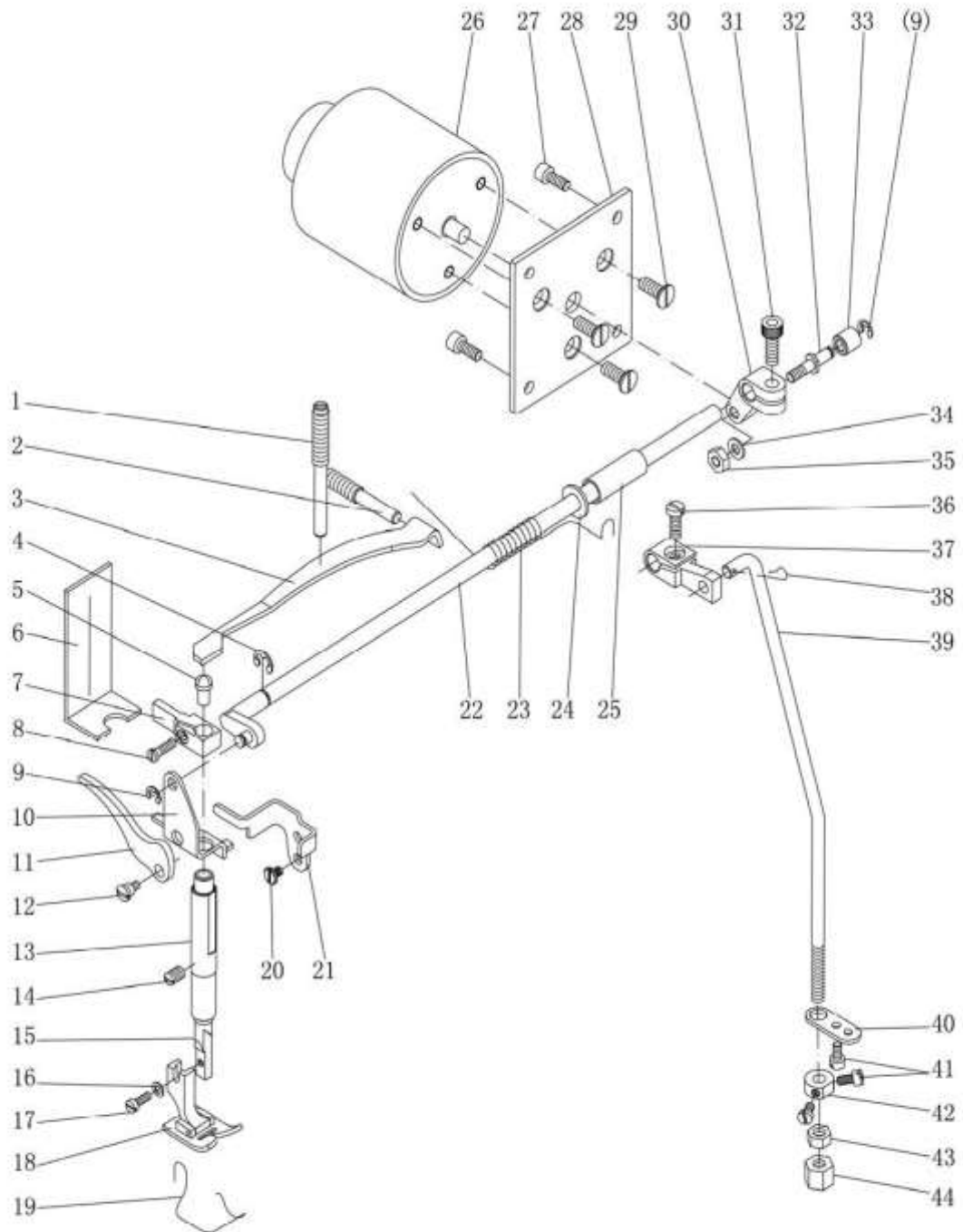
E1. NEEDLE BAR VIBRATING PARTS II [GZ-5527 SERIES]						
Ref. No	Parts No.	Name of parts	Description	Qty		Note
				14x	44x	
E1-01	7.02.08.367	Eccentric bushing		1	1	
E1-02	7.02.15.268	Nut	M4	1	1	
E1-03	7.02.15.047	Screw	M4x4	1	1	
E1-04	7.02.13.440	Vibrating bracket		1	1	
E1-05	7.02.18.016	Washer		1	1	
E1-06	7.02.18.055	Elastic washer	ø5	1	1	
E1-07	7.02.15.053	Screw	M5x12	1	1	
E1-08	7.02.10.303	Retainer ring		1	1	
E1-09	7.02.18.057	Washer		1	1	
E1-10	7.02.15.1031	Screw	M4x6	1	1	
E1-11	7.02.06.084	Turntable		1	1	
E1-12	7.02.15.405	Turntable mounting screw		3	3	
E1-13	7.02.16.503	Scale			1	
	7.02.16.105	Scale		1		
E1-14	7.02.15.1088	Screw		2	2	
E1-15	7.02.12.082	Slide block		1	1	
E1-16	7.02.16.509	Adjusting plug		1	1	
E1-17	7.02.17.480	Spring		1	1	
E1-18	7.02.15.423	Adjusting screw		1	1	
E1-19	7.02.18.400	Washer		1	1	
E1-20	7.02.15.1084	Nut		1	1	
E1-21	7.02.08.361	Stopper spanner handle bushing		1	1	
E1-22	7.02.05.510	Stopper spanner		1	1	
E1-23	7.02.18.057	Washer		1	1	
E1-24	7.02.15.552	Screw	M4x20	1	1	
E1-25	7.02.15.026	Screw	M4x6	2	2	
E1-26	7.02.11.591	Clamp plate (left)		1	1	
E1-27	7.02.11.592	Clamp plate (right)		1	1	
E1-28	7.02.11.593	Stopper plate		1	1	
E1-29	7.02.18.071	Washer		3	3	
E1-30	7.02.15.405	Screw	M4x14	2	2	
E1-31	7.02.15.421	Screw	M3x12	4	4	
E1-32	7.02.05.511	Vibrating needle spanner		1	1	
E1-33	7.02.16.504	Handle		2	2	
E1-34	7.02.15.1082	Nut		1	1	
E1-35	7.02.15.837	Screw		1	1	
E1-36	7.02.05.512	Changing-over spanner		1	1	
E1-37	7.02.15.417	Screw	M4x12	1	1	

E2. NEEDLE BAR VIBRATING PARTS II [GZ-5525 series]



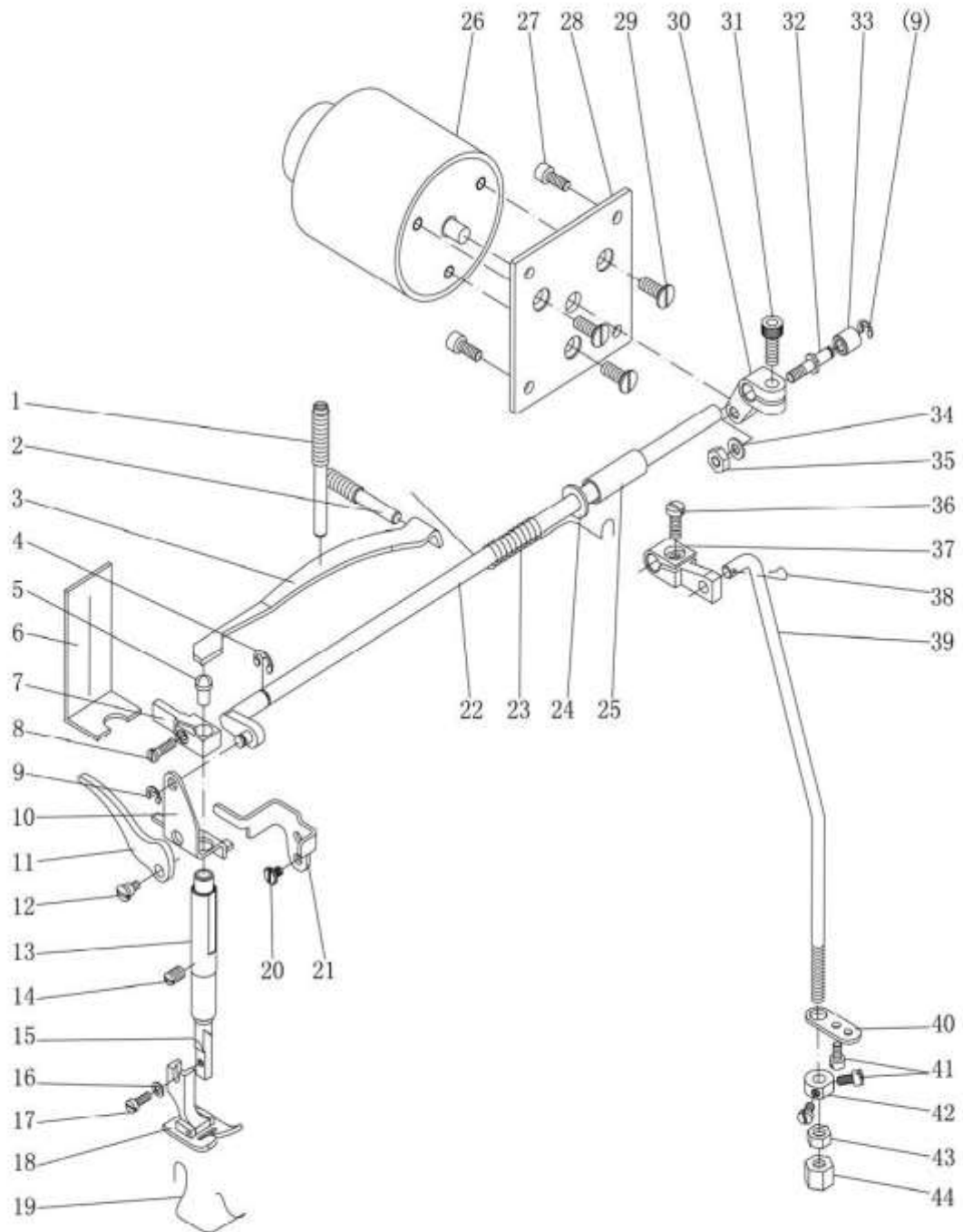
E2. NEEDLE BAR VIBRATING PARTS II [GZ-5525 SERIES]						
Ref. No	Parts No.	Name of parts	Description	Qty		Note
				14x	44x	
E2-01	7.02.15.382	Hexagonal nut	M10	1	1	
E2-02	7.02.17.113	Spring washer		1	1	
E2-03	7.02.06.060	Cam		1	1	
E2-04	7.02.16.077	Seal cover		1	1	
E2-05	7.02.10.133	Worm wheel shaft		1	1	
E2-06	7.02.08.094	Worm wheel shaft bushing (back)		1	1	
E2-07	7.02.15.399	Screw	M6x14	2	2	
E2-08	7.02.15.431	Screw	M6(0.75)x10	1	1	
E2-09	7.02.15.384	Screw	M6(0.75)	1	1	
E2-10	7.02.07.069	Worm wheel		1	1	
E2-11	7.02.15.405	Screw	M4x14	2	2	
E2-12	7.02.09.033	Retaining ring		2	2	
E2-13	7.02.08.117	Worm wheel shaft bushing		1	1	
E2-14	7.02.09.034	Retaining ring		1	1	
E2-15	7.02.15.428	Screw	M6(0.75)x5	6	6	
E2-16	7.02.07.070	Worm bolt		1	1	
E2-17	7.02.10.131	Vibrating needle shaft		1	1	
E2-18	7.02.10.132	Pin roller shaft		1	1	
E2-19	7.02.12.080	Pin roller		1	1	
E2-20	7.02.08.093	Pin roller shaft eccentric bushing		1	1	
E2-21	7.02.01.037	Vibrating needle crank assy.		1	1	
E2-22	7.02.15.380	Screw	M6x18	1	1	
E2-23	7.02.08.092	Vibrating needle link bushing		1	1	
E2-24	7.02.05.103	Link		1	1	
E2-25	7.02.15.1073	Nut	M6	1	1	
E2-26	7.02.18.046	Washer		1	1	
E2-27	7.02.09.038	Fixing collar		1	1	
E2-28	7.02.10.130	Elastic round pin	∅2	1	1	
E2-29	7.02.10.308	Pin screw		1	1	
E2-30	7.02.10.307	Pin	∅3	1	1	
E2-31	7.02.05.516	Lever		1	1	
E2-32	7.02.11.146	Cover plate		1	1	
E2-33	7.02.15.1151	Screw		1	1	

F. PRESSER FOOT PARTS (1/2)



F. PRESSER FOOT PARTS (1/2)						
Ref. No	Parts No.	Name of parts	Description	Qty		Note
				14x	44x	
F01	7.02.15.414	Presser foot pressure adjusting screw		1	1	
F02	7.02.15.415	Presser bar spring support screw		1	1	
F03	7.02.17.085	Presser bar spring		1	1	
F04	7.02.18.072	E-ring	GB/T896-1986-6	1	1	
F05	7.02.10.092	Presser bar pin		1	1	
F06	7.02.16.033	Felt		1	1	
F07	7.02.12.045	Presser bar slide block		1	1	
F08	7.02.15.417	Presser bar slide block screw	M4x12	1	1	
F09	7.02.18.031	E-ring	GB/T896-1986-4	1	2	
F10	7.02.17.087	Presser foot lifting connection plate		1	1	
F11	7.02.05.068	Presser bar spanner		1	1	
F12	7.02.15.418	Presser bar spanner screw		1	1	
F13	7.02.08.098	Presser bar bushing		1	1	
F14	7.02.15.411	Presser bar bushing tighten screw	M6(0.75)x8	1	1	
F15	7.02.03.072	Presser bar		1	1	
F16	7.02.18.057	Presser foot screw washer		1	1	
F17	7.02.15.419	Presser foot screw	M3.5x10	1	1	
F18	7.02.02.089	Presser foot			1	
	7.02.02.080	Presser foot		1		
F19	7.02.17.088	Spring		1	1	
F20	7.02.15.394	Release lever screw		1	1	
F21	7.02.05.063	Release lever		1	1	
F22	7.02.03.073	Presser foot lifting shaft		1	1	
F23	7.02.17.086	Replacement spring		1	1	
F24	7.02.18.060	Washer	GB/T97.1 8	1	1	
F25	7.02.08.040	Presser foot lifting shaft bushing		1	1	
F26	7.02.19.035	Presser foot lifting electromagnetic		1	1	
F27	7.02.15.1085	Fixed plate screw	M5x12	4	4	
F28	7.02.11.095	Lifting presser foot electromagnetic fixed plate		1	1	
F29	7.02.15.105	Lifting presser foot electromagnetic screw	M6x8	3	3	
F30	7.02.06.081	Presser foot lifting crank		1	1	
F31	7.02.15.048	Presser foot lifting crank screw	M6x15	1	1	
F32	7.02.10.146	Presser foot lifting crank pin		1	1	
F33	7.02.12.081	Slide pole		1	1	
F34	7.02.18.016	Washer	GB/T97.1 5	1	1	
F35	7.02.15.068	Presser foot lifting crank pin nut	GB/T 6170 M5	1	1	

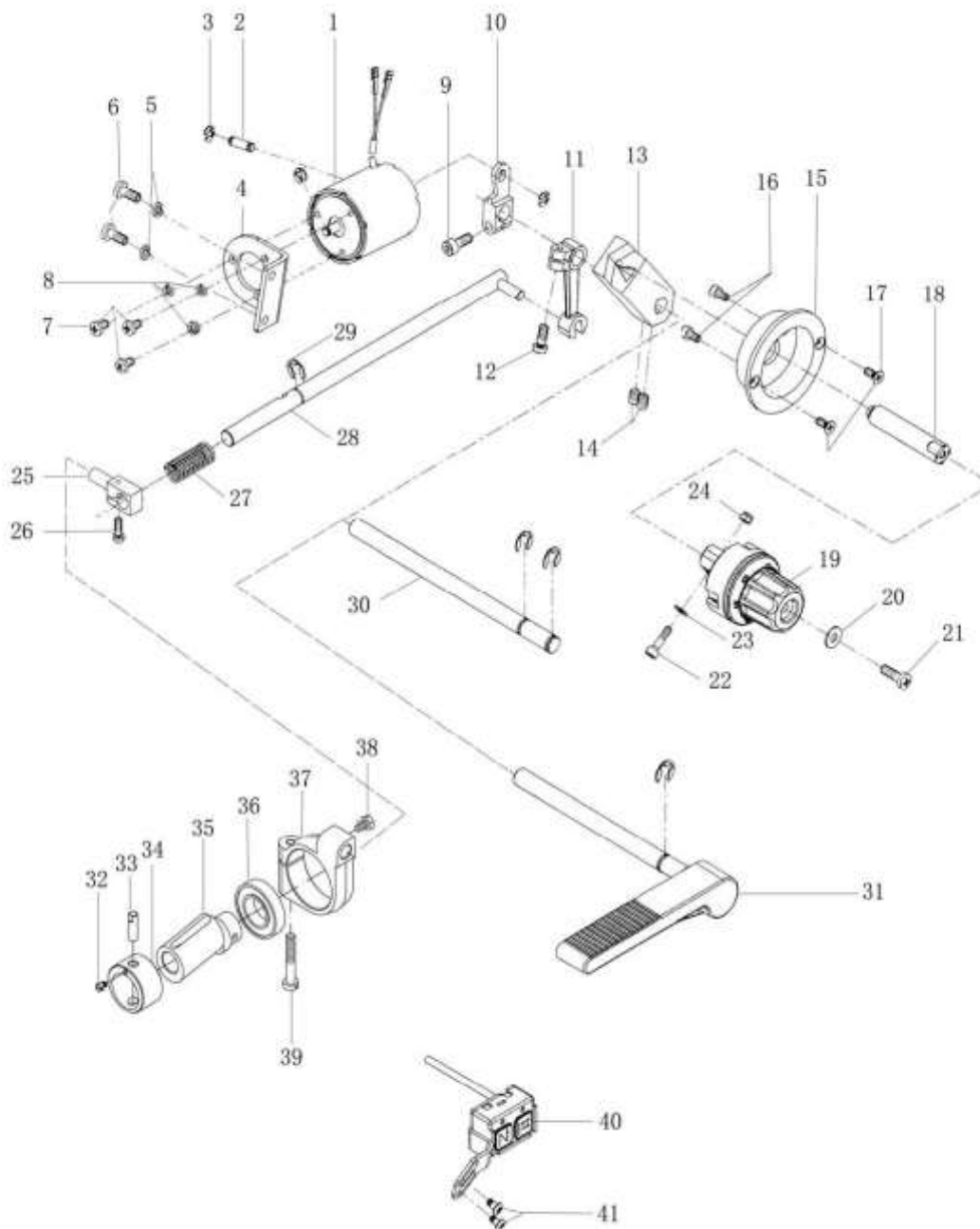
F. PRESSER FOOT PARTS (2/2)



F. PRESSER FOOT PARTS (2/2)

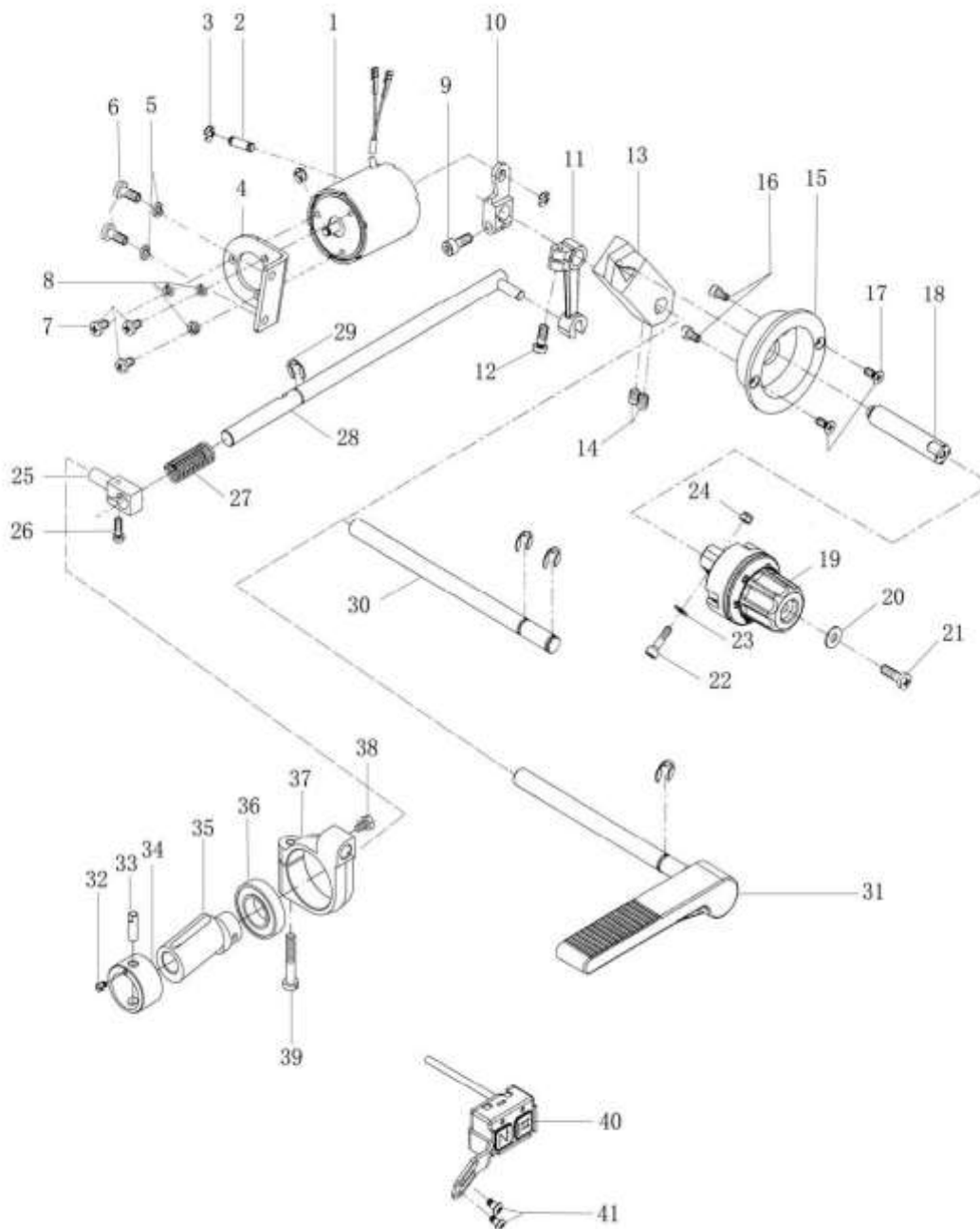
Ref. No	Parts No.	Name of parts	Description	Qty		Note
				14x	44x	
F36	7.02.15.416	Knee lifting crank screw	M5x12	1	1	
F37	7.02.05.069	Knee lifting crank		1	1	
F38	7.02.17.041	Pin		1	1	
F39	7.02.01.04001	Presser foot lifting link lever		1	1	
F40	7.02.01.04002	Link lever fixed plate		1	1	
F41	7.02.15.420	Link lever fixed plate screw	M4x6	3	3	
F42	7.02.01.04003	Link lever collar		1	1	
F43	7.02.01.04004	Nut		1	1	
F44	7.02.01.04005	Knee lifting connection nut		1	1	

G. STITCH LENGTH ADJUSTMENT AND BACKSTITCH PARTS (1/2)



G. STITCH LENGTH ADJUSTMENT AND BACKSTITCH PARTS (1/2)						
Ref. No	Parts No.	Name of parts	Description	Qty		Note
				14x	44x	
G01	7.02.19.040	Backstitch electromagnetic		1	1	
G02	7.02.10.304	Backstitch electromagnetic pin		1	1	
G03	7.02.18.031	E-ring		3	3	
G04	7.02.13.443	Backstitch electromagnetic fixed plate		1	1	
G05	7.02.18.055	Spring washer		2	2	
G06	7.02.15.1085	Screw		2	2	
G07	7.02.15.1080	Screw	M4x8	3	3	
G08	7.02.18.098	Spring washer	∅4	3	3	
G09	7.02.15.058	Screw		1	1	
G10	7.02.06.085	Backstitch electromagnetic crank		1	1	
G11	7.02.05.080	Backstitch control lever crank		1	1	
G12	7.02.15.416	Crank screw	M5x12	2	2	
G13	7.02.05.513	Stitch length vibrating lever		1	1	
G14	7.02.15.057	Screw	M6x1x6	2	2	
G15	7.02.13.441	Stitch length holder		1	1	
G16		Screw		2	2	
G17	7.02.15.1087	Screw		2	2	
G18	7.02.03.492	Stitch length shaft		1	1	
G19	7.02.01.212	Stitch length adjustment assy.		1	1	
G20	7.02.18.017	Washer		1	1	
G21	7.02.15.1086	Screw	M5x20	1	1	
G22	7.02.15.1074	Screw		1	1	
G23	7.02.18.042	Washer		1	1	
G24	7.02.15.574	Nut		1	1	
G25	7.02.12.050	Backstitch block		1	1	
G26	7.02.15.424	Backstitch block screw	M4x12	1	1	
G27	7.02.17.092	Replacement spring		1	1	
G28	7.02.03.076	Backstitch connection shaft		1	1	
G29	7.02.18.028	E-ring	∅8	2	3	
G30	7.02.03.493	Backstitch shaft		1	1	
G31	7.02.03.077	Backstitch shaft		1	1	
G32	7.02.01.04204	Orientation pin screw		1	1	
G33	7.02.01.04203	Orientation pin		1	1	
G34	7.02.01.04202	Feed backstitch cam bushing		1	1	
G35	7.02.01.04201	Feed backstitch cam		1	1	
G36	7.02.04.024	Backstitch cam bearing		1	1	
G37	7.02.06.039	Backstitch cam crank		1	1	

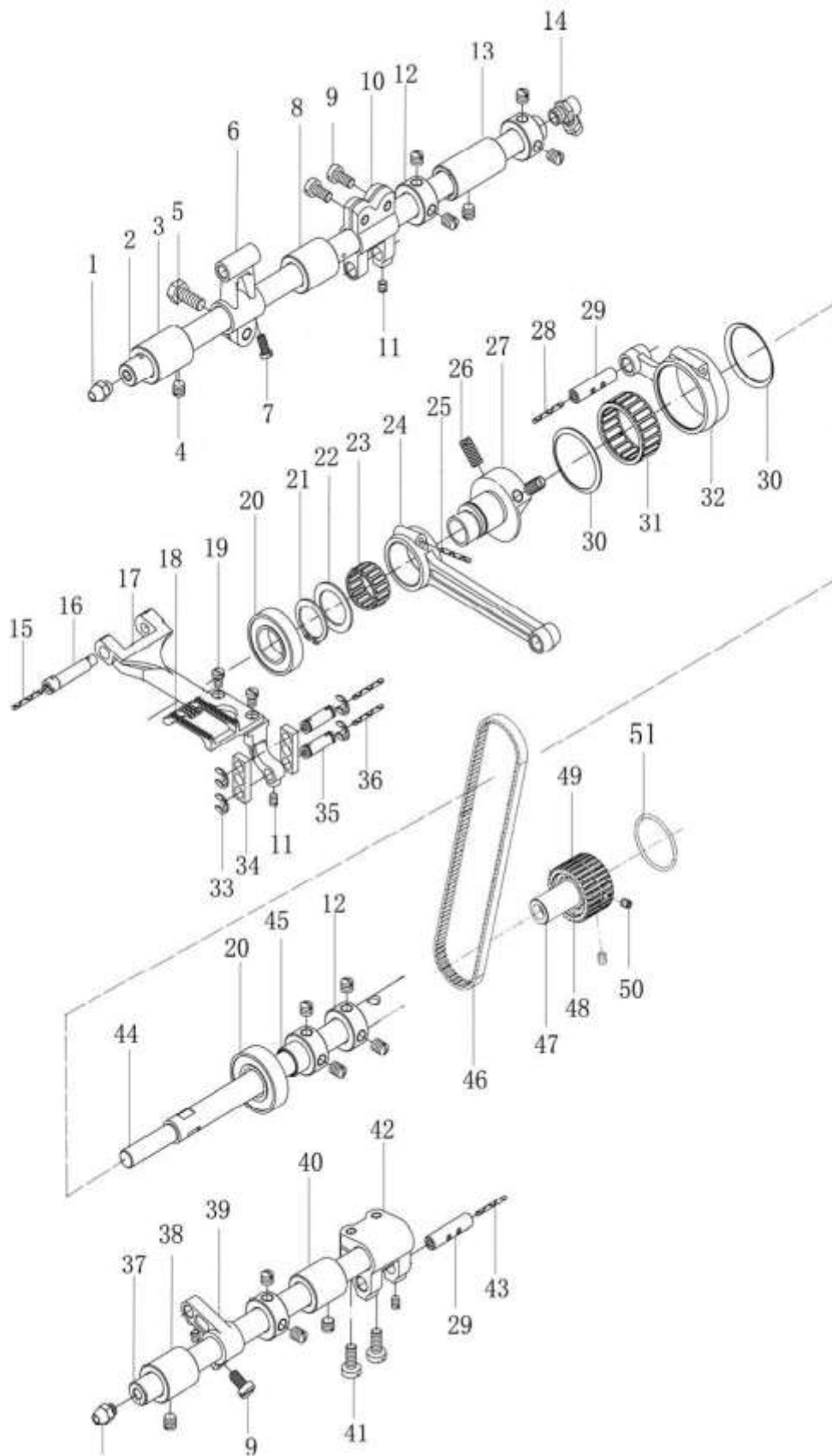
G. STITCH LENGTH ADJUSTMENT AND BACKSTITCH PARTS (2/2)



G. STITCH LENGTH ADJUSTMENT AND BACKSTITCH PARTS (2/2)

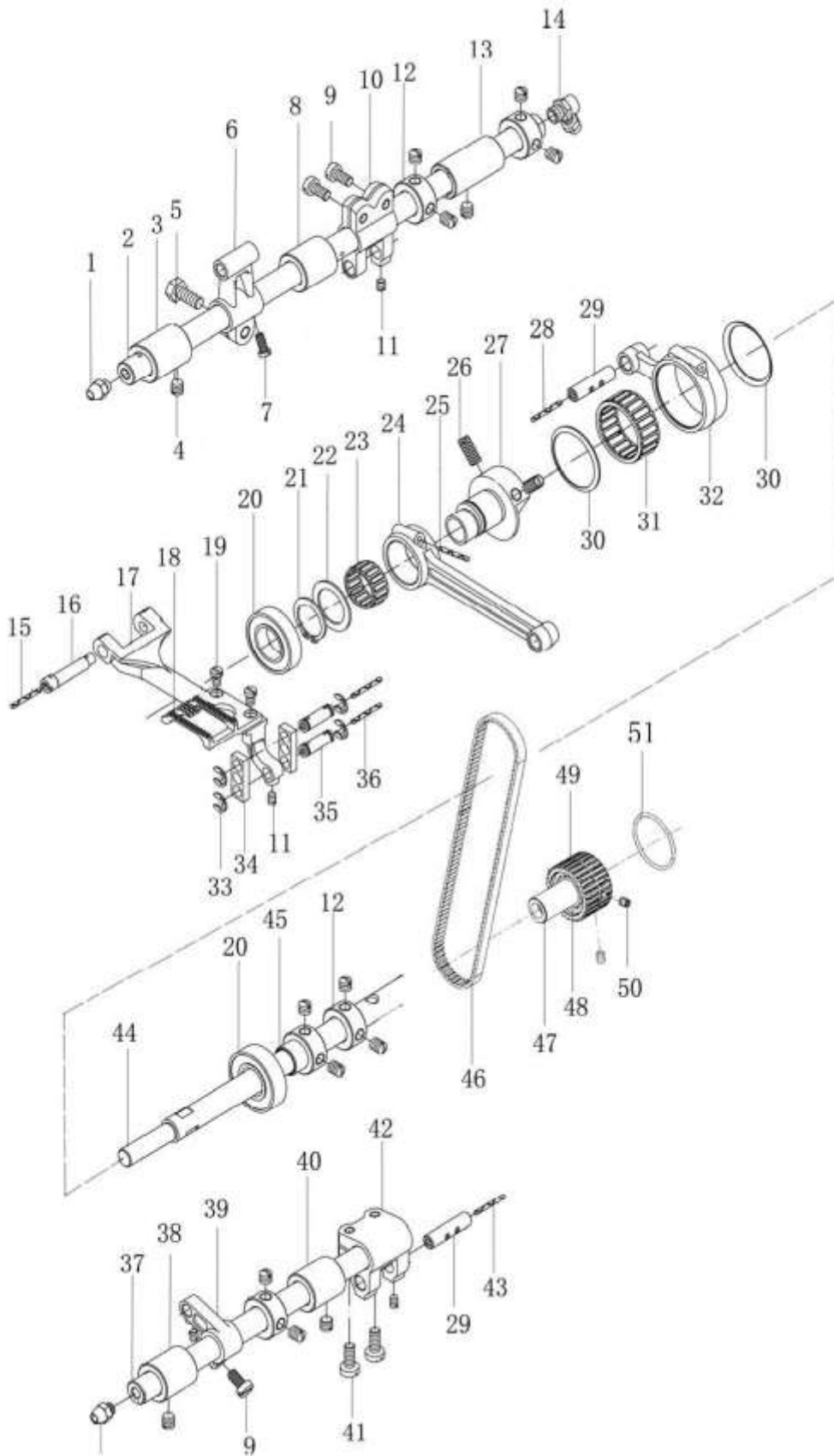
Ref. No	Parts No.	Name of parts	Description	Qty		Note
				14x	44x	
G38	7.02.15.447	Backstitch block tighten screw	M4x6	1	1	
G39	7.02.15.436	Backstitch cam crank screw	M5x30	1	1	
G40	7.02.19.037	Switch		1	1	
G41	7.02.15.1080	Screw		2	2	
G42	7.02.07.197	Gear		2	2	

H. LOWER SHAFT, FEED DOG AND PRESSER FOOT LIFTING PARTS (1/2)



H. LOWER SHAFT, FEED DOG AND PRESSER FOOT LIFTING PARTS (1/2)						
Ref. No	Parts No.	Name of parts	Description	Qty		Note
				14x	44x	
H01	7.02.16.067	Oil spile		2	2	
H02	7.02.03.079	Feed shaft		1	1	
H03	7.02.08.103	Feed shaft bushing (left)		1	1	
H04	7.02.15.428	Bushing screw	M6(0.75)x5	12	14	
H05	7.02.15.448	Feed crank (left) screw	M6x14	1	1	
H06	7.02.05.081	Feed crank (left)		1	1	
H07	7.02.15.408	Feed dog holder adjusting pin screw	M4x8	1	1	
H08	7.02.08.104	Feed shaft bushing (middle)		1	1	
H09	7.02.15.430	Feed crank (right) screw	M5x10	3	3	
H10	7.02.06.038	Feed crank (right)		1	1	
H11	7.02.15.391	Feed crank pin screw	M4x5	4	4	
H12	7.02.09.030	Collar		3	4	
H13	7.02.08.105	Feed shaft bushing (right)		1	1	
H14	7.02.16.072	Oil spile (big)		1	1	
H15		Feed dog holder adjusting pin oil wick	∅2x160mm	2	2	
H16	7.02.10.097	Feed dog holder adjusting pin		1	1	
H17	7.02.02.090	Feed dog holder		1	1	
H18	7.02.02.087	Feed dog			1	
	7.02.02.081	Feed dog		1		
H19	7.02.15.433	Feed dog screw	M4x6	2	2	
H20	7.02.04.015	Lifting feed dog cam bearing		2	2	
H21	7.02.18.079	Elastic stop ring	GB/T894.1-1986-18	1	1	
H22	7.02.18.080	Washer		1	1	
H23	7.02.04.030	Lifting feed dog cam link lever bearing		1	1	
H24	7.02.05.082	Lifting feed dog cam link lever		1	1	
H25		Lifting feed dog cam link lever oil wick	∅2x350mm	1	1	
H26	7.02.15.050	Lifting feed dog cam screw	M6(0.75)x8	2	2	
H27	7.02.07.055	Lifting feed dog cam		1	1	
H28		Backstitch cam link lever oil wick	∅2x200mm	1	1	
H29	7.02.10.096	Feed crank pin		2	2	
H30	7.02.18.082	Bearing washer		2	2	
H31	7.02.04.029	Backstitch cam link lever bearing		1	1	
H32	7.02.05.083	Backstitch cam link lever		1	1	
H33	7.02.18.039	E-ring	GB/T896-1986-5	4	4	
H34	7.02.11.065	Connection plate		2	2	
H35	7.02.10.095	Lifting feed dog link lever pin		2	2	

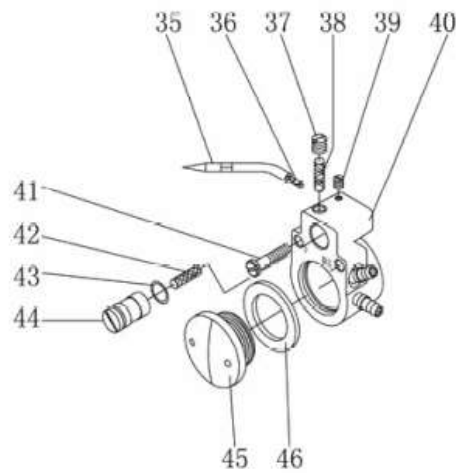
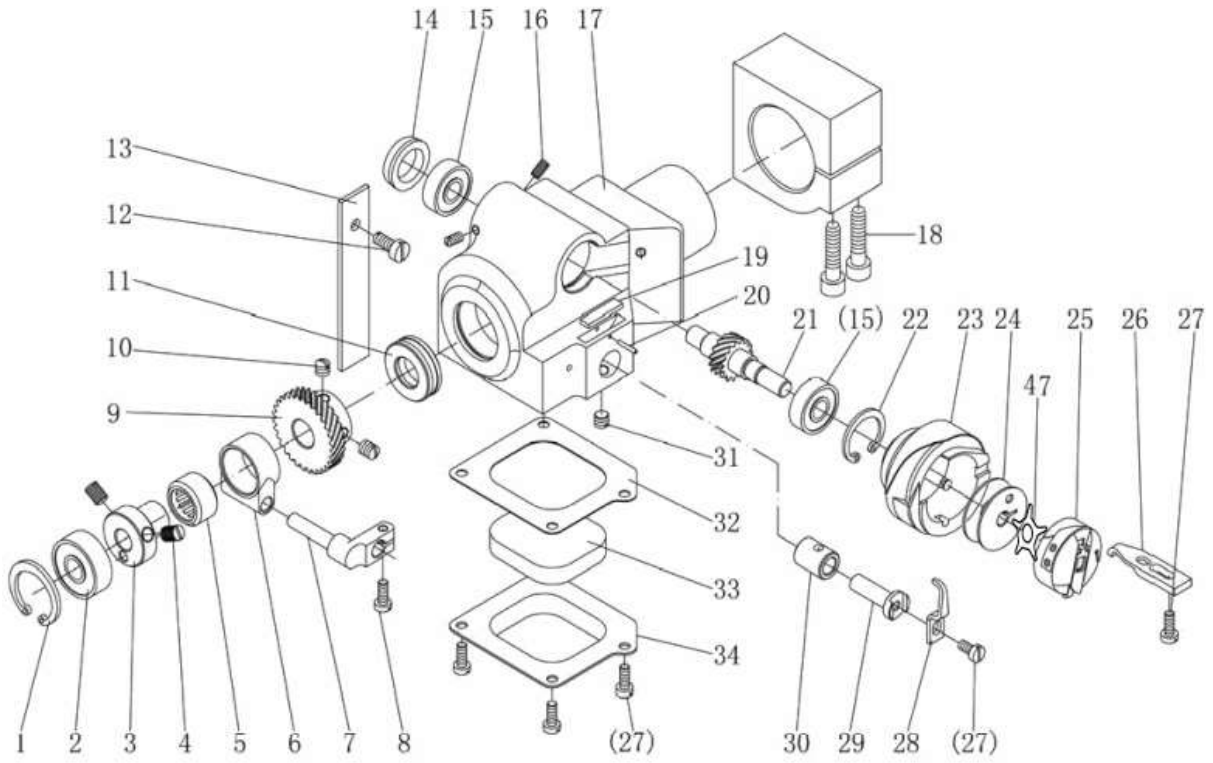
H. LOWER SHAFT, FEED DOG AND PRESSER FOOT LIFTING PARTS (2/2)



H. LOWER SHAFT, FEED DOG AND PRESSER FOOT LIFTING PARTS (2/2)

Ref. No	Parts No.	Name of parts	Description	Qty		Note
				14x	44x	
H36		Lifting feed dog link lever pin oil wick	ø2x60mm	1	1	
H37	7.02.03.080	Lifting feed shaft		1	1	
H38	7.02.08.108	Lifting feed dog shaft bushing (left)		1	1	
H39	7.02.05.084	Lifting feed dog crank (left)		1	1	
H40	7.02.08.109	Lifting feed dog shaft bushing (right)		1	1	
H41	7.02.15.389	Lifting feed dog crank (right) screw	M5x14	2	2	
H42	7.02.06.040	Lifting feed dog crank (right)		1	1	
H43		Lifting feed dog crank pin oil wick	ø2x30mm	1	1	
H44	7.02.03.494	Lower shaft		1	1	
H45	7.02.08.107	Lower shaft bearing bushing		1	1	
H46	7.02.07.198	Synchronous belt		1	1	
H47	7.02.08.366	Bearing connection bushing		1	1	
H48	7.02.04.024	Lower shaft bearing		1	1	
H49	7.02.07.196	Synchronous pulley (lower)		1	1	
H50	7.02.15.057	Synchronous pulley screw	M6x1x8	2	2	
H51	7.02.09.036	Synchronous pulley isolating ring		1	1	

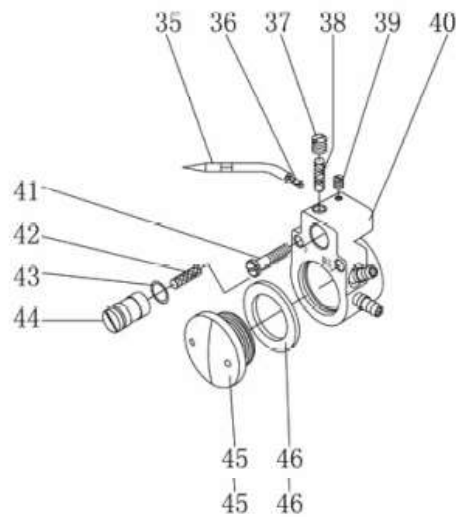
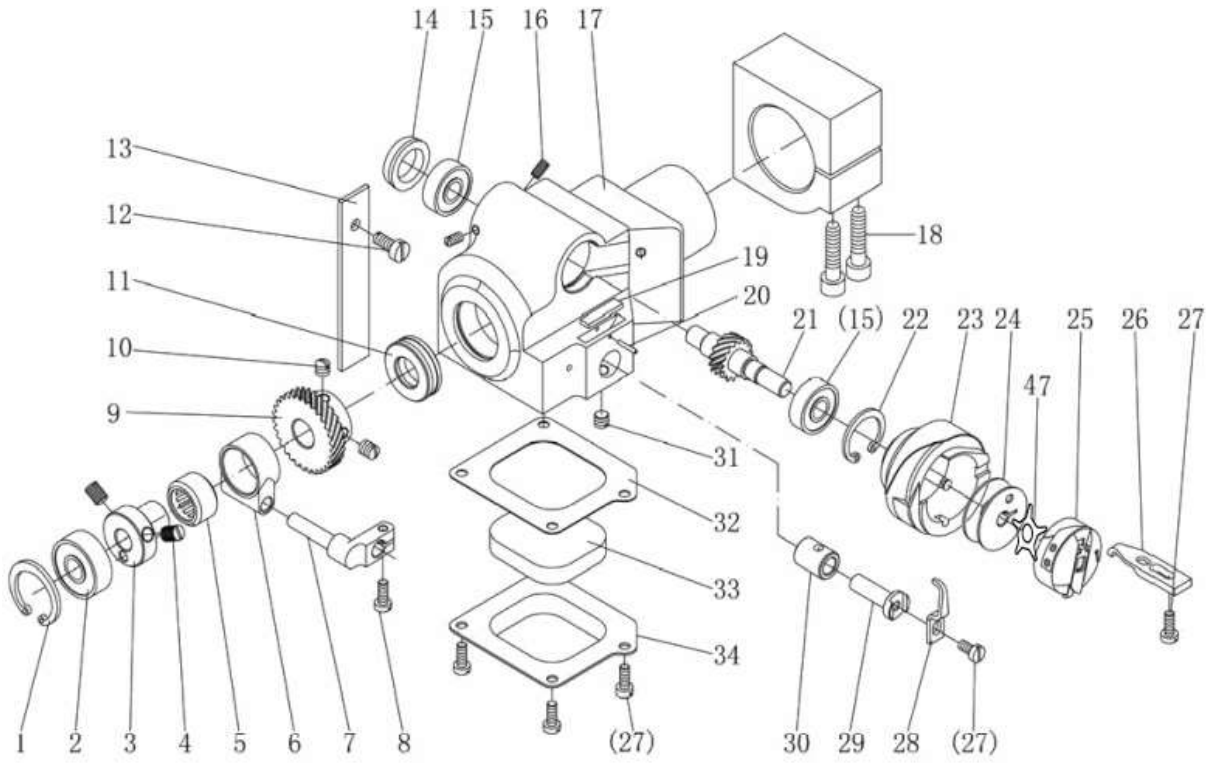
I. HOOK ASSEMBLY FOR GZ-5525-44X AND GZ-5527-44X (1/2)



I. HOOK ASSEMBLY FOR GZ-5525-44X AND GZ-5527-44X (1/2)

Ref. No	Parts No.	Name of parts	Description	Qty		Note
				14x	44x	
I01	7.02.18.026	Elastic stop ring	GB/T893.1-1986-26		1	
I02	7.02.04.031	Bearing			1	
I03	7.02.06.041	Opener cam			1	
I04	7.02.15.434	Opener cam screw	M6(0.75)x7		2	
I05	7.02.04.033	Opener cam bearing			1	
I06	7.02.08.112	Opener cam bushing			1	
I07	7.02.08.111	Hook opener			1	
I08	7.02.15.017	Hook opener screw	M4x10		1	
I09	7.02.07.058	Hook drive gear			1	
I10	7.02.15.126	Drive gear screw	1/4(40)x7		2	
I11	7.02.04.026	Bearing			1	
I12	7.02.15.439	Felt fixed screw	M5x8		1	
I13	7.02.16.051	Felt			1	
I14	7.02.09.031	Hook saddle bearing cover			1	
I15	7.02.04.016	Bearing			2	
I16	7.02.15.438	Bearing cover screw	M4(0.5)x7		2	
I17	7.02.13.046	Hook saddle			1	
I18	7.02.15.445	Hook saddle fixed screw	M6x25		2	
I19		Felt			1	
I20	7.02.10.098	Elastic pin			1	
I21	7.02.07.057	Hook gear			1	
I22	7.02.18.027	Elastic stop ring	GB/T893.1-1986-22		1	
I23	P980008250	Hook			1	
I24	7.02.21.144	Bobbin			1	
I25	P980081133	Bobbin case [GZ-552x-x43]				
	P980081133NBL	Bobbin case [GZ-552x-x47]			1	
I26	7.02.02.094	Hook orientation claw			1	
I27	7.02.15.006	Hook orientation claw screw	M4x8		5	
I28	7.02.02.091	Hook thread distributing claw			1	
I29	7.02.10.099	Hook thread distributing bracket			1	
I30	7.02.08.110	Hook thread distributing bracket bushing			1	
I31	7.02.15.440	Bushing tighten screw	M6(0.75)x3.5		1	
I32	7.02.18.084	Hook saddle bottom cover washer			1	
I33	7.02.16.094	Felt			1	
I34	7.02.13.047	Hook saddle bottom cover			1	
I35	7.02.16.075	Hook coppery oil tube			1	

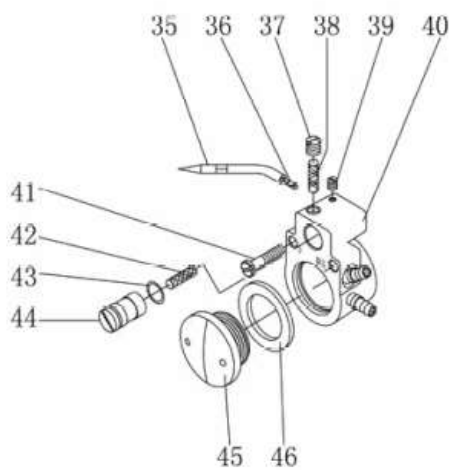
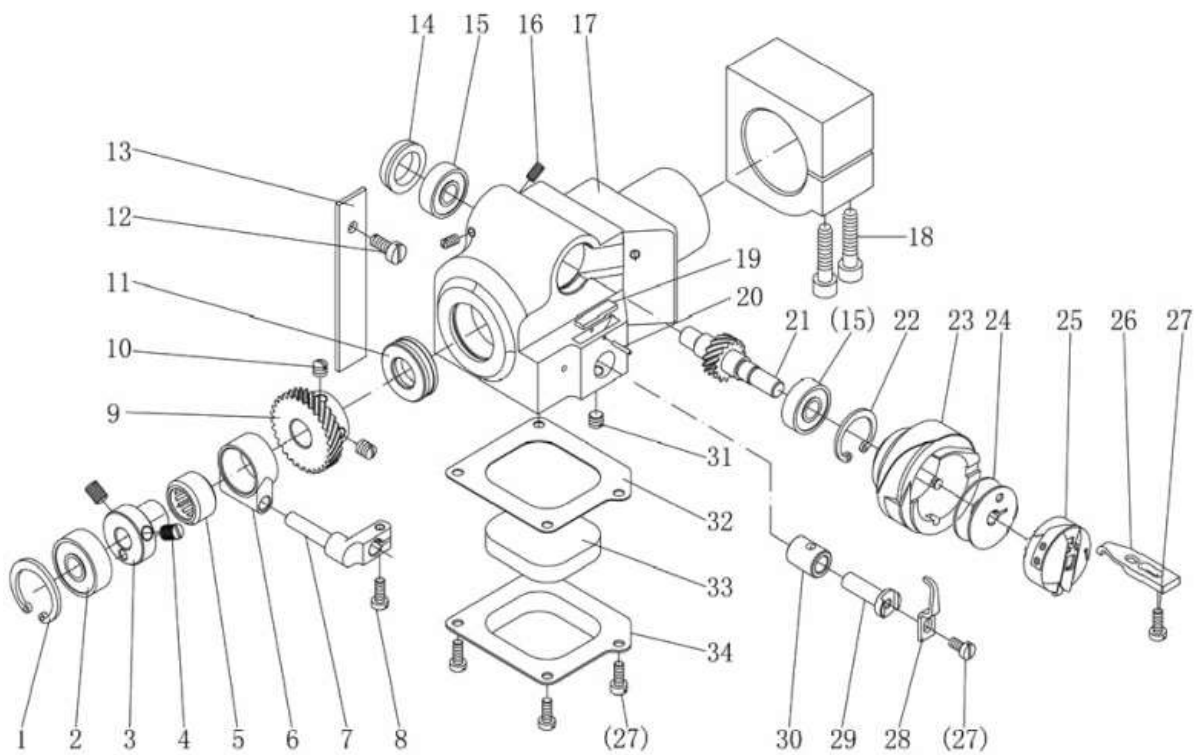
I. HOOK ASSEMBLY FOR GZ-5525-44X AND GZ-5527-44X (2/2)



I. HOOK ASSEMBLY FOR GZ-5525-44X AND GZ-5527-44X (2/2)

Ref. No	Parts No.	Name of parts		Qty		Note
				14x	44x	
I36		Hook oil wick			1	
I37	7.02.15.441	Oil seal screw	M6x5		1	
I38		Oil box felt			1	
I39	7.02.15.406	Coppery oil tube tighten screw	M3x4		1	
I40	7.02.13.048	Hook saddle oil box			1	
I41	7.02.15.442	Oil box screw	M4x25		1	
I42	7.02.16.451	Oil quantity adjusting valve felt			1	
I43		Oil quantity adjusting valve o-ring			1	
I44		Oil quantity adjusting valve			1	
I45	7.02.16.069	Oil window cover			1	
I46	7.02.16.071	Oil window cover washer			1	
I47	130.08.612	Brake spring [GZ-552x-x43]			1	

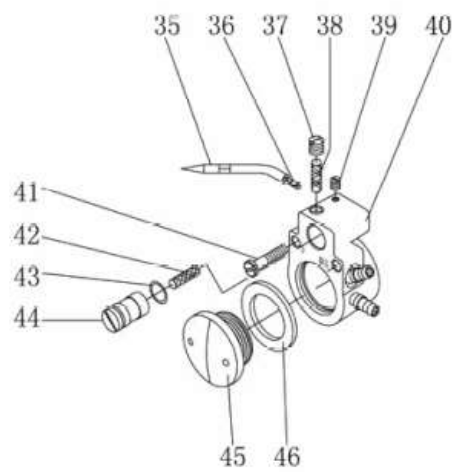
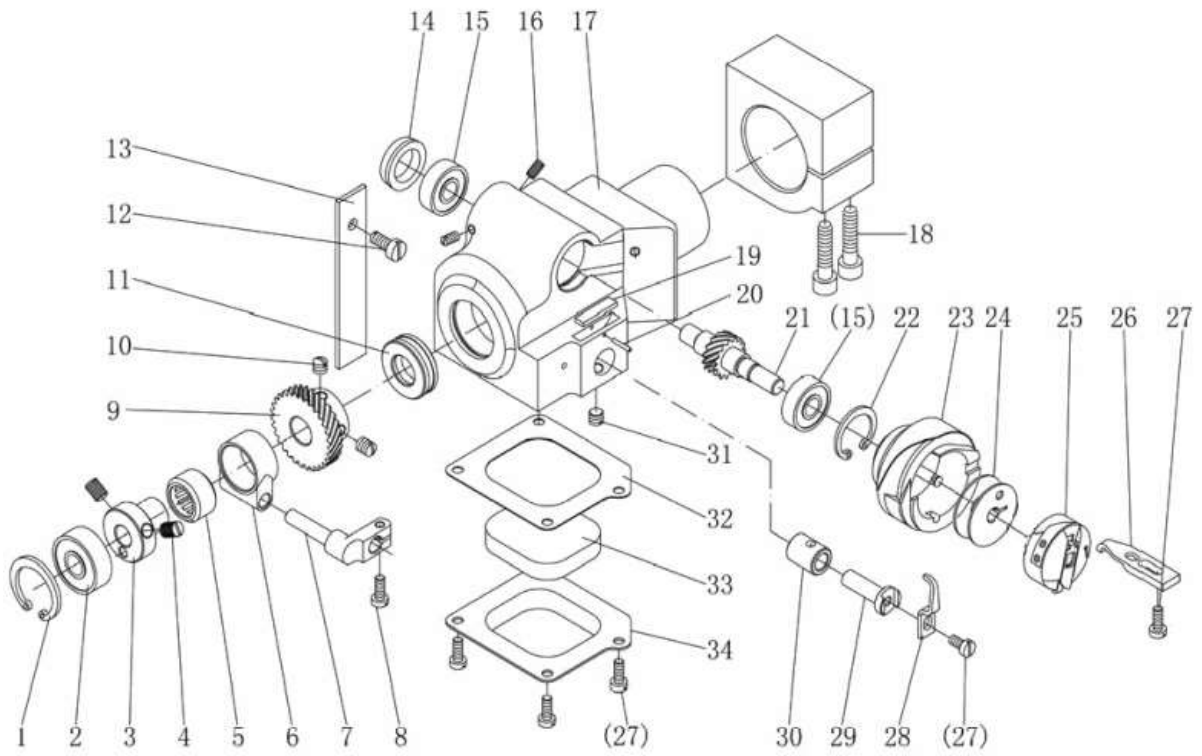
J. HOOK ASSEMBLY FOR GZ-5525-14X AND GZ-5527-14X (1/2)



J. HOOK ASSEMBLY FOR GZ-5525-14X AND GZ-5527-14X (1/2)

Ref. No	Parts No.	Name of parts	Description	Qty		Note
				14x	44x	
J01	7.02.18.026	Elastic stop ring	GB/T893.1-1986-26	1		
J02	7.02.04.031	Bearing		1		
J03	7.02.06.093	Opener cam		1		
J04	7.02.15.434	Opener cam screw	M6(0.75)x7	2		
J05	7.02.04.033	Opener cam bearing		1		
J06	7.02.08.112	Opener cam bushing		1		
J07	7.02.08.111	Hook opener		1		
J08	7.02.15.017	Hook opener screw	M4x10	1		
J09	7.02.07.072	Hook drive gear		1		
J10	7.02.15.126	Drive gear screw	1/4(40)x7	2		
J11	7.02.04.026	Bearing		1		
J12	7.02.15.439	Felt fixed screw	M5x8	1		
J13	7.02.16.051	Felt		1		
J14	7.02.09.037	Hook saddle bearing cover		1		
J15		Bearing		2		
J16	7.02.15.438	Bearing cover screw	M4(0.5)x7	2		
J17	7.02.13.077	Hook saddle		1		
J18	7.02.15.445	Hook saddle fixed screw	M6x25	2		
J19		Felt		1		
J20	7.02.10.098	Elastic pin		1		
J21	7.02.07.073	Hook gear		1		
J22	7.02.18.167	Elastic stop ring	GB/T893.1-1986-24	1		
J23	7.02.02.111	Hook		1		
J24	7.02.21.239	Bobbin		1		
J25	7.02.02.112	Bobbin case		1		
J26	7.02.02.113	Hook orientation claw		1		
J27	7.02.15.006	Hook orientation claw screw	M4x8	5		
J28	7.02.02.114	Hook thread distributing claw		1		
J29	7.02.10.099	Hook thread distributing bracket		1		
J30	7.02.08.110	Hook thread distributing bracket bushing		1		
J31	7.02.15.440	Bushing tighten screw	M6(0.75)x3.5	1		
J32	7.02.18.084	Hook saddle bottom cover washer		1		
J33	7.02.16.094	Felt		1		
J34	7.02.13.047	Hook saddle bottom cover		1		
J35	7.02.16.075	Hook coppery oil tube		1		
J36		Hook oil wick		1		
J37	7.02.15.441	Oil seal screw	M6x5	1		

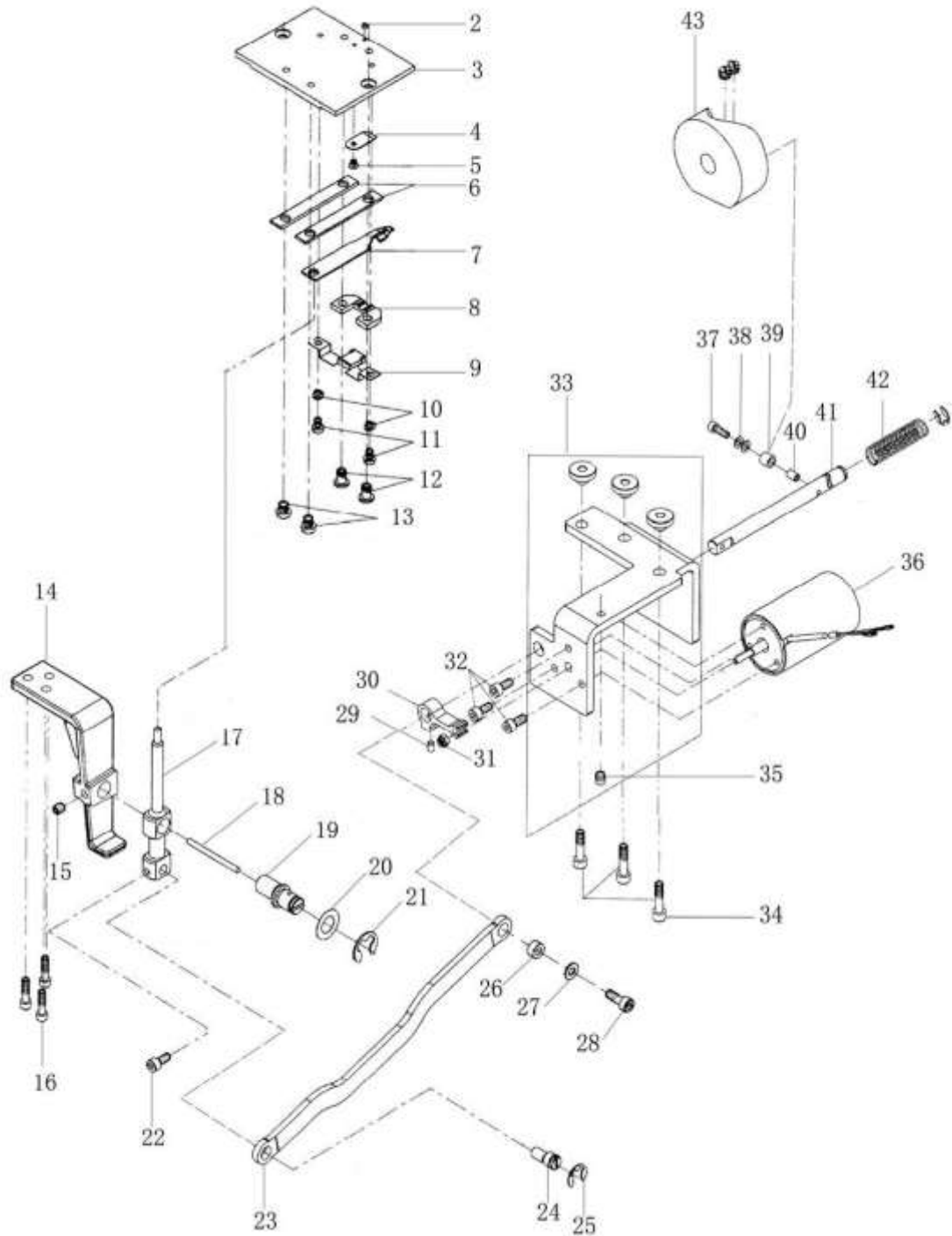
J. HOOK ASSEMBLY FOR GZ-5525-14X AND GZ-5527-14X (2/2)



J. HOOK ASSEMBLY FOR GZ-5525-14X AND GZ-5527-14X (2/2)

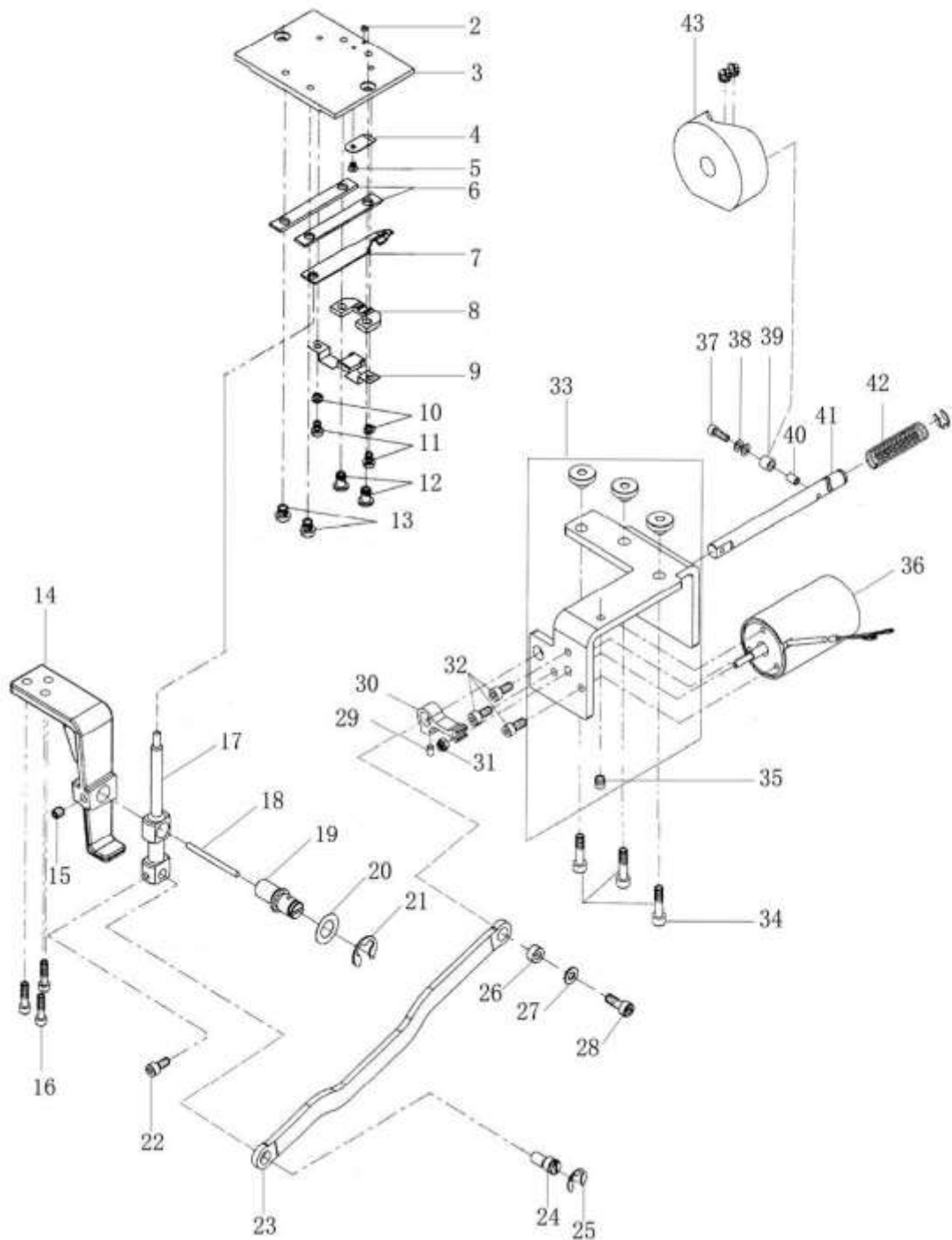
Ref. No	Parts No.	Name of parts	Description	Qty		Note
				14x	44x	
J38		Oil box felt		1		
J39	7.02.15.406	Coppery oil tube tighten screw	M3x4	1		
J40	7.02.13.048	Hook saddle oil box		1		
J41	7.02.15.442	Oil box screw	M4x25	1		
J42	7.02.16.451	Oil quantity adjusting valve felt		1		
J43		Oil quantity adjusting valve o-ring		1		
J44		Oil quantity adjusting valve		1		
J45	7.02.16.069	Oil window cover		1		
J46	7.02.16.071	Oil window cover washer		1		

K. THREAD TRIMMING PARTS (1/2)



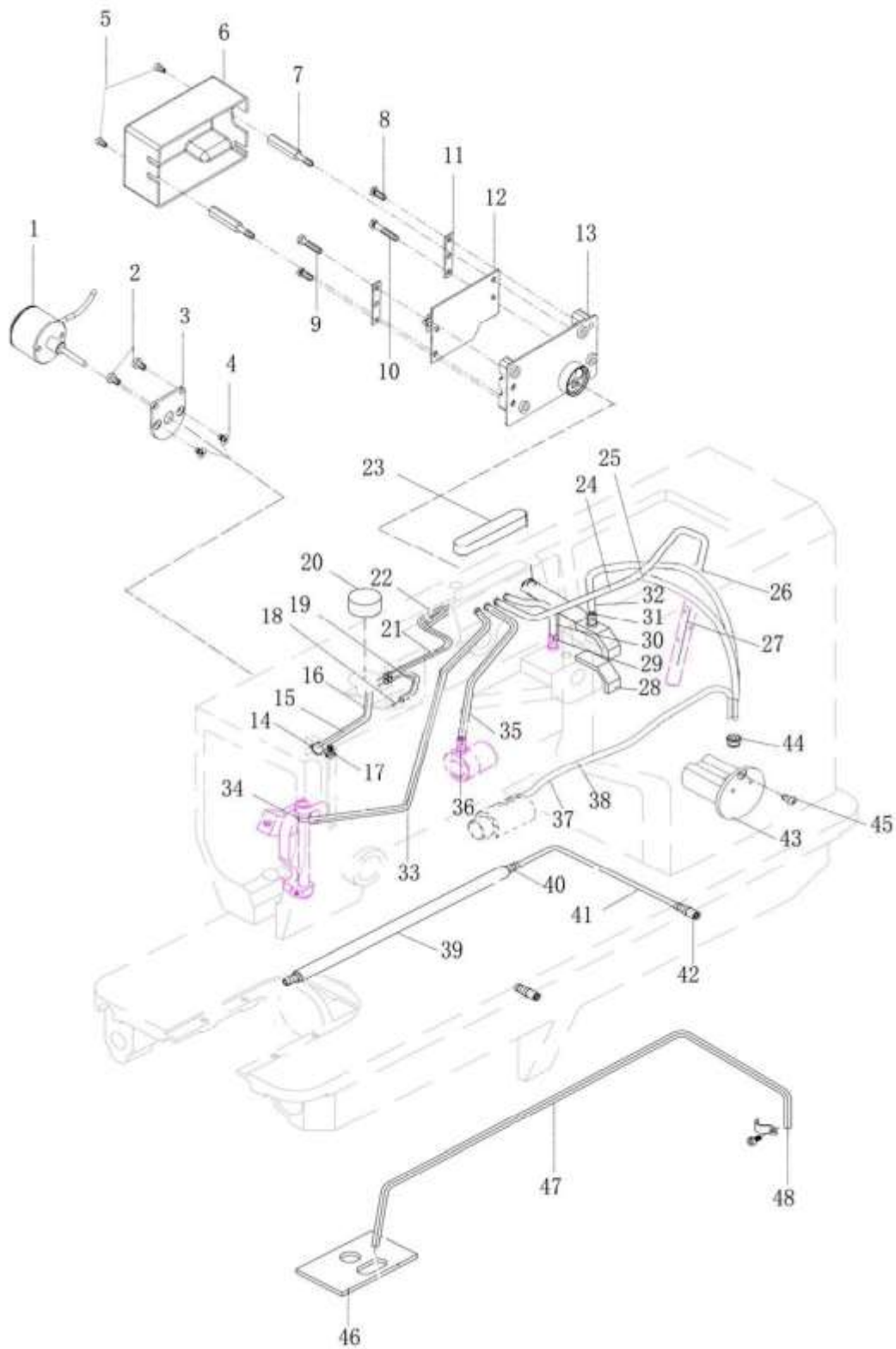
K. THREAD TRIMMING PARTS (1/2)						
Ref. No	Parts No.	Name of parts	Description	Qty		Note
				14x	44x	
K02	7.02.15.104	Screw		1	1	
K03	7.02.02.073	Slide plate		1	1	
K04	7.02.20.031	Fixed knife		1	1	
K05	7.02.15.103	Fixed knife screw		1	1	
K06	7.02.11.102	Movable knife guide plate		2	2	
K07	7.02.20.030	Movable knife		1	1	
K08	7.02.11.103	Movable knife support plate		1	1	
K09	7.02.11.098	Movable knife assistant support plate		1	1	
K10	7.02.18.061	Spring washer	GB/T93.3	2	2	
K11	7.02.15.101	Movable knife assistant support plate	M3x4	2	2	
K12	7.02.15.102	Movable knife support plate screw	M4x6.5	2	2	
K13	7.02.15.100	Movable knife guide plate screw	M4x4	2	2	
K14	7.02.13.074	Thread trimming vibrating lever socket		1	1	
K15	7.02.15.056	Thread trimming vibrating lever eccentric pin screw	M5x5	1	1	
K16	7.02.15.053	Thread trimming vibrating lever socket setting screw	M5x12	3	3	
K17	7.02.05.515	Thread trimming vibrating lever		1	1	
K18		Oil wick	M4x8	1	1	
K19	7.02.10.305	Pin		1	1	
K20	7.02.18.402	Washer		1	1	
K21	7.02.21.085	E-ring	ø9	1	1	
K22	7.02.15.555	Screw	M4x8	1	1	
K23	7.02.05.514	Thread trimming link lever		1	1	
K24	7.02.10.306	Eccentric pin		1	1	
K25	7.02.18.021	E-ring	ø7	2	2	
K26	7.02.08.365	Thread trimming link lever bushing		1	1	
K27	7.02.18.071	Washer		1	1	
K28	7.02.15.577	Screw	M4x12	1	1	
K29	7.02.15.596	Screw	M6x1×6	3	3	
K30	7.02.12.083	Stopper block		1	1	
K31		Thread trimming electromagnetic nut	M5	1	1	
K32	7.02.15.803	Screw	M5x10	3	3	
K33	7.02.13.442	Thread trimming setting bracket		1	1	
K34	7.02.15.058	Thread trimming setting bracket screw	M5x16	3	3	
K35	7.02.15.057	Screw	M6x1×8	1	1	

K. THREAD TRIMMING PARTS (2/2)



K. THREAD TRIMMING PARTS (2/2)						
Ref. No	Parts No.	Name of parts	Description	Qty		Note
				14x	44x	
K36	7.02.19.038	Thread trimming electromagnetic		1	1	
K37	7.02.15.1034	Screw		1	1	
K38	7.02.18.403	Washer		2	2	
K39	7.02.08.363	Thread trimming bushing 2		1	1	
K40	7.02.08.364	Thread trimming bushing 1		1	1	
K41	7.02.03.495	Thread trimming shaft		1	1	
K42	7.02.17.092	Spring		1	1	
K43	7.02.06.086	Thread trimming cam		1	1	

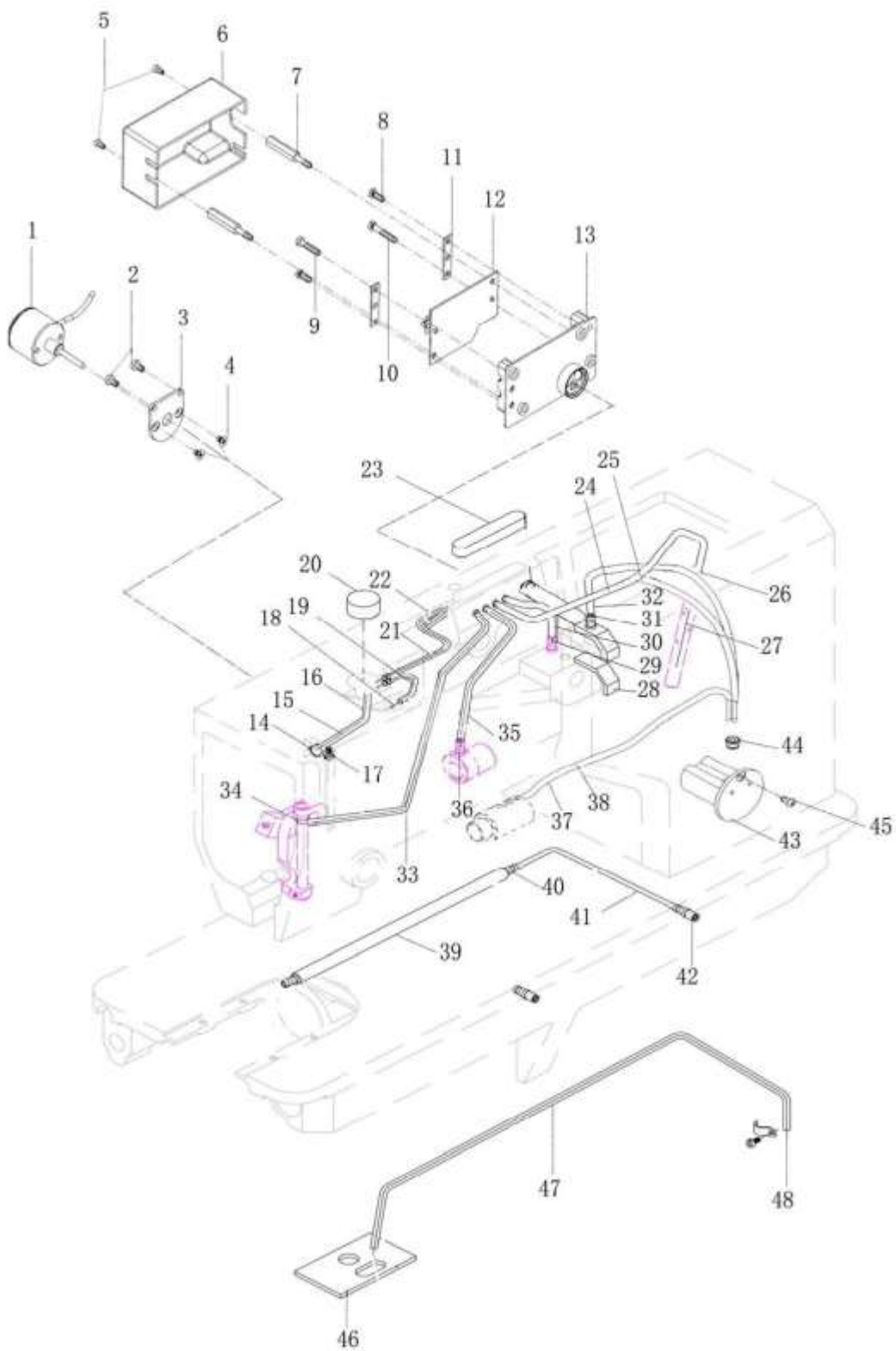
L. TENSION RELEASE, ELECTROCIRCUIT BOARD, OIL CIRCUIT PARTS (1/2)



L. TENSION RELEASE, ELECTROCIRCUIT BOARD, OIL CIRCUIT PARTS (1/2)

Ref. No	Parts No.	Name of parts	Description	Qty		Note
				14x	44x	
L01	7.02.19.039	Thread releasing solenoid		1	1	
L02	7.02.15.1080	Screw		2	2	
L03	7.02.11.594	Mounting plate		1	1	
L04	7.02.15.797	Screw		2	2	
L05	7.02.15.976	Screw		2	2	
L06	7.02.16.505	Collection circuit board housing		1	1	
L07	7.02.15.1083	Support screw		2	2	
L08	7.02.15.017	Pressure plate screw		2	2	
L09		Pressure plate screw		1	1	
L10	7.02.15.442	Pressure plate screw		1	1	
L11	7.02.11.595	Thread tension plate		2	2	
L12	7.02.11.596	Circuit board		1	1	
L13	7.02.16.506	Circuit collection plate		1	1	
L14	7.02.17.029	Oil tube clip		2	2	
L15		Oil wick	ø2x140 mm	1	1	
L16		Oil tube	ø3/ø5x65 mm	1	1	
L17	7.02.15.037	Oil tube clip screw	M3x6	2	2	
L18		Oil wick	ø2x150 mm	1	1	
L19		Oil tube	ø3/ø5x70 mm	1	1	
L20	7.02.16.032	Felt	ø16x12	2	2	
L21		Oil wick	ø3x200 mm	1	1	
L22		Oil tube	ø3/ø5x110 mm	1	1	
L23	7.02.16.034	Felt		1	1	
L24		Oil wick	ø2x250 mm	1	1	
L25		Oil tube	ø3/ø5x300 mm	1	1	
L26		Oil tube	ø3/ø5x200 mm	1	1	
L27		Oil wick	ø2x300 mm	1	1	
L28	7.02.16.092	Felt		1	1	
L29		Oil wick	ø2x160 mm	1	1	
L30		Oil tube	ø3/ø5x100 mm	1	1	
L31		Oil wick	ø2x180 mm	1	1	
L32		Oil tube	ø3/ø5x100 mm	1	1	
L33		Oil tube	ø3/ø5x200 mm	1	1	
L34		Oil wick	ø2x250 mm	1	1	
L35		Oil tube	ø3/ø5x130 mm	1	1	
L36		Oil wick	ø2x200 mm	1	1	
L37		Oil tube	ø3/ø5x320 mm	1	1	
L38		Oil wick	ø2x370 mm	1	1	

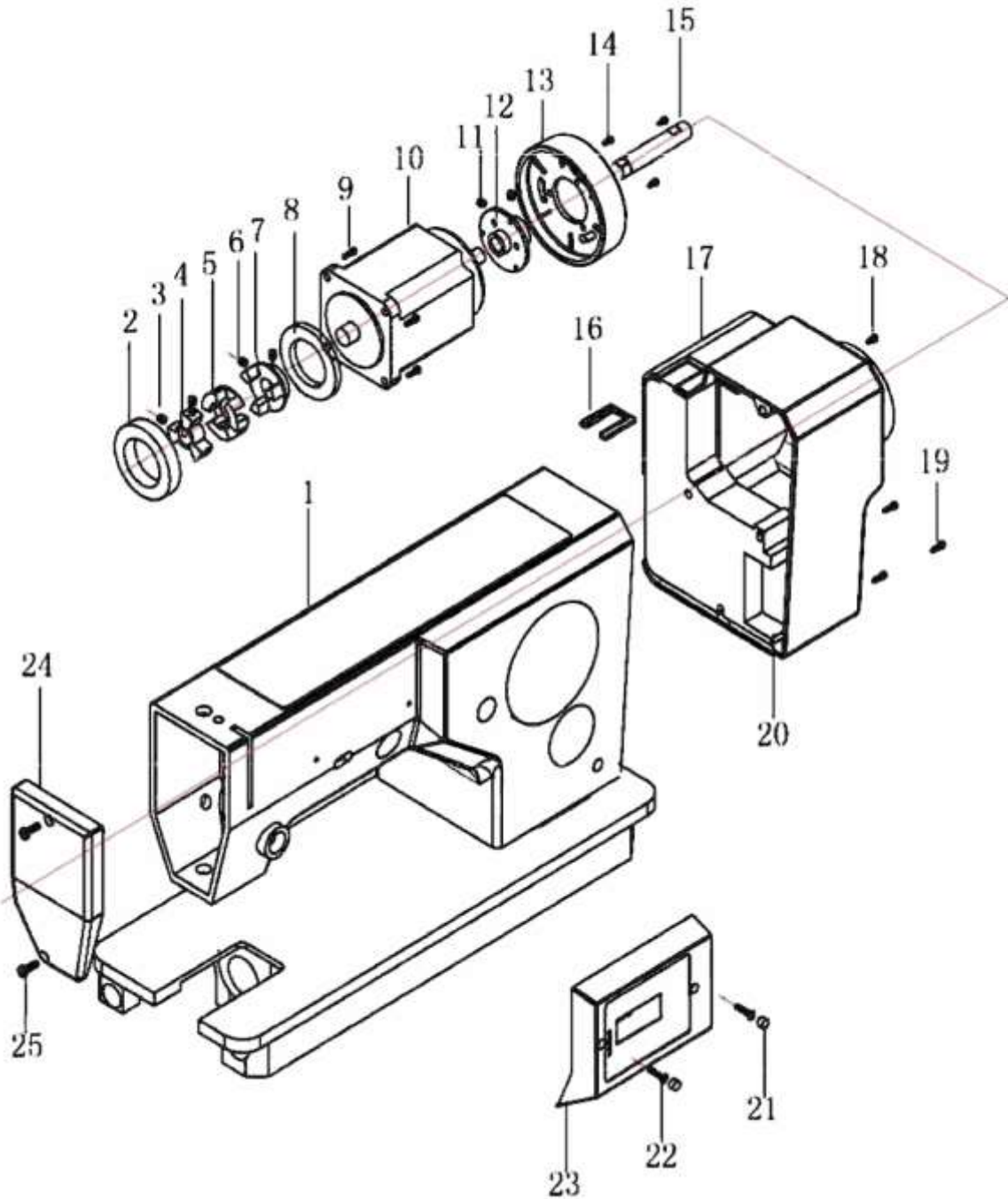
L. TENSION RELEASE, ELECTROCIRCUIT BOARD, OIL CIRCUIT PARTS (2/2)



L. TENSION RELEASE, ELECTRO-CIRCUIT BOARD, OIL CIRCUIT PARTS (2/2)

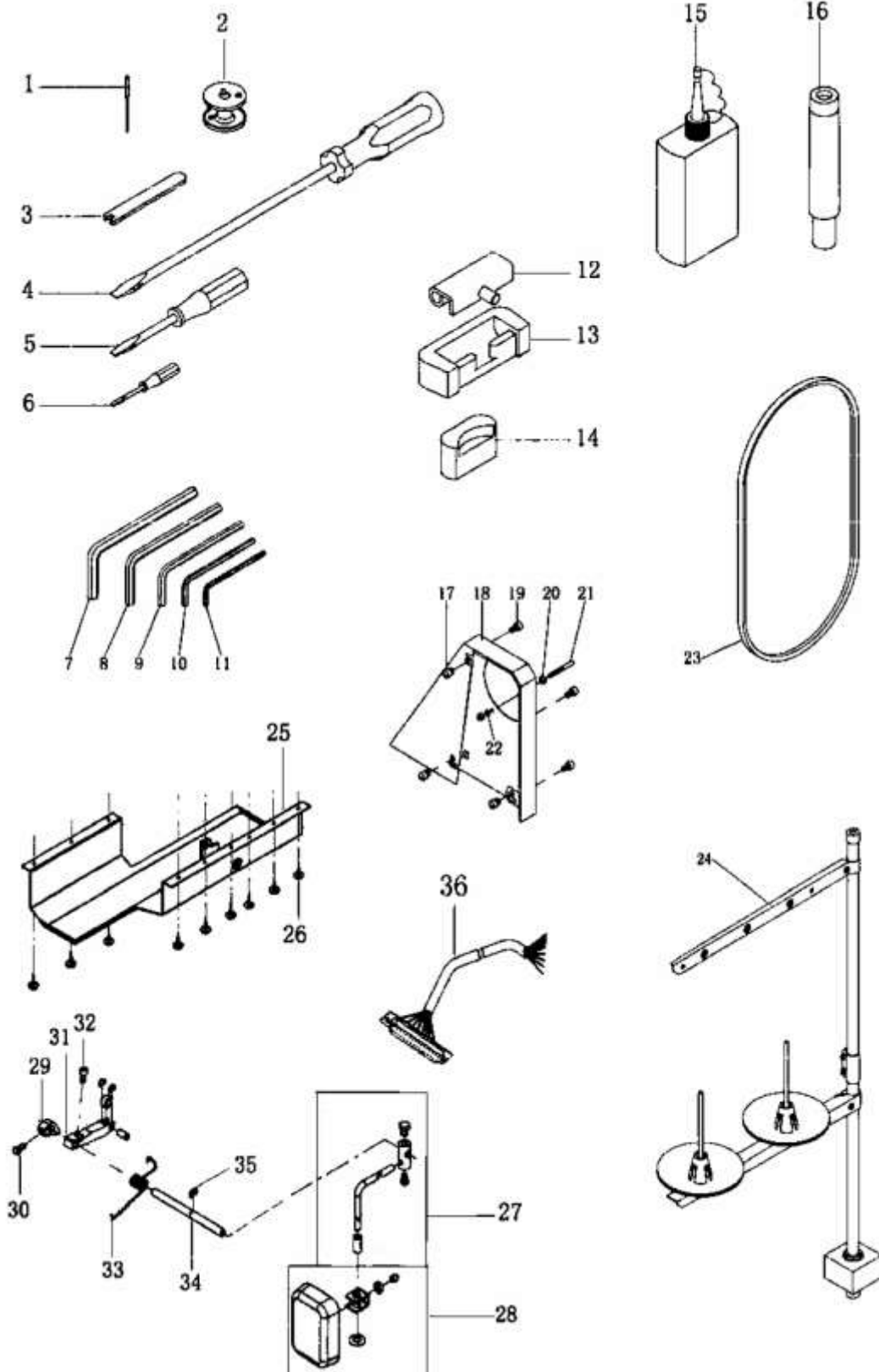
Ref. No	Parts No.	Name of parts	Description	Qty		Note
				14x	44x	
L39	7.02.16.073	Coppery oil tube		1	1	
L40	7.02.16.060	Oil spile		2	2	
L41		Oil tube	ø3/ø5x50mm	1	1	
L42	7.02.16.059	Oil spile		2	2	
L43	7.02.16.507	Oil box		1	1	
L44	7.02.16.508	Oil box plug		1	1	
L45	7.02.15.1080	Screw		1	1	
L46	7.02.16.091	Felt		1	1	
L47		Oil tube	ø3/ø5x600mm	1	1	
L48		Oil wick	ø2x640mmx2	1	1	

M. AUTOMATIC DRIVE PARTS



M. AUTOMATIC DRIVE PARTS						
Ref. No	Parts No.	Name of parts	Description	Qty		Note
				14x	44x	
M01	7.01.02.030	Machine casting		1	1	
M02	7.02.04.210	Bearing		1	1	
M03	7.02.15.050	Screw	M6x8	3	3	
M04	7.02.08.560	Trident coupling		1	1	
M05	7.02.16.521	Rubber pad		1	1	
M06	7.02.15.051	Screw	M6x8.5	3	3	
M07	7.02.08.561	Motor coupling		1	1	
M08	7.02.09.170	Retaining ring		1	1	
M09	7.02.15.445	Screw	M6x25	4	4	
M10	7.02.19.401	Motor		1	1	
M11	7.02.15.056	Set screw	M5x5	2	2	
M12	7.02.07.320	Hand wheel bushing		1	1	
M13	7.02.07.321	Hand wheel		1	1	
M14	7.02.15.006	Screw	M4x8	3	3	
M15	7.02.03.510	Upper shaft		1	1	
M16	7.02.16.520	Switch pad		1	1	
M17	7.02.16.523	Rear cover		1	1	
M18	7.02.15.974	Screw	M5x55	2	2	
M19	7.02.15.731	Screw		2	2	
M20	7.02.19.400	Electric control board		1	1	
M21	7.02.16.522	Plug		2	2	
M22	7.02.15.405	Screw	M4x14	2	2	
M23	7.02.11.611	Display plate		1	1	
M24	7.02.11.610	Face plate		1	1	
M25	7.02.15.416	Screw	M5x12	1	1	
M26	7.02.15.096	Screw	M5x16	1	1	

N. ACCESSORIES



N. ACCESSORIES						
Ref. No	Parts No.	Name of parts	Description	Qty		Note
				14x	44x	
N01	7.02.21.140	Needle	19#	4	4	
N02	7.02.21.144	Bobbin			4	
N02	7.02.21.239	Bobbin		4		
N03	7.02.21.142	Open end wrench		1	1	
N04	7.02.21.003	Screw driver(big)		1	1	
N05	7.02.21.002	Screw driver(middle)		1	1	
N06	7.02.21.001	Screw driver(small)		1	1	
N07	7.02.21.238	Hexagonal wrench	6 mm	1	1	
N08	7.02.21.143	Hexagonal wrench	5 mm	1	1	
N09	7.02.21.099	Hexagonal wrench	4 mm	1	1	
N10	7.02.21.209	Hexagonal wrench	3 mm	1	1	
N11	7.02.21.098	Hexagonal wrench	2.5 mm	1	1	
N12	7.02.21.080	Hinge		2	2	
N13	7.02.21.079	Hinge cover		2	2	
N14	7.02.21.291	Vibration preventing rubber		2	2	
N15	7.02.21.008	Small oil pot		1	1	
N16	7.02.21.147	Crosstie		1	1	
N17	7.02.18.077	Rubber pad		3	3	
N18	7.02.21.13601	Belt cover		1	1	
N19	7.02.15.444	Belt cover screw	M6x10	3	3	
N20	7.02.21.138	Nut	M5	2	2	
N21	7.02.21.137	Screw		1	1	
N22	7.02.21.139	Spring washer	GB/T93.5	1	1	
N23	7.02.21.095	Belt		1	1	
N24	7.02.21.050	Thread stand		1	1	
N25	7.02.21.16401	Oil reservoir		1	1	
N26	7.02.21.157	Wooden screw		9	9	
N27	7.02.21.159	Touch block assy.		1	1	
N28	7.02.21.556	Touch block		1	1	
N29	7.02.21.165	Knee lifting orientation block		1	1	
N30	7.02.21.162	Knee lifting orientation block screw		1	1	
N31	7.02.21.153	Roller joint		1	1	
N32		Roller joint screw		1	1	
N33	7.02.21.167	Replacement spring		1	1	
N34	7.02.21.168	Straight lever		1	1	
N35	7.02.18.021	E-ring		1	1	
N36	7.02.21.557	Control system connecting line		1	1	