

Katalog náhradních dílů
Spare Parts List

GARUDAN[®]

GF-1116-147 LM



ANITA B, s.r.o.

Průmyslová 2453/7

680 01 Boskovice

Czech Republic

tel: +420 516 454 774

+420 516 453 496

fax: +420 516 452 751

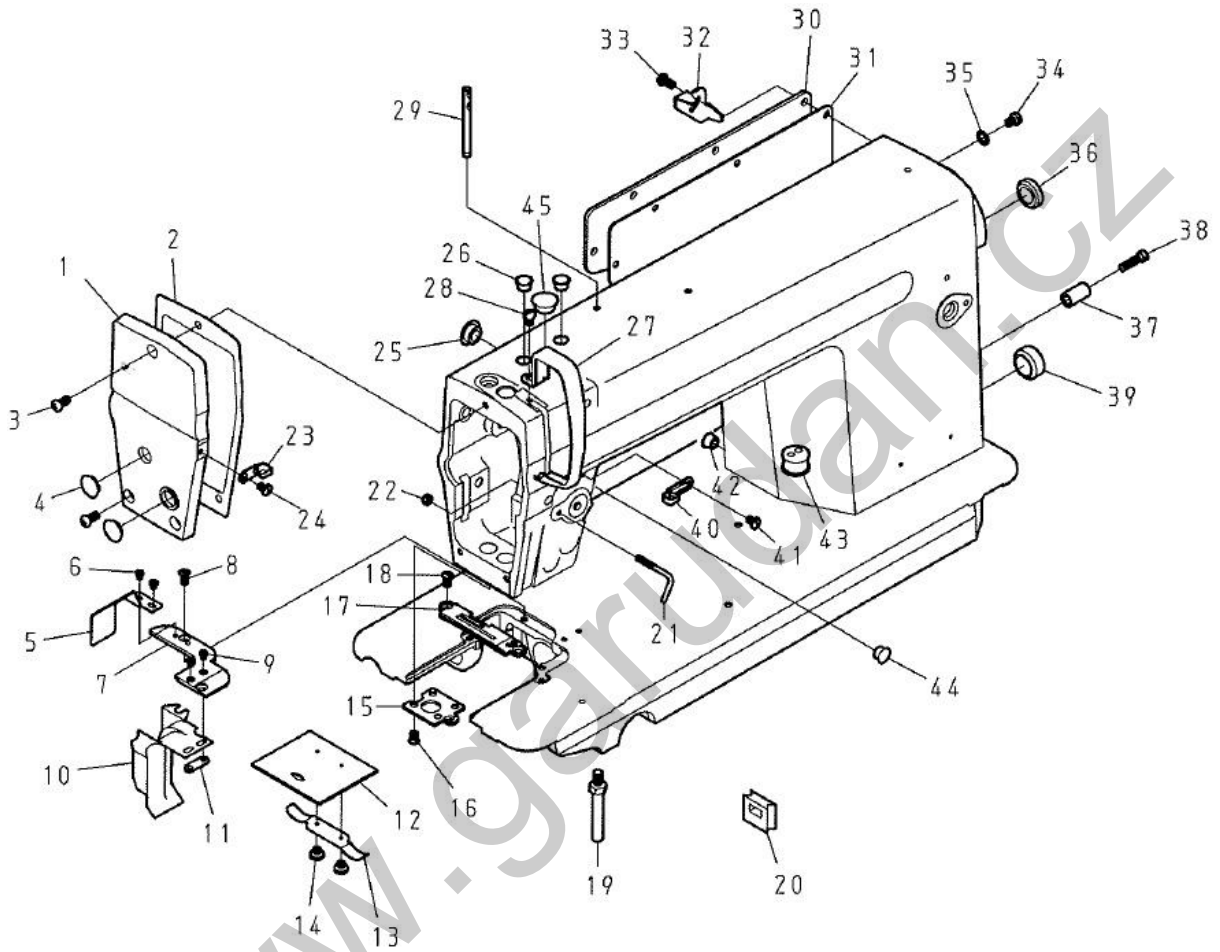
e-mail: info@anita.cz

www.garudan.cz

CONTENT

A. FRAME & MISCELLANEOUS COVER COMPONENTS (1/2)	4
A. FRAME & MISCELLANEOUS COVER COMPONENTS (2/2)	6
B. MAIN SHAFT & THREAD TAKE-UP LEVER COMPONENTS	8
C. NEEDLE BAR & UPRIGHT SHAFT & LOWER SHAFT COMPONENTS	10
D. PRESSURE FOOT MECHANISM COMPONENTS	12
E. LOWER FEED MECHANISM COMPONENTS	14
F. FEED ADJUSTMENT MECHANISM COMPONENTS	16
G. THREAD TRIMMER MECHANISM COMPONENTS (1/2)	18
G. THREAD TRIMMER MECHANISM COMPONENTS (2/2)	20
H. KNIFE COMPONENTS (1/2)	22
H. KNIFE COMPONENTS (2/2)	24
I. AUTOMATIC REVERSE FEED MECHANISM COMPONENTS	26
J. WIPER MECHANISM COMPONENTS	28
K. OIL LUBRICATION MECHANISM COMPONENTS	30
L. ACCESSORIES (1/2)	32
L. ACCESSORIES (2/2)	34

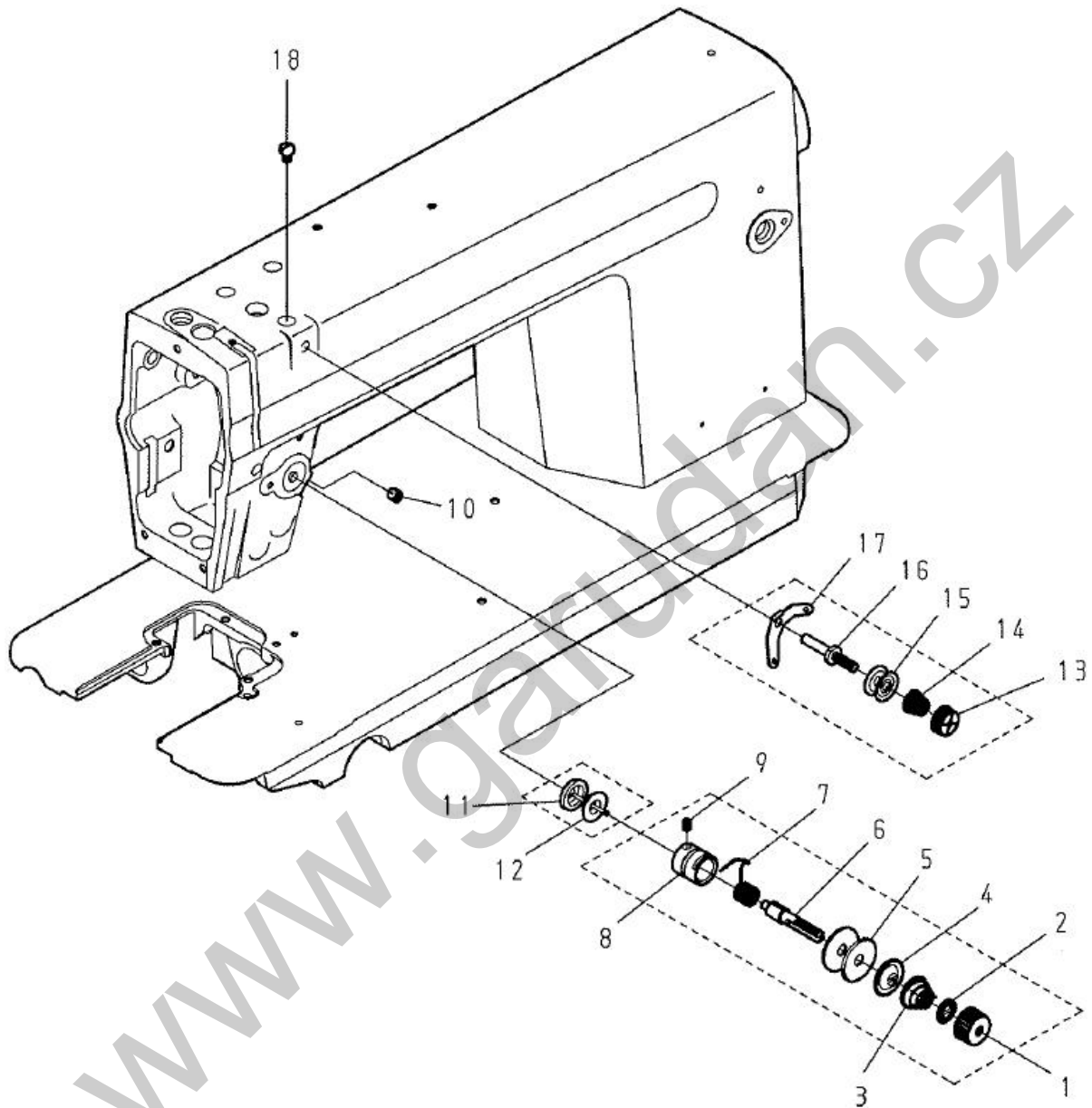
A. FRAME & MISCELLANEOUS COVER COMPONENTS (1/2)



A. FRAME & MISCELLANEOUS COVER COMPONENTS (1/2)

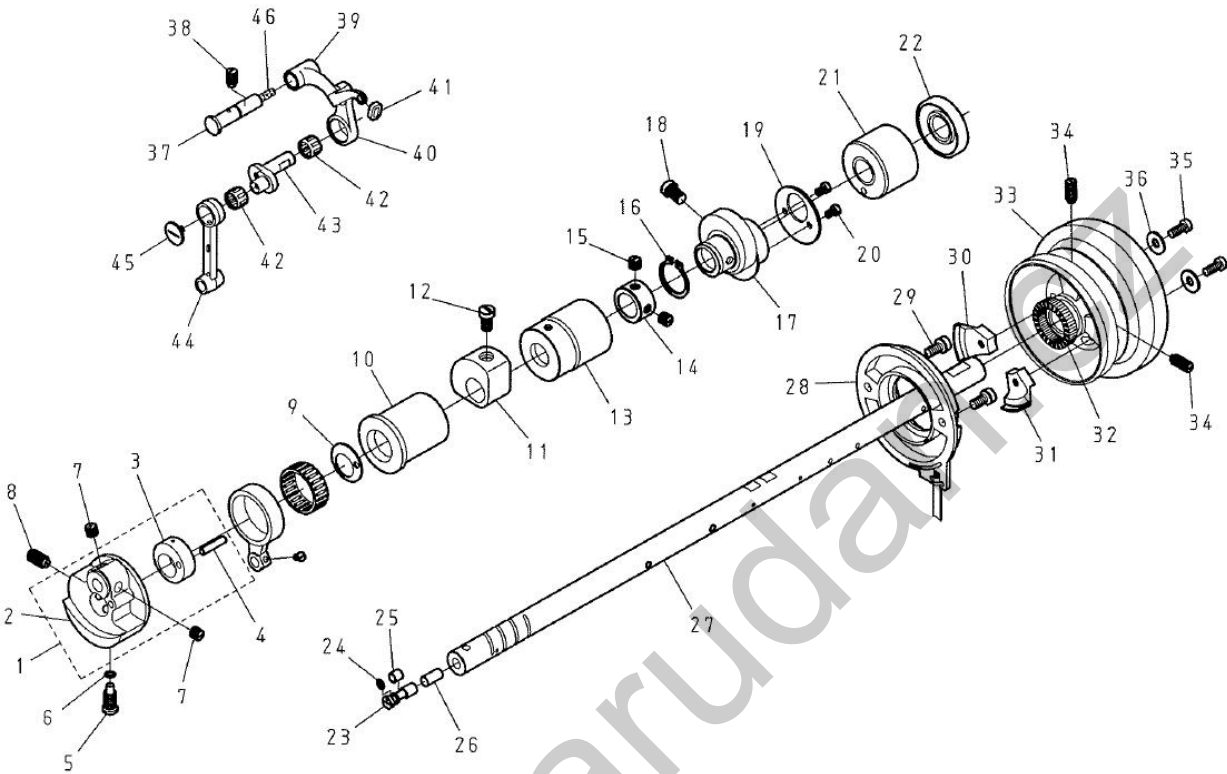
REF.No	Part No.	Name of Part	Q'TY	Remarks
1	FD1010-0A	Face Plate	1	
2	FD1011-0A	Packing	1	
3	ZSB12064	Screw 3/16-28*10	3	
4	SEN1250400	Rubber Plug	2	
5	FC4085-0A	Waste Material Guide	1	
6	ZSB08058	Screw 1/8-44*3.3	2	
7	FC4082-0A	Needle Plate	1	
8	ZSC11001	Screw 11/64-40*11	2	
9	ZSB08058	Screw 1/8-44*3.3	2	
10	FC4083-0A	Waste Material Guide	1	
11	FC4084-0A	Waste Material Guide Plate	1	
12	5100111600	Slide Plate	1	
13	5100111700	Slide Plate Spring	1	
14	ZSB06004	Screw 3/32-56*2.2	2	
15	FD1057-0A	Presser Bar Support	1	
16	ZSC12002	Screw 3/16-28*6.5	4	
17	FC6050-0A	Throat Plate	1	
18	ZSC11001	Screw 11/64-40*11	2	
19	5100110700	Bed Screw Stud	4	
20	75201159T0	Scraper	1	
21	FD1055-0A	Thread Guide	1	
22	ZSL09001	Nut 9/64-40	1	
23	5100312000	Thread Guide	1	
24	ZSB11082	Screw 11/64-40*6.5	1	
25	FD1014-0A	Rubber Plug	2	
26	SEN0850600	Rubber Plug	2	
27	5100112600	Thread Take-up Lever Cover	1	
28	ZSB12018	Screw 3/16-28*6	1	
29	51001134T0	Spool Pin	1	
30	FD1012-0A	Side Cover	1	
31	FD1013-0A	Packing	1	
32	51002827T0	Cord Holder	1	
33	ZSB12053	Screw 3/16-28*9	8	
34	ZSB12018	Screw 3/16-28*6	1	
35	WE000050	Washer	1	
36	SEN2000500	Rubber Plug	1	
37	51001645T0	Stopper	1	
38	ZSB12052	Screw 3/16-28*18	1	
39	SEN2101000	Rubber Plug	1	
40	5100311600	Thread Guide(Center)	1	
41	ZSB11082	Screw 11/64-40*6.5	1	
42	SEN0850600	Rubber Plug	1	
43	51001169T0	Rubber Plug	1	
44	SEN0850600	Rubber Plug	1	
45	SEN1250700	Rubber Plug	1	

A. FRAME & MISCELLANEOUS COVER COMPONENTS (2/2)



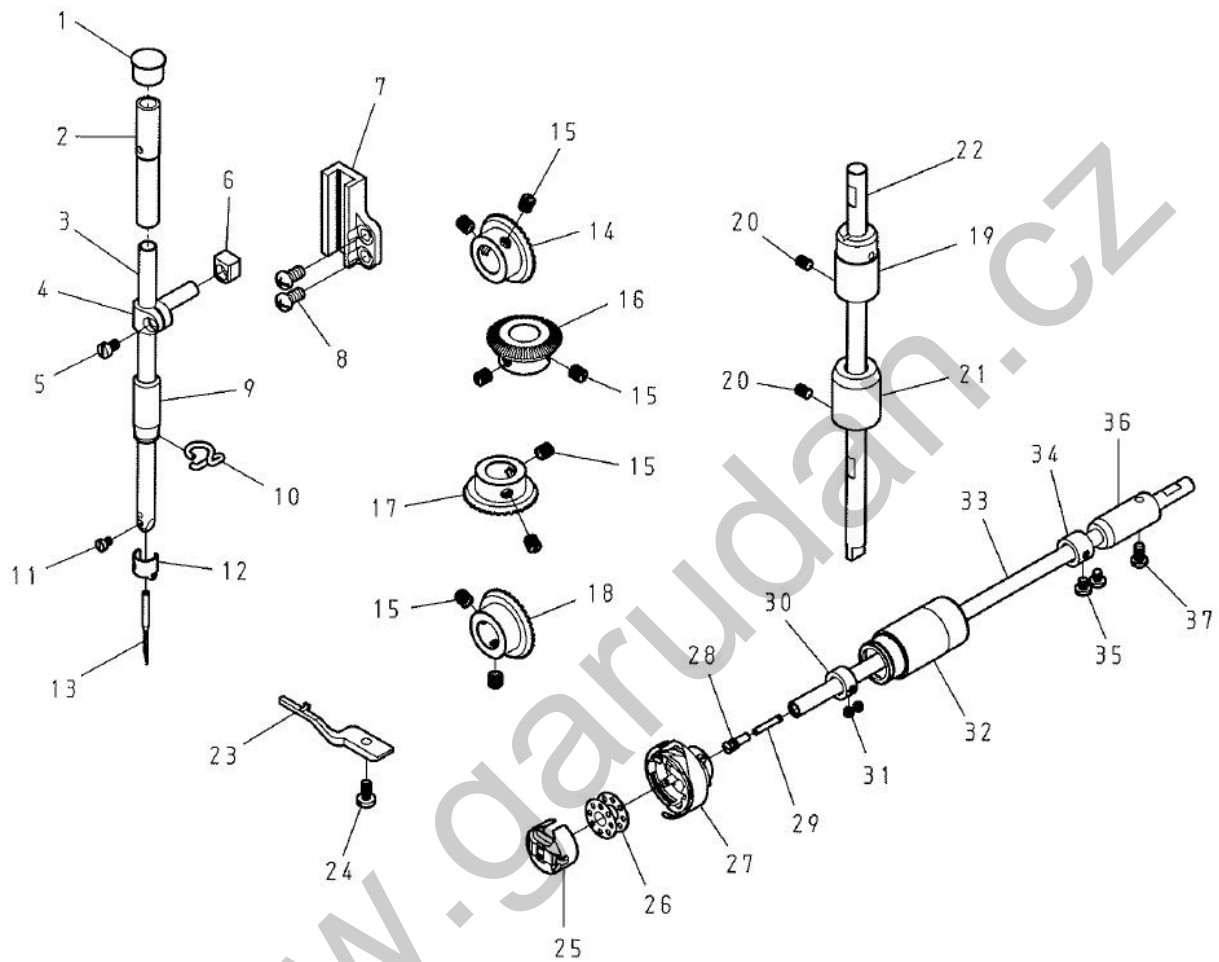
A. FRAME & MISCELLANEOUS COVER COPMONENTS (2/2)

REF.No	Part No.	Name of Part	Q'TY	Remarks
1	5100310300	Nut -----	1	
2	5100315200	Tension Disk Stopper -----	1	
3	5100310400	Tension Spring -----	1	
4	5100315400	Tension Regulator Presser Disk -----	1	
5	5100315300	Tension Disk -----	2	
6	5100310100	Thread Tension Post -----	1	
7	5100310800	Spring -----	1	
8	5100310500	Thread Tension Post Bracket -----	1	
9	ZSB09013	Screw 9/64-40*4 -----	1	
10	ZSA15028	Screw 15/64-28*7 -----	1	
11	FD1028-0A	Tention Releasing Pin -----	1	
12	FD1043-0A	Cap Ring -----	1	
13	51003155T0	Nut -----	1	
14	51003158T0	Thread Tension Post -----	1	
15	51003157T0	Tension Disk -----	2	
16	51003140T0	First Tension Post -----	1	
17	51003156T0	Upper Thread Tension Plate -----	1	
18	ZSB12018	Screw 3/16-28*6 -----	1	

B. MAIN SHAFT & THREAD TAKE-UP LEVER COMPONENTS

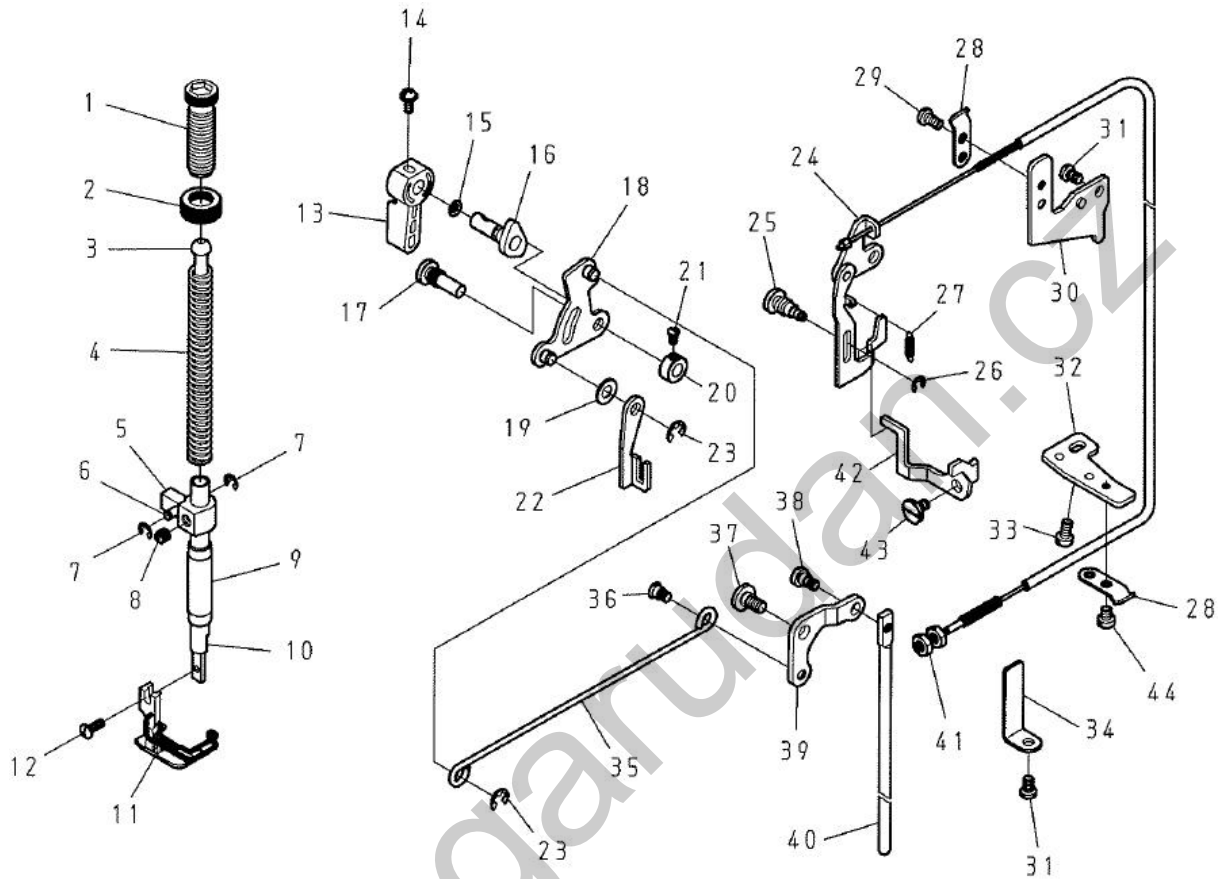
B. MAIN SHAFT & THREAD TAKE-UP LEVER COMPONENTS

REF.No	Part No.	Name of Part	Q'TY	Remarks
1	52001208T5	Counterweight Asm. -----	1	
2	52001208T0	Counterweight -----	(1)	
3	52004101T0	Knife Cam -----	(1)	
4	YA040190	Parallel Pins -----	(1)	
5	ZSB18011	Screw 9/32-28*16 -----	1	
6	OPP0044240	O-rings -----	1	
7	ZSA16025	Screw 1/4-40*6 -----	2	
8	ZSA18002	Screw 9/32-28*13,5 -----	1	
9	52004103T0	Washer -----	1	
10	FC1101-0A	Main Shaft Bushing, Front -----	1	
11	FC1110-0A	Brancer -----	1	
12	ZSB15019	Screw 15/64-28*9 -----	2	
13	5100120300	Main Shaft Bushing, Center -----	1	
14	5100122600	Collar -----	1	
15	ZSA16025	Screw 1/4-40*6 -----	2	
16	RB200200	Retaining Rings-C Type 20 -----	1	
17	5100122000	Feed Cam -----	1	
18	ZSB16031	Screw 1/4-40*11 -----	2	
19	5100122100	Bearing Cover -----	1	
20	ZSB09014	Screw 9/64-40*6 -----	2	
21	51001204T0	Main Shaft Bushing, Rear -----	1	
22	5100120500	Oil Seal -----	1	
23	5100354200	Oil Adjusting pin -----	1	
24	OPP0029178	O-rings -----	1	
25	5100353000	Holder -----	1	
26	XB106001	Felt -----	1	
27	FC1100-0A	Main Shaft -----	1	
28	51006020T5	Detector Bracket -----	1	
29	ZME05001	Screw M5 x 0,8*9,3 -----	2	
30	51006024T6	Magnet Fitting Base B Asm. -----	1	
31	51006024T5	Magnet Fitting Base A Asm. -----	1	
32	51006027T0	Magnet C -----	1	
33	51001223T0	Hand Wheel -----	1	
34	ZSA15010	Screw 15/64-28*15 -----	2	
35	ZSB11076	Screw 11/64-40*12 -----	2	
36	WA049003	Washer -----	2	
37	FD1061-0A	Thread Take-up Lever Link Pin -----	1	
38	ZSA15037	Screw 15/64-28*10,5 -----	1	
39	5100192000	Thread Take-up Lever Link -----	1	
40	5100190105	Thread Take-up Lever Com. -----	1	
41	5100190500	Oil Guard Rubber -----	1	
42	BN081208	Bearing -----	2	
43	75201213T0	Needle Bar Crank Shaft -----	1	
44	5100121000	Needle Bar Crank Rod -----	1	
45	ZSK09005	Hinge Screw -----	1	
46	5100192200	Felt -----	1	

C. NEEDLE BAR & UPRIGHT SHAFT & LOWER SHAFT COMPONENTS

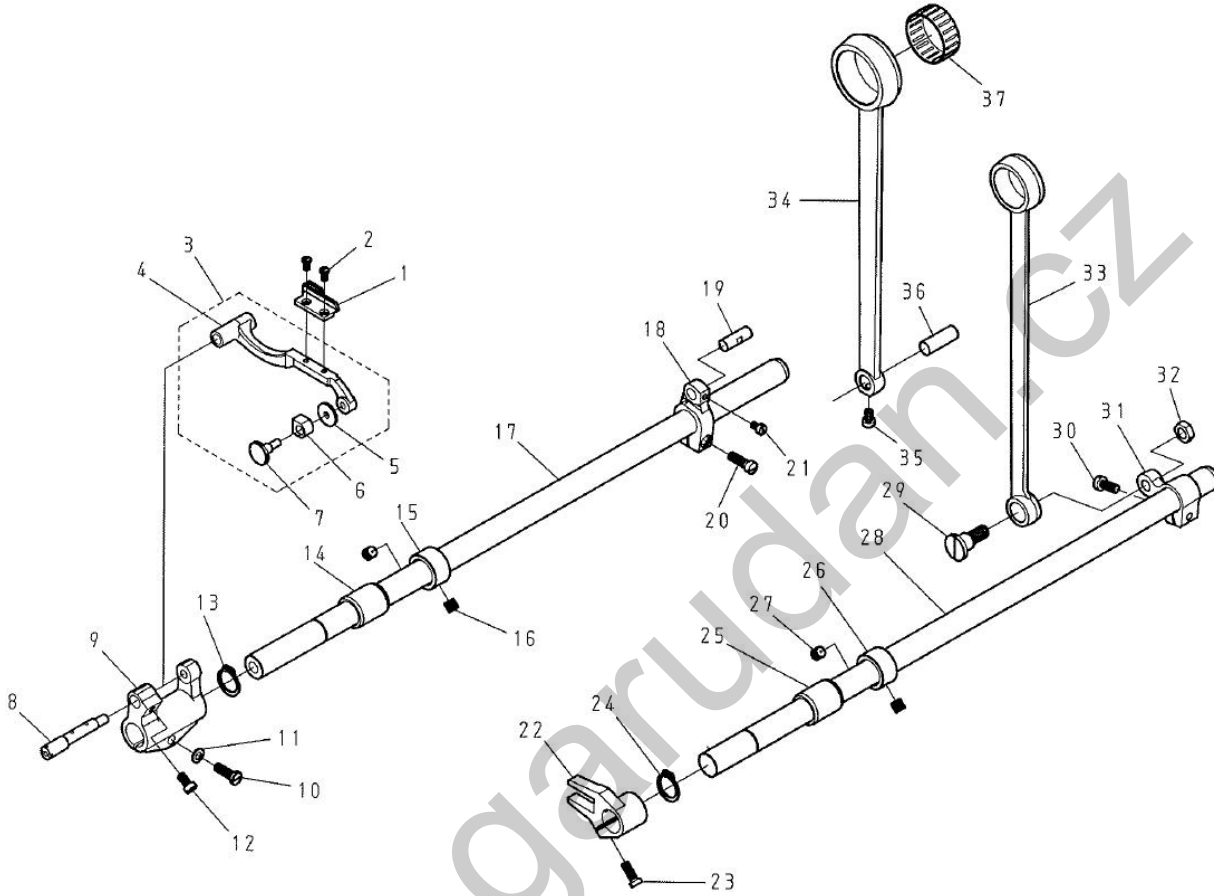
C. NEEDLE BAR & UPRIGHT SHAFT & LOWER SHAFT COMPONENTS

REF.No	Part No.	Name of Part	Q'TY	Remarks
1	5100141400	Rubber Plug	1	
2	5100140400	Needle Bar Bushing, Upper	1	
3	52001401T0	Needle Bar	1	
4	5100140900	Needle Bar Connection	1	
5	ZSB09014	Screw 9/64-40*6	1	
6	5100141000	Slide Block	1	
7	52001411T0	Needle Bar Guide	1	
8	ZSB12053	Screw 3/16-28*9	2	
9	5100140500	Needle Bar Bushing, Lower	1	
10	FC1075-0A	Thread Guide(Lower)	1	
11	ZSB08010	Screw 1/8-44*4,6	1	
12	FC1076-0A	Needle Bar Thread Guide	1	
13	INDBX1-14	Needle DB x 1-14	1	
14	5100133000	Bevel Gear, Large	1	
15	ZSA16022	Screw 1/4-40*7	8	
16	5100133100	Bevel Gear, Small	1	
17	5100180600	Bevel Gear, Large	1	
18	5100180700	Screw Gear, Back	1	
19	5100132100	Upright Shaft Bushing	1	
20	ZSA15016	Screw 15/64-28*7	2	
21	5100132200	Needle Bar Bushing, Lower	1	
22	5100132000	Upright Shaft	1	
23	51001858T0	Bobbin Case Positioning Finger	1	
24	ZSB11026	Screw 11/64-40*10	1	
25	60001853T0	Bobbin Case	1	
26	5100183200	Bobbin	1	
27	51001851T0	Hook	1	
28	5100354400	Screw	1	
29	5100354500	Filter	1	
30	5100188200	Thrust Collar	1	
31	ZSA11004	Screw 11/64-40*3,5	2	
32	75201803T0	Bushing, Front	1	
33	5100180100	Hook Driving Shaft	1	
34	5100184900	Thrust Collar	1	
35	ZSB11008	Screw 11/64-40*5	2	
36	5100180500	Bushing, Front,	1	
37	ZSB12053	Screw 3/16-28*9	1	

D. PRESSURE FOOT MECHANISM COMPONENTS

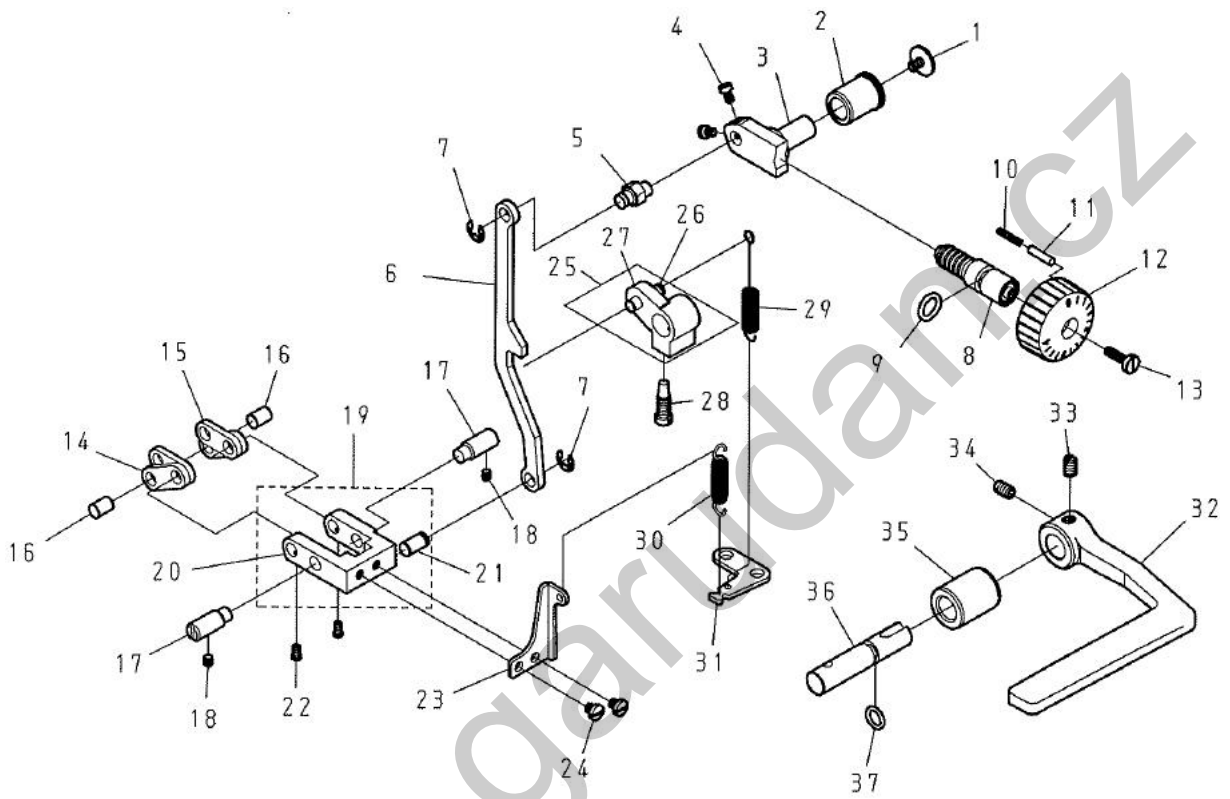
D. PRESSURE FOOT MECHANISM COMPONENTS

REF.No	Part No.	Name of Part	Q'TY	Remarks
1	5100150300	Screw	1	
2	5100151500	Nut	1	
3	5100154800	Spring Guide	1	
4	5100150400	Spring	1	
5	FD1185-0A	Presser Bar Guide Bracket	1	
6	FD1186-0A	Pin	1	
7	RE000030	Retaining Rings- E Type 3	2	
8	ZSA18025	Screw 1/4-40*6	1	
9	75201502T0	Bushing	1	
10	FC1180-0A	Presser Bar	1	
11	5200GC0048	Presser foot Asm.	1	
12	ZSB09002	Screw 9/64-40*10	1	
13	5100150800	Hand lifter Lever	1	
14	ZSE09001	Screw 9/64-40*9.6	1	
15	OPP0037178	O-rings	1	
16	5100150700	Hand Lifter Cam	1	
17	ZSK20016	Screw	1	
18	5100344005	Thread Releasing Plate Asm.	1	
19	WA060034	Washer	1	
20	FD1209-0A	Collar	1	
21	ZSB09029	Screw 9/64-40*6	1	
22	FD1187-0A	Thread Releasing Plate B	1	
23	RE000050	Retaining Rings- E Type 5	2	
24	75203127T5	Thread Release Wire Asm.	1	
25	ZSK20017	Screw	1	
26	RE000030	Retaining Rings- E Type 3	1	
27	FD1210-0A	Reverse Spring	1	
28	51003160T0	Wire Holder A	2	
29	ZSB11007	Screw 11/64-40*7	2	
30	51003161T0	Wire Holder Bracket,Upper	1	
31	ZSB12018	Screw 3/16-28*6	2	
32	FD1195-0A	Wire Holder Bracket,Lower	1	
33	ZSB11029	Screw 11/64-40*7	2	
34	51003163T0	Wire Holder	2	
35	5100340400	Side Connecting Bar	1	
36	ZSG12063	Hinge Screw	1	
37	ZSG15065	Hinge Screw	1	
38	ZSG12084	Hinge Screw	1	
39	FD1192-0A	Presser Bar Lifting Link	1	
40	FD1193-0A	Lifting Lever Connecting Rod	1	
41	ZSL12002	Nut 3/16-32	2	
42	7520312600	Thread Release Plate	1	
43	ZSG12077	Hinge Screw	1	
44	ZSB11091	Screw 11/64-40*4	1	

E. LOWER FEED MECHANISM COMPONENTS

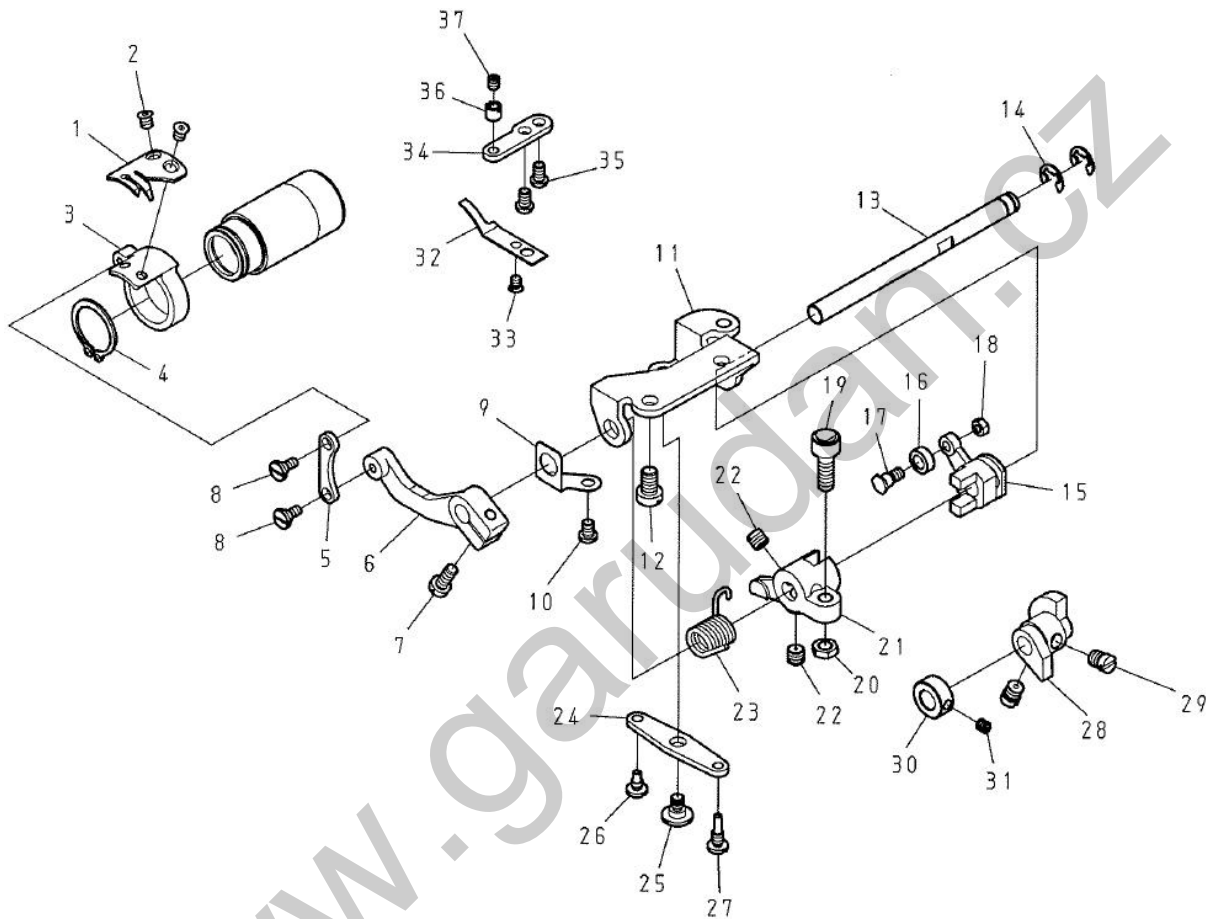
E. LOWER FEED MECHANISM COMPONENTS

REF.No	Part No.	Name of Part	Q'TY	Remarks
1	FC6051-0A	Feed dog -----	1	
2	ZSB08001	Screw 1/8-44*6 -----	2	
3	51001601T5	Feed Bar Asm. -----	1	
4	51001601T0	Feed Bar -----	(1)	
5	510016010A	Washer $\phi 13 \times 1.5$ d=6.1 -----	(1)	
6	5100169600	Square Block -----	(1)	
7	5100163300	Square Block Pin -----	(1)	
8	5100164900	Feed Bar Shaft -----	8	
9	5100160500	Feed Bar Rod -----	9	
10	ZSB12017	Screw 3/16-28*15 -----	1	
11	WA059002	Washer -----	1	
12	ZSB11012	Screw 11/64-40*8 -----	1	
13	RB200150	Retaining Rings-C Type 15 -----	1	
14	5100160600	Bushing -----	1	
15	5100122600	Collar -----	1	
16	ZSA16025	Screw 1/4-40*6 -----	2	
17	5100160400	Feed Rocker Shaft -----	1	
18	5100160800	Feed Rocker Shaft Crank -----	1	
19	5100167600	Pin -----	1	
20	ZSB12005	Screw 3/16-28*15 -----	1	
21	ZSB09014	Screw 9/64-40*6 -----	1	
22	5100170800	Feed Bar Forked Connection -----	1	
23	ZSB11017	Screw 11/64-40*12 -----	1	
24	RB200150	Retaining Rings-C Type 15 -----	1	
25	5100160600	Bushing -----	1	
26	5100122600	Collar -----	1	
27	ZSA16025	Screw 1/4-40*6 -----	2	
28	5100170300	Feed Rod Shaft -----	1	
29	ZSG18009	Hinge Screw -----	1	
30	ZSB12002	Screw 3/16-28*12 -----	1	
31	5100170500	Feed Lifting Rock Link -----	1	
32	ZSL18004	Nut 9/32-28 -----	1	
33	5100170100	Feed Rod -----	1	
34	5100164700	Horizontal Feed Rod -----	1	
35	ZSB09014	Screw 9/64-40*6 -----	1	
36	5100167500	Horizontal Feed Rod Shaft -----	1	
37	BN283313	Bearing -----	1	

F. FEED ADJUSTMENT MECHANISM COMPONENTS

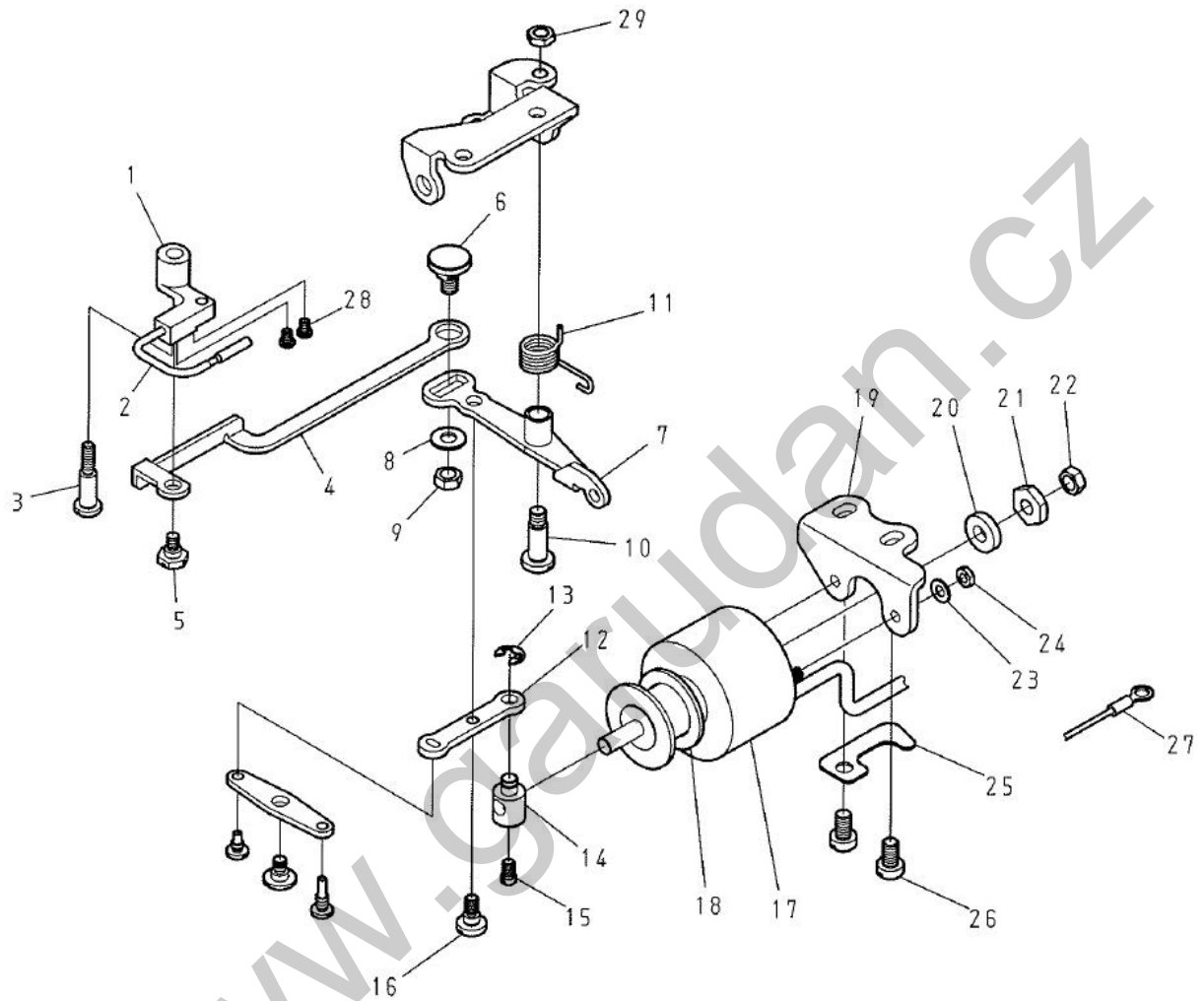
F. FEED ADJUSTMENT MECHANISM COMPONENTS

REF.No	Part No.	Name of Part	Q'TY	Remarks
1	ZSB12054	Screw 3/16-28*7	1	
2	5100162800	Bushing	1	
3	5100161100	Feed Regulator	1	
4	ZSB09014	Screw 9/64-40*6	2	
5	5100164400	Eccentric Shaft	1	
6	51001651T0	Connecting Rod	1	
7	RE000050	Retaining Rings- E Type 5	2	
8	FD1170-0A	Feed Regulating Screw	1	
9	OP00100A	O-rings	1	
10	E1158-0A	Spring	1	
11	FD1171-0A	Pin	1	
12	FC1172-0A	Dial	1	
13	ZSB12051	Screw 3/16-28*18	1	
14	5100167400	Link	2	
15	5100165200	Link	2	
16	5100167800	Pin	2	
17	5100167700	Reverse Block Pin	2	
18	ZSA15016	Screw 15/64-28*7	2	
19	51001670T5	Reverse Block Asm.	1	
20	51001670T0	Reverse Block	(1)	
21	5100167100	Pin	(1)	
22	ZSB09029	Screw 9/64-40*6	2	
23	5100166000	Spring Suspension	1	
24	ZSB11008	Screw 11/64-40*5	2	
25	5100163405	Reverse Feed Crank Asm.	1	
26	5100168500	Pin	(1)	
27	5100163400	Reverse Feed Crank	(1)	
28	ZSB16032	Screw 1/4-40*19.6	1	
29	5100163500	Spring	1	
30	51001620T0	Spring	1	
31	5100163600	Spring Suspension	1	
32	5100161200	Lever	1	
33	ZMA06014	Screw M6 x 1*10	1	
34	ZMA06007	Screw M6 x 1*9.5	1	
35	5100174100	Lever Shaft Bushing	1	
36	5100161800	Lever Shaft	1	
37	OPP00800	O-rings	1	

G. THREAD TRIMMER MECHANISM COMPONENTS (1/2)

G. THREAD TRIMMER MECHANISM COMPONENTS (1/2)

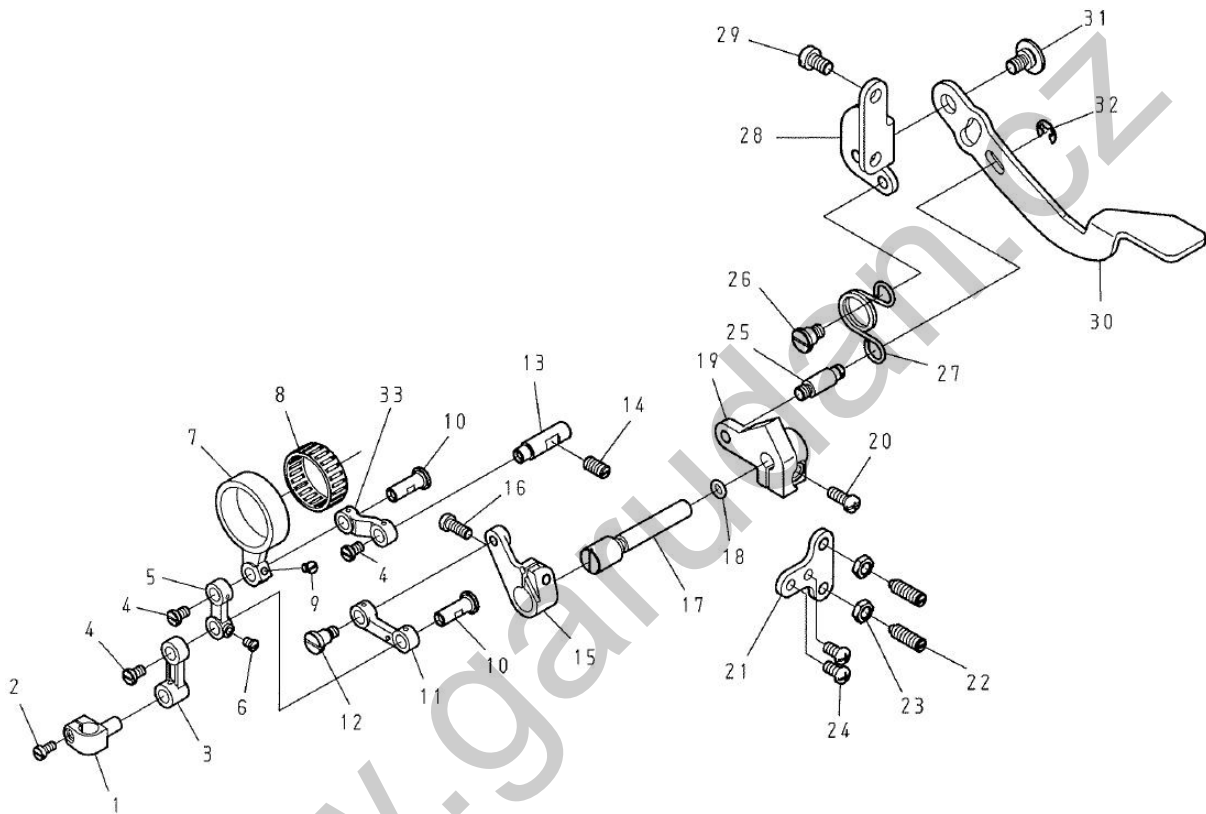
REF.No	Part No.	Name of Part	Q'TY	Remarks
1	75202430T0	Movable Knife -----	1	
2	ZSC11024	Screw 11/64-40*5.4 -----	2	
3	75202442T0	Knife Base -----	1	
4	RB200220	Retaining Rings-C Type 22 -----	1	
5	75202419T0	Link -----	1	
6	75202413T0	Knife Driving Crank -----	1	
7	ZSB12002	Screw 3/16-28*12 -----	1	
8	ZSG09058	Hinge Screw -----	2	
9	75203548T0	Oil Shield -----	1	
10	ZSB11035	Screw 11/64-40*6 -----	1	
11	75202426T0	Base Plate -----	1	
12	ZSB15010	Screw 15/64-28*10 -----	2	
13	75202401T0	Knife Driving Shaft -----	1	
14	RE000060	Retaining Rings- E Type 6 -----	2	
15	75202421T0	Cam Follower Crank A -----	1	
16	75202417T0	Roller -----	1	
17	ZSG11098	Hinge Screw -----	1	
18	ZSL09001	Nut 9/64-40 -----	1	
19	75202414T5	Stopper Screw Asm. -----	1	
20	ZSL15002	Nut 15/64-28 -----	1	
21	75202420T0	Cam Follower Crank B -----	1	
22	ZSA16025	Screw 1/4-40*6 -----	2	
23	75202422T0	Spring -----	1	
24	75202434T0	Link -----	1	
25	ZSG12077	Hinge Screw -----	1	
26	75202436T0	Hinge Screw -----	1	
27	75202435T0	Hinge Screw -----	1	
28	75202405T0	Thread Trimmer Cam -----	1	
29	ZSB16033	Screw 1/4-40*6 -----	2	
30	51002449T0	Collar -----	1	
31	ZSA11012	Screw 11/64-40*4.6 -----	1	
32	75202402T0	Fixed Knife -----	1	
33	ZSC09008	Screw 9/64-40*5 -----	1	
34	75202403T0	Fixed Knife Base -----	1	
35	ZSB11029	Screw 11/64-40*7 -----	2	
36	ZSN11004	Nut 11/64-40 -----	1	
37	ZSA11002	Nut 11/64-40 -----	1	

G. THREAD TRIMMER MECHANISM COMPONENTS (2/2)

G. THREAD TRIMMER MECHANISM COMPONENTS (2/2)

REF.No	Part No.	Name of Part	Q'TY	Remarks
1	75202461T0	Picker Arm	1	
2	51002460T0	Thread Take-up Picker Asm.	1	
3	ZSG11083	Hinge Screw	1	
4	75202462T0	Picker Link	1	
5	ZSG11084	Hinge Screw	1	
6	ZSK15045	Hinge Screw	1	
7	75202427T5	Clutch Plate Asm.	1	
8	WA069001	Washer	1	
9	ZSL16005	Nut 1/4-40	1	
10	ZSG15091	Hinge Screw	1	
11	75202410T0	Spring	1	
12	75202433T0	Link	1	
13	RE000050	Retaining Rings- E Type 5	1	
14	51002408T0	Pin	1	
15	ZSB11006	Screw 11/64-40*6.5	1	
16	ZSG12064	Hinge Screw	1	
17	51002406T0	Thread Cutting Solenoid Asm.	1	
18	51002407T0	Cusion	1	
19	51002409T0	Solenoid Instaling Base	1	
20	51002448T0	Cusion	1	
21	ZSL16015	Nut 1/4-40	1	
22	ZSL16005	Nut 1/4-40	1	
23	WA049003	Washer	2	
24	ZML04002	Nut M4 x 0.7	2	
25	5100353000	Holder	1	
26	ZSB15018	Screw 15/64-28*12	2	
27	5100620105	Ground Wire Asm.	1	
28	ZSB09005	Screw 9/64-40*5	2	
29	ZSL15002	Nut 15/64-28	1	

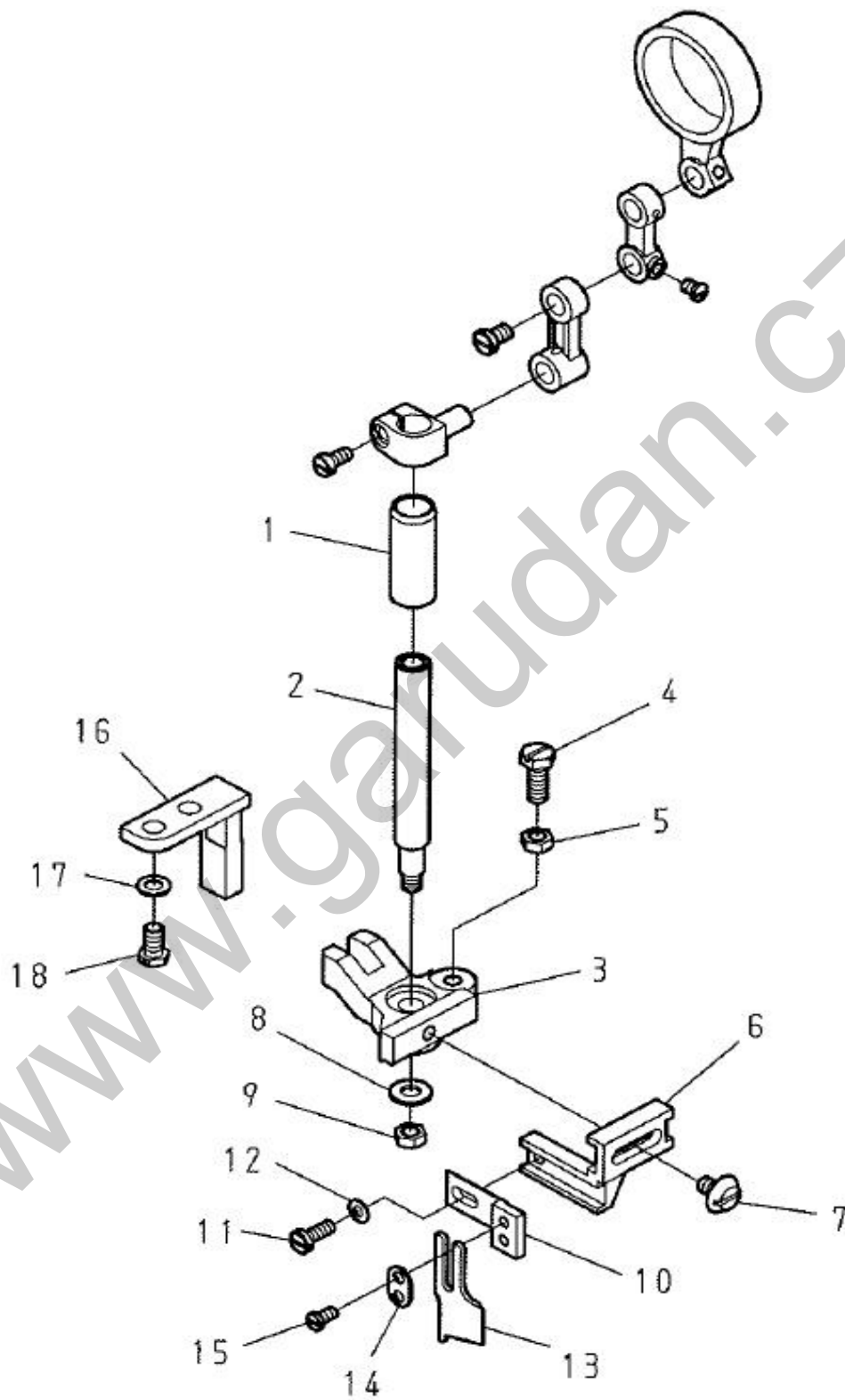
H. KNIFE COMPONENTS (1/2)



H. KNIFE COMPONENTS (1/2)

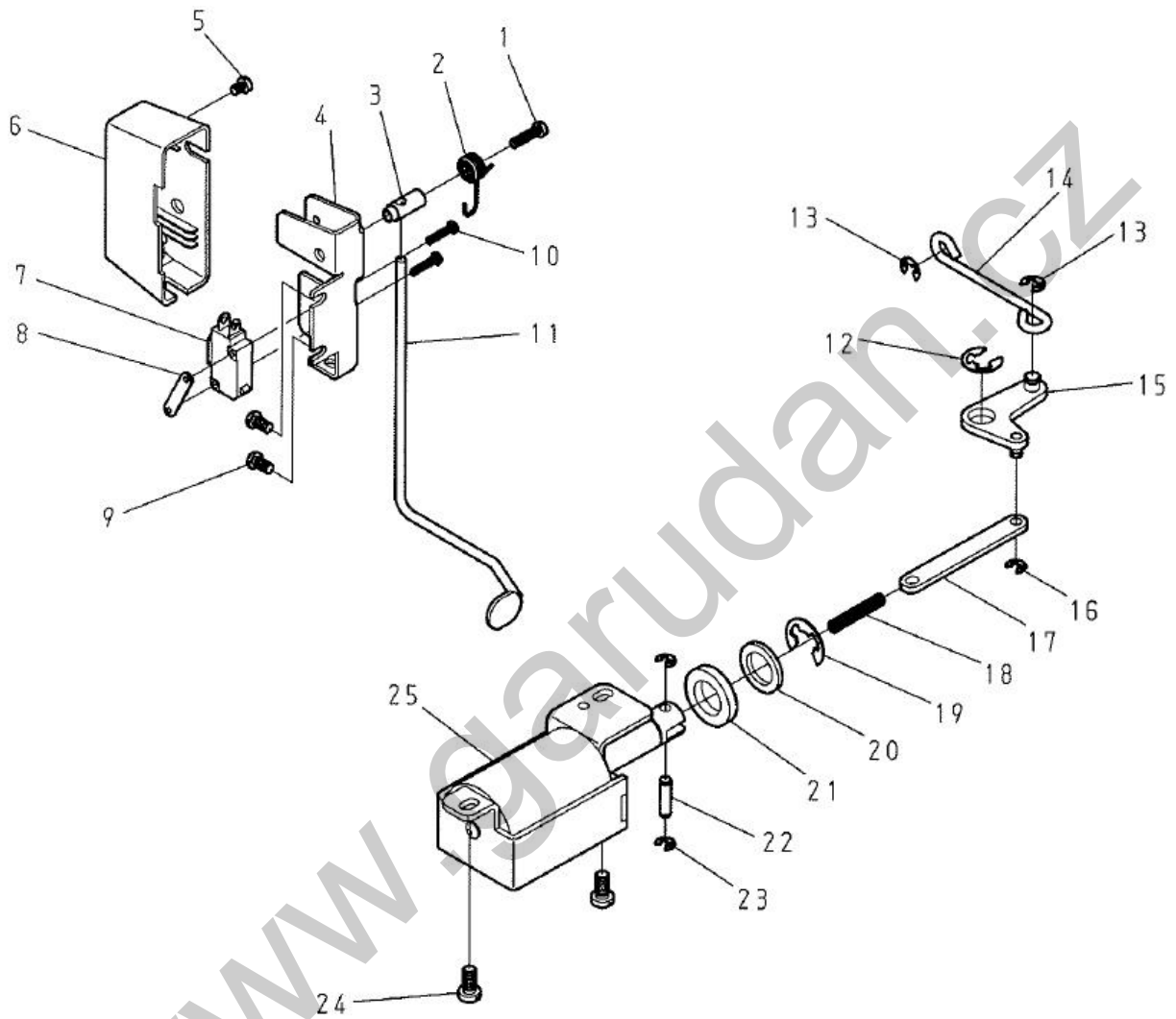
REF.No	Part No.	Name of Part	Q'TY	Remarks
1	75204120T0	Knife Driving Shaft Connection	1	
2	ZSB09007	Screw 9/64-40*7.5	1	
3	75204105T0	Link	1	
4	ZSB11022	Screw 11/64-40*7	3	
5	75204104T0	Link	1	
6	ZSB09012	Screw 9/64-40*4.5	1	
7	75204102T0	Link	1	
8	BN252910	Bearing	1	
9	ZSB09012	Screw 9/64-40*4.5	1	
10	75204108T0	Pin	2	
11	75204106T0	Link	1	
12	ZSG12095	Hinge Screw	1	
13	75204109T0	Rod Link Shaft	1	
14	ZSA15020	Screw 15/64-28*11	1	
15	75204110T0	Link Support Arm	1	
16	ZSB12002	Screw 3/16-28*12	1	
17	75204111T0	Knife Set Lever Shaft	1	
18	OPP00500	O-rings	1	
19	75204112T0	Knife Set Lever Base	1	
20	ZSB12002	Screw 3/16-28*12	1	
21	75204115T0	Knife Lever Stopper	1	
22	ZSA15053	Screw 15/64-28*19.5	1	
23	ZSL15002	Nut 15/64-28	2	
24	ZSB12053	Screw 3/16-28*9	2	
25	75204116T0	Pin	2	
26	ZSG15090	Hinge Screw	1	
27	75204117T0	Spring	1	
28	75204114T0	Knife Lever Base	1	
29	ZSB15010	Screw 15/64-28*10	1	
30	75204113T0	Knife Lever	2	
31	ZSG16058	Hinge Screw	1	
32	RE000050	Retaining Rings- E Type 5	1	
33	75204107T0	Link	1	

H. KNIFE COMPONENTS (2/2)



H. KNIFE COMPONENTS (2/2)

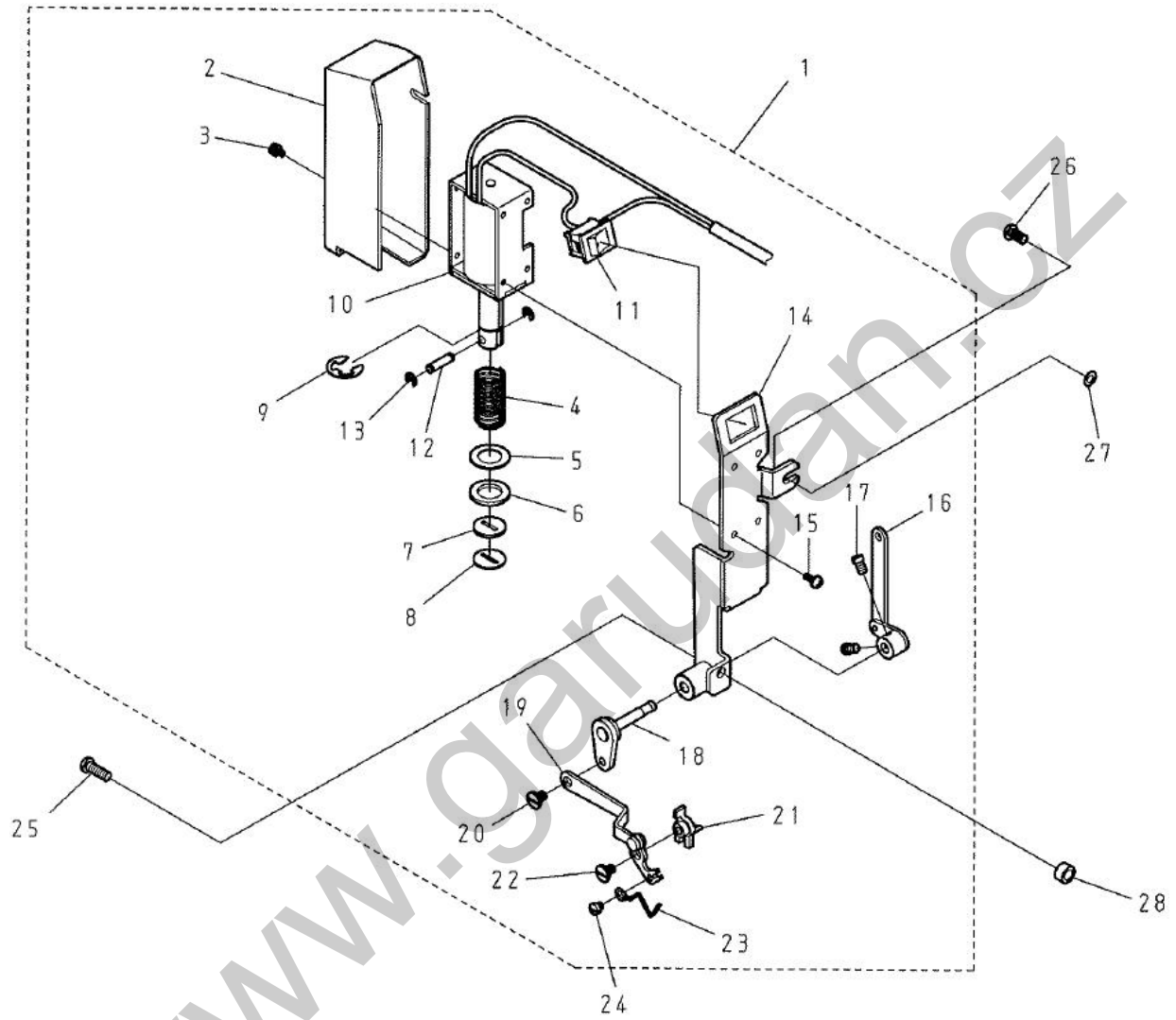
REF.No	Part No.	Name of Part	QTY	Remarks
1	75204119T0	Bushing -----	1	
2	75204118T0	Knife Driving Shaft -----	1	
3	75204121T0	Knife Holder A -----	1	
4	ZSD12001	Screw 3/16-28*13 -----	1	
5	ZSL12004	Screw 3/16-32*12 -----	1	
6	75204122T0	Knife Holder B -----	1	
7	ZSB11109	Screw 11/64-40*8 -----	1	
8	WA059005	Washer -----	1	
9	ZSL12004	Nut 3/16-28 -----	1	
10	75204123T0	Knife Holder C -----	1	
11	ZSB09034	Screw 9/64-40*10 -----	1	
12	WA030002	Washer -----	1	
13	FC1440-0A	Knife -----	1	
14	FC1439-0A	Washer -----	1	
15	ZSB08001	Screw 1/8-44*6 -----	2	
16	75204124T0	Knife Mounting Base -----	1	
17	WA059002	Washer -----	2	
18	ZSD12006	Screw 3/16-28*9 -----	2	

I. AUTOMATIC REVERSE FEED MECHANISM COMPONENTS

I. AUTOMATIC REVERSE FEED MECHANISM COMPONENTS

REF.No	Part No.	Name of Part	Q'TY	Remarks
1	ZMB04032	Screw M4 × 0,7*16	1	
2	51002816T0	Spring	1	
3	51002815T0	Switch Shaft	1	
4	51002805T0	Switch Base	1	
5	ZMB04023	Screw M4 × 0,7*6	1	
6	51002802T0	Switch Cover	1	
7	51002801T0	Switch Asm.	1	
8	51002817T0	Switch Plate	1	
9	ZSB12053	Screw 3/16-28*9	2	
10	ZMB03032	Screw M3 × 0,5*15	2	
11	75202814T0	Switch Lever	1	
12	RE000090	Retaining Rings- E Type 9	1	
13	RE000050	Retaining Rings- E Type 5	2	
14	51002823T0	Reverse Feed Connecting Shaft	1	
15	51002822T5	Connecting Arm Asm.	1	
16	RE000040	Retaining Rings- E Type 4	1	
17	51002824T0	Reverse Feed Connecting Link	1	
18	51002825T0	Spring	1	
19	RE000120	Retaining Rings- E Type 12	1	
20	WH116001	Washer	1	
21	51002826T0	Cusion	1	
22	51002821T0	Pin	1	
23	RE000040	Retaining Rings- E Type 4	2	
24	ZSB15018	Screw 15/64-28*12	2	
25	51002820T0	Reverse Feed Solenoid	1	

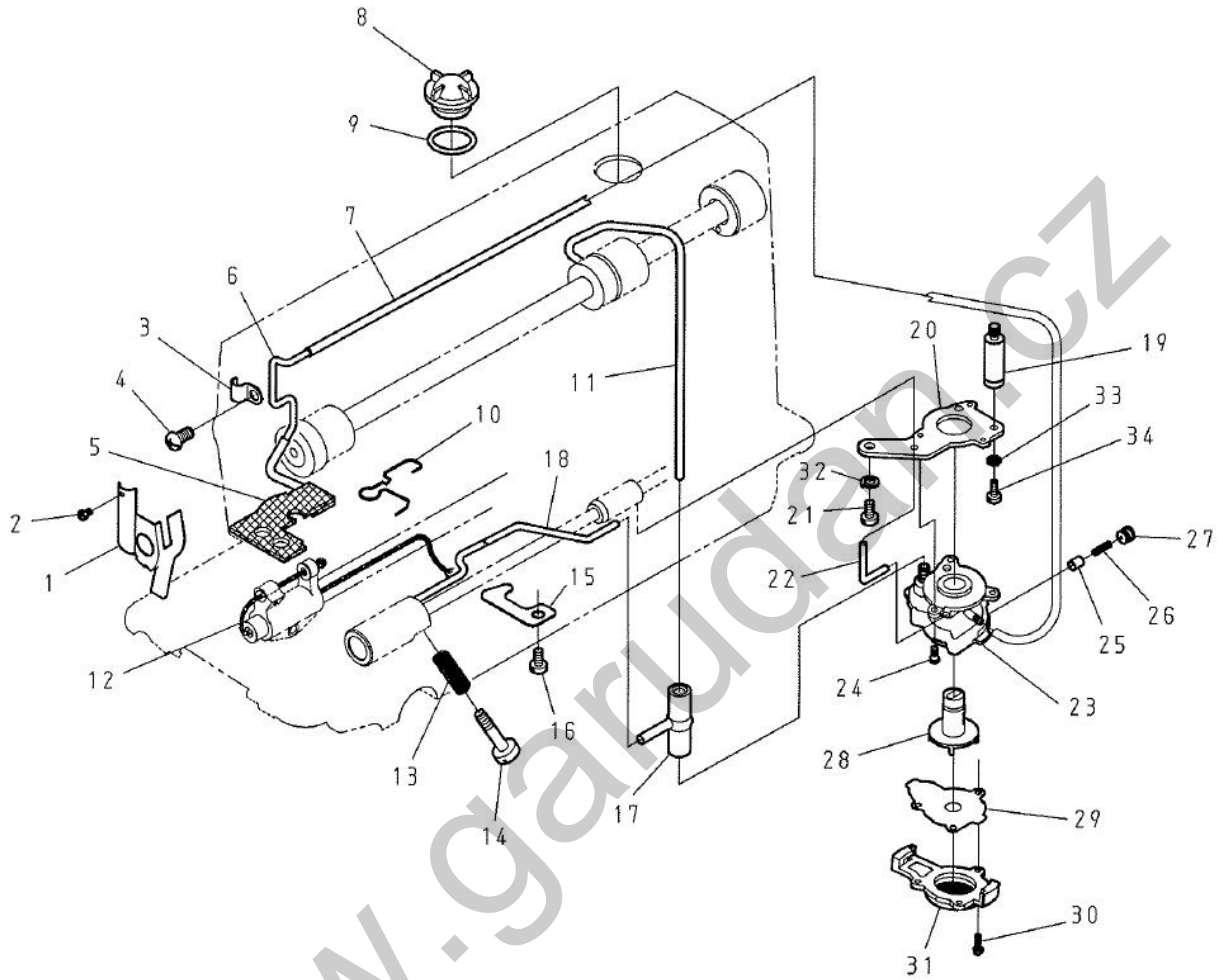
J. WIPER MECHANISM COMPONENTS



J. WIPER MECHANISM COMPONENTS

REF.No	Part No.	Name of Part	Q'TY	Remarks
1	75202151T5	Wiper Asm. -----	1	
2	75202167T0	Wiper Cover -----	(1)	
3	ZME03002	Screw M3 x 0.5*6 -----	(1)	
4	75202169T0	Spring -----	(1)	
5	WA120008	Washer -----	(1)	
6	75202172T0	Cusion Rubber -----	(1)	
7	75202165T0	Cusion Rubber -----	(1)	
8	75202164T0	Washer -----	(1)	
9	RE000090	Retaining Rings- E Type 9 -----	(1)	
10	75202162T0	Wiper Solenoid -----	(1)	
11	5100216600	Wiper Switch -----	(1)	
12	75202157T0	Wiper Solenoid Pin -----	(1)	
13	RE000030	Retaining Rings- E Type 3 -----	(2)	
14	75202163T0	Wiper Base Asm. -----	(1)	
15	ZME03005	Screw M3 x 0.5*8 -----	(4)	
16	75202152T5	Wiper Link A -----	(1)	
17	ZSB11006	Screw 11/64-40*6.5 -----	(2)	
18	75202155T5	Wiper Driving Shaft Asm. -----	(1)	
19	75202153T5	Wiper Link B -----	(1)	
20	ZSG11126	Hinge Screw -----	(1)	
21	75202160T0	Wiper Base -----	(1)	
22	ZSG11126	Hinge Screw -----	(1)	
23	75202151T0	Wiper -----	(1)	
24	ZSB09040	Screw 9/64-40*3.5 -----	(1)	
25	ZSB12065	Screw 3/16-28*14 -----	1	
26	ZSB12053	Screw 3/16-28*9 -----	1	
27	WA040020	Washer -----	1	
28	PC4241-0A	Collar -----	1	

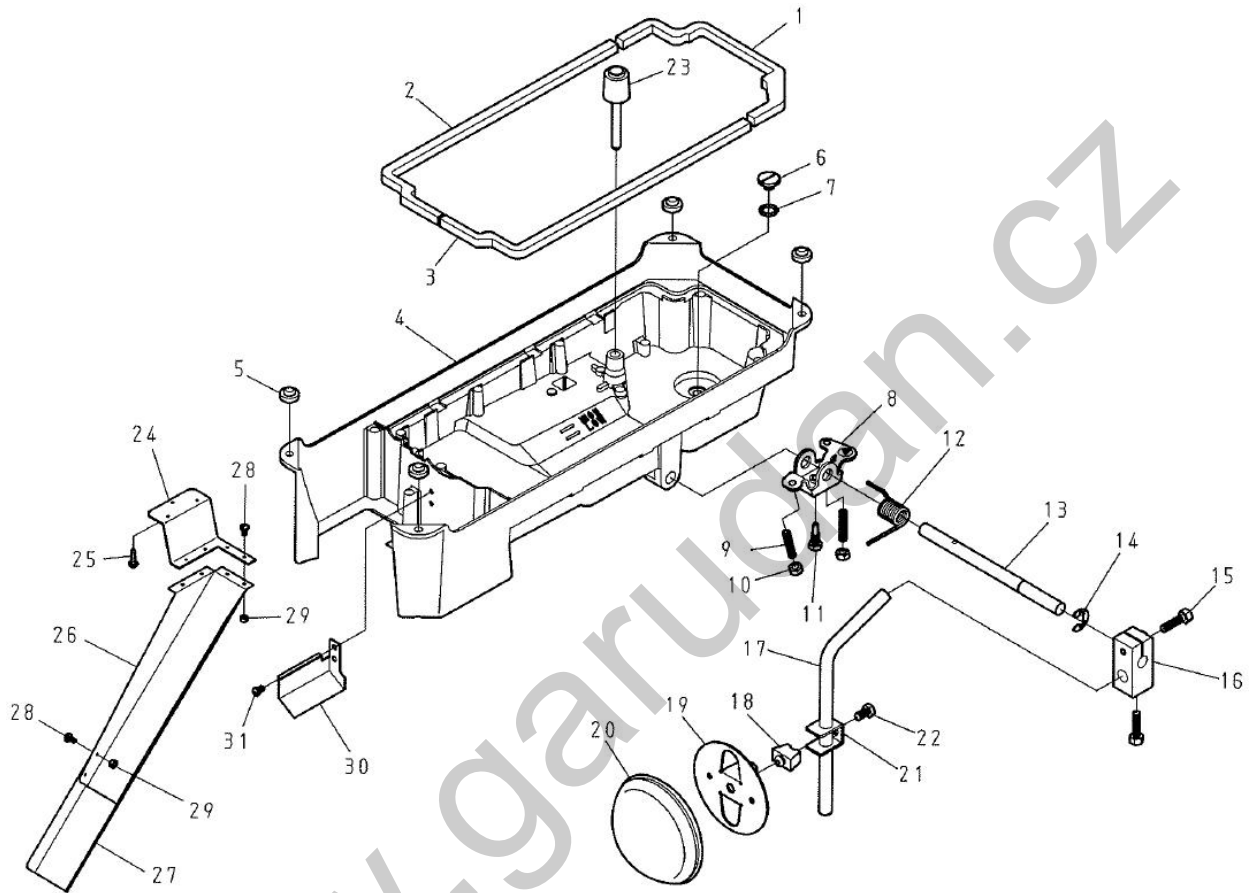
K. OIL LUBRICATION MECHANISM COMPONENTS



K. OIL LUBRICATION MECHANISM COMPONENTS

REF.No	Part No.	Name of Part	Q'TY	Remarks
1	5100351805	Oil Stopper Plate Asm.	1	
2	ZSB08010	Screw 1/8-44*4,6	1	
3	7390353000	Holder	1	
4	ZSB12046	Screw 3/16-28*7	1	
5	52003567T5	Felt Asm.	1	
6	52003558T0	Oil Pipe	1	
7	XP300520	Oil Tube	1	
8	FD1132-0A	Oil Sight Window	1	
9	OPP205250	O-rings	1	
10	75203535T0	Felt Holder	1	
11	5100358900	Oil Pipe Asm.	1	
12	XA200300	Oil Wick	1	
13	5100354700	Spring	1	
14	5100354100	Oil Adjusting Screw	1	
15	5100353000	Holder	1	
16	ZSB15010	Screw 15/64-28*10	1	
17	5100354000	Oil Pipe Joint	1	
18	5100359100	Oil Pipe Asm.	1	
19	51003517T0	Bed Screw Stud	1	
20	5100354900	Oil Pump Support Plate	1	
21	ZSB15010	Screw 15/64-28*10	1	
22	5100353800	Oil Pipe Joint	1	
23	5100358000	Oil Pump Body	1	
24	ZME03005	Screw M3 x 0,5*8	3	
25	5100359400	Plunger	1	
26	5100359500	Spring	1	
27	5100359300	Screw	1	
28	5100358300	Impeller	1	
29	5100358500	Housing Plate	1	
30	5100358700	Filter Screen Plate.	1	
31	ZMT03007	Screw 3*10	3	
32	WB061001	Spring Lock Washers	1	
33	WB041001	Spring Lock Washers	1	
34	ZSB11050	Screw 11/64-40*10,5	1	

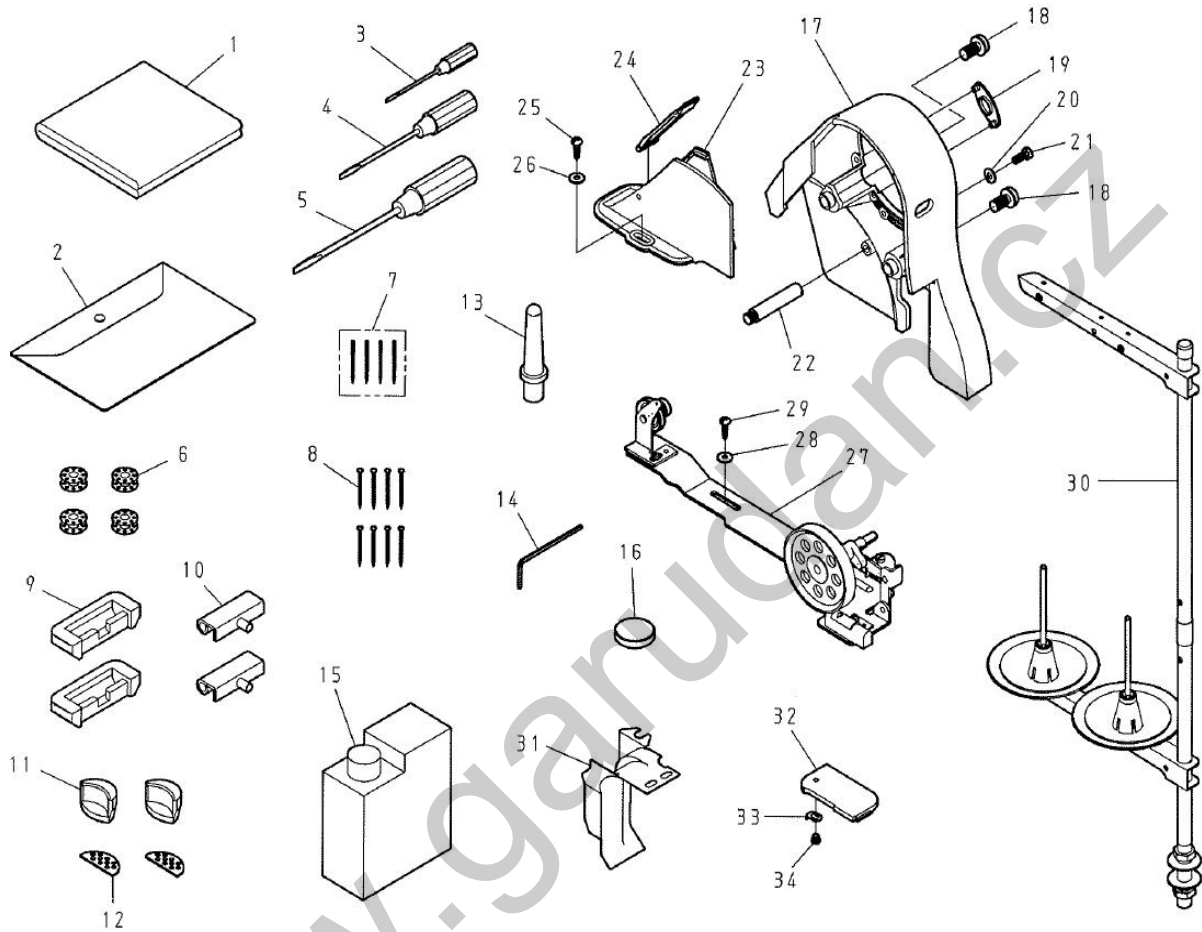
L. ACCESSORIES (1/2)



L. ACCESSORIES (1/2)

REF.No	Part No.	Name of Part	Q'TY	Remarks
1	5100350400	Packing -----	1	
2	5100350500	Packing -----	1	
3	5100350500	Packing -----	1	
4	5100350100	Oil Pan -----	1	
5	5100913700	Vibration Preventing Rubber -----	4	
6	ZSB20018	Screw 5/16-24*7 -----	1	
7	OPP01080	O-rings -----	1	
8	5100342900	Rotating Lever -----	1	
9	ZMH06018	Screw M6 x 1*30 -----	2	
10	ZML06001	Nut M6 x 1 -----	2	
11	ZMD06011	Screw M6 x 1*20 -----	1	
12	5100343900	Spring -----	1	
13	5100341400	Knee Lifter Shaft -----	1	
14	RE000100	Retaining Rings- E Type 10 -----	1	
15	ZMD06013	Screw M6 x 1*24 -----	2	
16	5100342000	Knee Lifter Crank -----	1	
17	5100341900	Knee Lever Rod -----	1	
18	5100345300	Rubber -----	1	
19	5100345100	Knee Plate -----	1	
20	5100345400	Knee Guird -----	1	
21	5100345200	Retainer -----	1	
22	ZMD06012	Screw M6 x 1*11.6 -----	1	
23	5100343500	Knee Press Lifter Rod Asm. -----	1	
24	FC7017-0A	Waste Material Chute Holder -----	1	
25	ZMT04003	Screw -----	3	
26	FC7018-0A	Waste Material Chute Large -----	1	
27	FC7019-0A	Waste Material Chute Small -----	1	
28	ZSB09047	Screw 9/64-40*7 -----	8	
29	ZSL09001	Nut 9/64-40 -----	8	
30	FC7016-0A	Oil Push Guide -----	1	
31	ZSB11022	Screw 11/64-40*7 -----	2	

L. ACCESSORIES (2/2)



L. ACCESSORIES (2/2)

REF.No	Part No.	Name of Part	Q'TY	Remarks
1	C7001-0A	Cover	1	
2	A7000-0A	Accessory Box	1	
3	A7010-0A	Screw Driver (small)	1	
4	A7010-1A	Screw Driver (middle)	1	
5	A7010-2A	Screw Driver (large)	1	
6	5100183200	Bobbin	1	
7	INDBX1-14	Needle DB x 1-14	4	
8	A7011-0A	Nail	8	
9	5100911700	Head Hinge	2	
10	5100911900	Rubber Hinge	2	
11	5100911500	Vibration Preventing Rubber	2	
12	5100911600	Vibration Preventing Rubber	2	
13	5100119000	Head Rest Wood	1	
14	TLA020	Hexagonal Wrench Key (2mm)	1	
15	A7012-0A	Oil Can	1	
16	EJ4108-0A	Magnet	1	
17	5100335100	Belt Cover A	1	
18	ZSE20001	Screw 5/16-24*16	2	
19	5100335200	Cover	1	
20	WA059005	Washer	1	
21	ZSB12002	Screw 3/16-28*12	1	
22	5100335300	Belt Cover Stud	1	
23	5100335800	Belt Cover B	1	
24	5100335905	Belt Cover Asm.	1	
25	ZMT04003	Screw	2	
26	WA049005	Washer	2	
27	5100320105	Bobbin Winder	1	
28	WA049005	Washer	2	
29	ZMT04003	Screw	2	
30	J7050-0A	Thread Stand	1	
31	FC4085-1A	Waste Material Guide	1	
32	FC4086-0A	Plate Cover	1	
33	FC4087-0A	Slide Plate Spring	1	
34	ZSB08045	Screw 1/8-44*2.5	1	